


勇于创新 精益求精

 **浙江精功科技股份有限公司**
ZHEJIANG JINGGONG SCIENCE & TECHNOLOGY CO.,LTD.

地址(ADD): 浙江省绍兴市柯桥区鉴湖路1809号(312030)


#1809,Jianhu road, Keqiao area,Shaoxing city, zhejiang province

China (P.C) : 312030

电话(TEL): 0575-8406 9126 / 8406 9075 传真(FAX): 0575-8406 8000

E-mail: jgf@jgtec.com.cn

最终解释权归本公司所有
The right of final interpretation is owned by our company

 **精功科技**
JINGGONG SCIENCE & TECHNOLOGY

精大EXCELL®



JGT TYPE TEXTURIZING MACHINE

JGT系列假捻变形机

High Speed Stretch Yarn Machine for polyester
高速弹力丝机 (涤纶机)



www.jgtec.com.cn



Company Profile

公司简介

浙江精工科技股份有限公司是一家以生产制造纺织机械, 新能源机械, 建材机械, 工业机器人, 碳纤维装备为主的上市公司。

股票代码: 002006, 股票简称: 精工科技。

精工科技下属纺织机械分公司, 是中国纺织机械器材工业协会常务理事单位, 主要生产 JGR 系列转杯纺纱机、JGT 系列假捻变形机、HKV141 系列氨纶包覆丝机、HKV101 系列络筒机、HKV151 系列花式捻线机、JGW 系列精密络筒机等产品, 产品遍布全国各地, 出口全球众多国家。

Zhejiang jingtong science&technology Co.,Ltd is a production manufacturing textile machinery, new energy machinery, building materials machinery, special vehicles of listed company.

STOCK CODE:002006, STOCK ABBREVIATION: JINGGONG SCIENCE&TECHNOLOGY

The textile machinery branch of jingtong science&technology is Chinese textile machinery equipment industry association executive director unit, mainly produce JGR series rotor spinning machine, JGT series texturizing machine, HKV141 series spandex covering machine, HKV101 series winding machine, HKV151 series fancy yarn twisting machine, JGW series precision rewinding machine and other products, products sales all over the country and exported to many countries.

Never Stop Striving for the Better
Technology for the Future

勇于创新 精益求精

JGT系列假捻变形机 JGT Type Texturizing Machine

- 1-JGT1000V/VH**
- 2-JGT1000M**
- 3-JGT1000MF**

该机主要是将POY原丝(聚酯预取向丝), 通过拉伸和假捻变形加工成具有低弹性能的假捻变形丝(DTY涤纶弹力丝), 若在设备上选择增加网络部件还可以进行网络丝的加工。

This machine mainly use is the POY yarn(polyester silk) is through stretching and false twisting deformation, processed into low elastic or high elastic deformation of the false twisting silk (DTY stretch yarn), The equipment can be option to add the network components, so it can undertake network yarn processing.

- 4-JGT1000D**
- 5-JGT1000E**

该机主要是将POY原丝(聚酯预取向丝), 通过拉伸和假捻变形加工成具有低弹性能的假捻变形丝(DTY涤纶弹力丝), 加工时在每个锭位将S捻和Z捻的双丝合股直接一步加工成无剩余扭矩丝, 相对于单锭生产后合股, 该机产量增加一倍。

The machine is mainly use POY yarn ,through stretching and false twisting deformation, processed into a low false twist textured yarn (DTY),every spindle can produce Stwist and Ztwist, the S yarn and the Z yarn can be completed directly by one spindle.

- 6-JGT1000X**
- 7-JGT1000H**

该机主要是将POY原丝(聚酯预取向丝), 通过拉伸和假捻变形加工成具有低弹性能的假捻变形丝(DTY涤纶弹力丝), 同时在机器上直接将氨纶丝与DTY丝复合, 通过网络喷嘴, 实现加弹与氨纶网络一步加工。

The machine mainly processes POY raw yarn (polyester yarn) into DTY polyester stretch yarn (DTY polyester stretch yarn) with low elasticity through stretching and false twist deformation. At the same time, polyurethane fiber and DTY yarn are directly combined on the machine. Through the nozzle, one-step processing of spandex-polyester air covering is realized.

- 8-JGT1000W**

该机主要是将POY原丝(聚酯预取向丝), 通过拉伸和假捻变形加工成具有低弹性能的假捻变形丝(DTY涤纶弹力丝), 也可以加工时把两个锭位将S捻和Z捻的双丝合股直接一步加工成无剩余扭矩丝, 可以生产单丝或者生产合股丝, 该机产量翻倍, 效率翻番。

This machine mainly processes POY (polyester orientation, through tensile and elastic energy in false twist deformation processed into a low false twist textured yarn (DTY polyester stretch yarn), and can also process the two spindle S twist and Z twist of double yarn twisted step into no residual torque yarn directly, can produce monofilament or twisted yarn production, the machine production is doubled, and double efficiency.





JGT1000V/VH

设备用途

Equipment use

V型机主要是将POY原丝（聚酯预取向丝），通过拉伸和假捻变形加工成具有低弹性能的假捻变形丝（DTY涤纶弹力丝），若在设备上选择增加网络部件还可以进行网络丝的加工。

This machine mainly use is the POY yarn(polyester silk) is through stretching and false twisting deformation, processed into low elastic or high elastic deformation of the false twisting silk (DTY stretch yarn), The equipment can be option to add the network cponents, so it can undertake network yarn processing.

VH型机主要加工仿棉丝和海岛丝等特种丝。

VH machine mainly processing imitation cotton silk and island silk and other special silk.

主要技术参数

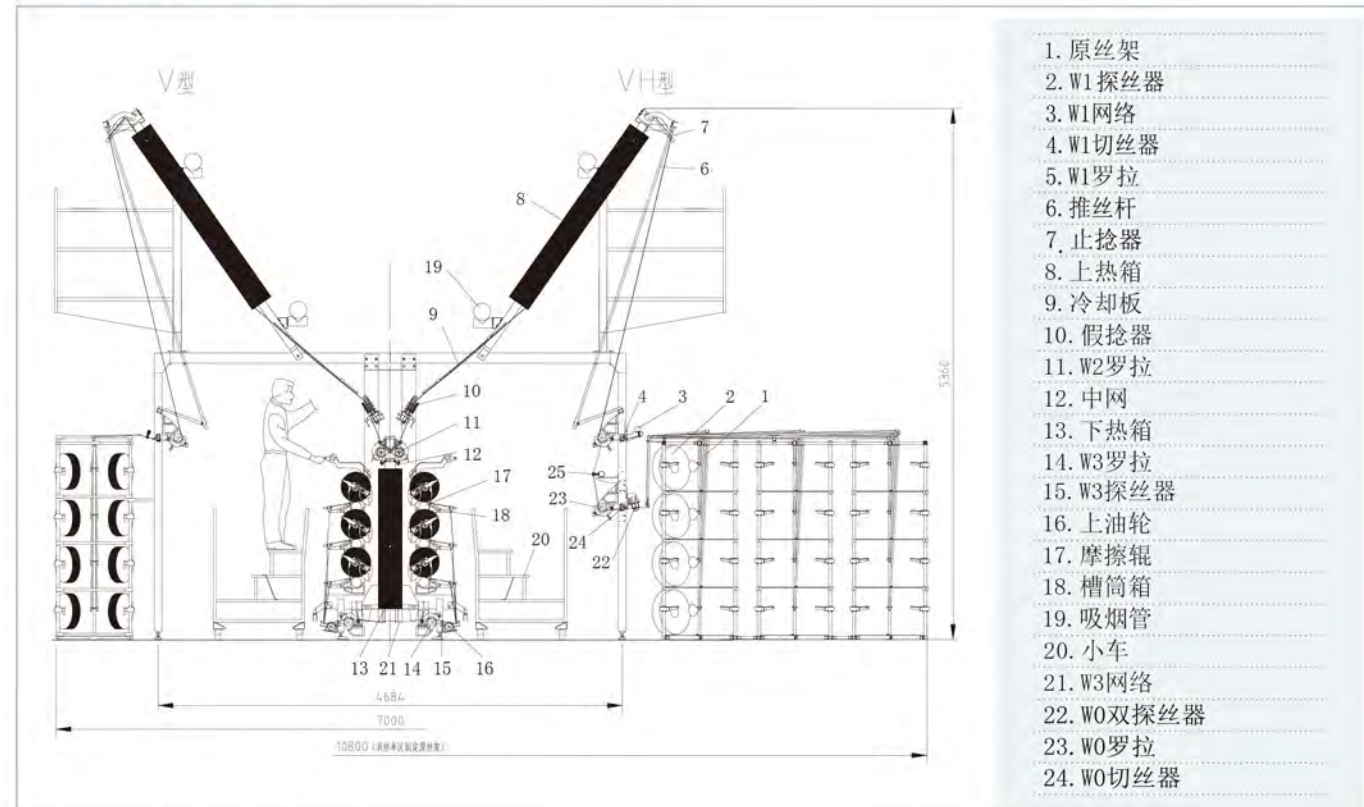
The Main Technical Parameters

锭数 Spindle	264锭 Spindles	288锭 Spindles	312锭 Spindles	336锭 Spindles	360锭 Spindles	384锭 Spindles	
节数 Section	11	12	13	14	15	16	
锭距 Spindle Pitch	110mm						
最高机械速度 Highest Mechanical Speed	1000m/min						
适纺原料及纤度 Raw Material and Fibre Number	聚酯55-222Dtex(50- 200Denier) / Polyester 55-222dtx (50 - 200Denier)						
节距 Section Size	1440mm						
假捻方式 False twist way	叠盘式VIII型假捻器摩擦假捻 / Folding disc 8 type false twister, friction false twisting						
假捻装置最高转速 The highest speed of false twist device	18000 r/min						
假捻方向 False twist direction	S, Z可调 / S, Z adjustable						
第一热箱（变形） The first heat box (distortion)	联苯气相加热 / Biphenyl gas phase heating/2000mm						
第二热箱（定型） The second heat box (figuration)	联苯气相加热 / Biphenyl gas phase heating/2000mm						
变形热箱温度范围 Deformation heat box temperature range	160-250°C						
定型热箱温度范围 Figuration heat box temperature rang	160-250°C(低温联苯为Low temperature biphenyl as100-160°C)						
冷却方式及长度 Cooling mode and length	冷却板自然冷却 / Cooling plate to cool naturally/1100mm						
摩擦棍直径 Friction roller diameter	Φ100mm						
罗拉直径 Roller diameter	Φ75mm						
上油罗拉直径 oiling roller diameter	Φ75mm						
原丝最大尺寸 Largest original yarn size	Φ435×250mm						
最大卷装尺寸 Maximum take-up size	Φ250×250mm						
卷装标准重量 Standard take-up capacity weight	5kg						
卷取纸管规格 Take-uppaper pipe specifications	Φ69×Φ57×290mm						
装机功率分类 Total power	传动 Drive	107.5kw	110.5kw	122.3kw	131kw	131kw	134kw
	上热箱 Up heat box	74.8kw	81.6kw	88.4kw	95.2kw	102kw	108.8kw
	下热箱 Below heat box	26.4kw	28.8kw	31.2kw	33.6kw	36kw	38.4kw
	辅助功率 Assist power	约 about 6kw					
总功率 Total power	214.7kw	226.9kw	247.9kw	265.8kw	275kw	287.2kw	
外形尺寸（配固定原丝架） Dimension (fixed the original holder)	20440×7000×5360mm	21880×7000×5360mm	23320×7000×5360mm	24760×7000×5360mm	26200×7000×5360mm	27640×7000×5360mm	

外形尺寸示意图及安装地脚图

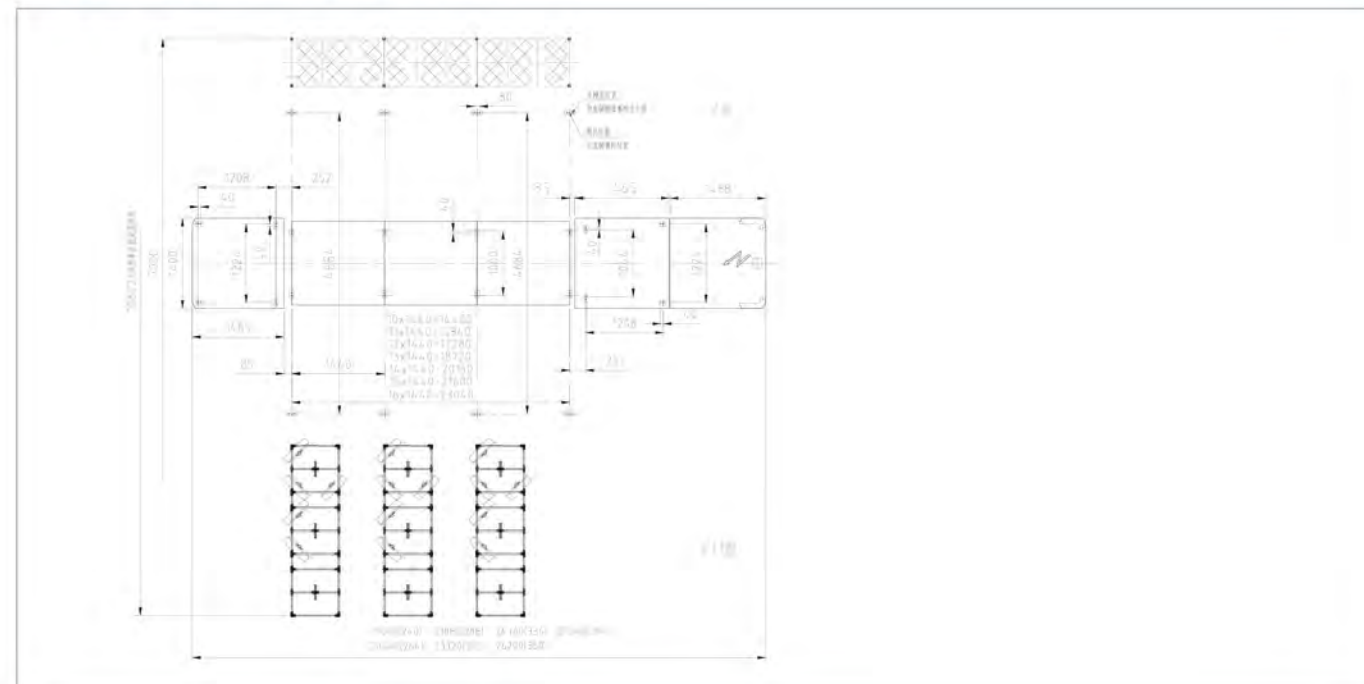
Dimension and the foundation drawing of pouring requirements

外形尺寸示意图 Dimension



*** 定制机型总高度有5020mm和4840mm两种机型

安装地脚图 Install the anchor figure



设备主要部件性能与特点 Equipment performance and characteristics of main components

热箱 Heat box

整机共配备两道热箱，第一热箱（节能型变形热箱）和第二热箱（定型热箱）均采用联苯气相加热法，温控屏显精度为 $\pm 1^\circ\text{C}$ ，并且具有超温报警自切原丝功能，进一步确保染色的均匀性，有效确保纱线品质。

The machine is equipped with two ways of heat box, the first heat box (Deformation heat box) and the second hot box (Figuration heat box) is using biphenyl gas phase heating, closed structure, it increase the internal heat preservation methods, use PLC control heating and temperature control, temperature control precision is $\pm 1^\circ\text{C}$, effectively ensure the yarn quality, it is more advantageous to dyeing and keeping more uniformity.

电器控制系统 Electric control and drive system

1-采用PLC控制系统，整机通过人机交流实现工艺调整，触摸屏显示及操作使得工艺设定简单化，同时可预设网络接口，根据用户的需要可以进行多机联网管理；同时根据用户需要可以进行手机“APP”软件管理（定制）。

2-采用优质的电器元器件，确保设备在使用过程中运行更为稳定、可靠。

1-PLC control system, the machine through man and machine communication, to realizes process adjustment. The touch screen and operation made the process set simply and easily, so it is easy to understand, using the network interface can according to the needs of the users, people can do more machine networking management.

2-Use the high quality of electrical components, to ensure that equipment in use process operation more reliable, more stable.

传动系统 Drive system

全新的结构设计及控制模式，采用单轴单电机直接传动，取消了同步带及涨紧轮，减少传动步骤，提高传动效率，降低故障率。

A/B两面可以相对独立运行，工艺可以分别调整设置，在同一设备中同时可以加工两种不同的品种，提高了设备利用率，实现一机多用化。

The new structure design and control mode, the single roller, single motor drive directly, canceled synchronous belt, reduce the transmission chain length, improve the transmission efficiency, on both sides of the machine can be relatively independent operation, on a left process can be adjusted respectively set, in the same equipment, processing can be two different original silk and yarn, and improve the equipment utilization, realize the multi-usage.

假捻器 False twister

采用叠盘式VIII型假捻器，可选择单龙带或双龙带传动方式，安装陶瓷导入盘和刀口导出盘，配置范围1-4-1至1-7-1可选。

The fold type disc VIII false twist device, can choose ChanLong belt or ssangyong belt transmission mode, import ceramic plate and blade export plate installation, configuration optional scope of the 1-4-1-1-4-1



罗拉 Roller

W1/W2/W3罗拉均采用皮辊式结构，铝合金皮辊架，压力均匀，其中W2带有分丝辊。
W1 / W2, W3 roller adopts the roller type structure, aluminum alloy roller frame, uniform pressure, the W2 with yarn roller.



卷取成形 Take-up forming

高速卷绕成形系统，带动程修正，成形优良，易于高速退绕，定重定长，最大卷装容量可达6kg。

High speed winding shaping system, forming good, easy to unwinding, the biggest capacity can be processing to 6kg.



探丝器、切丝器 Yarn explore device yarn shred device

通过探丝器检测纱线状态，检测到纱线断头，切丝器直接将喂入原丝切除，减少原丝浪费。
Through the inspection of yarn state, if the yarn is breaking or winding uglily, yarn shred device cut the feeding original yarn directly, reduce the waste of yarn.



上油装置 Oil device

沟槽式上油轮，上油量均匀，AB面独立，采用变频无级调速，客户可任意调整，满足不同工艺生产的需求。

The groove oiling tankers, oil amount even, use inverter for adjusting speed, the customer can arbitrarily regulate and meet the requirements of production.



吸油烟系统 Smoke system

安装上下两排吸油烟管道，在生产过程中，能将纱线通过热箱后所产生的油烟有效吸除，确保车间环境及设备的清洁。

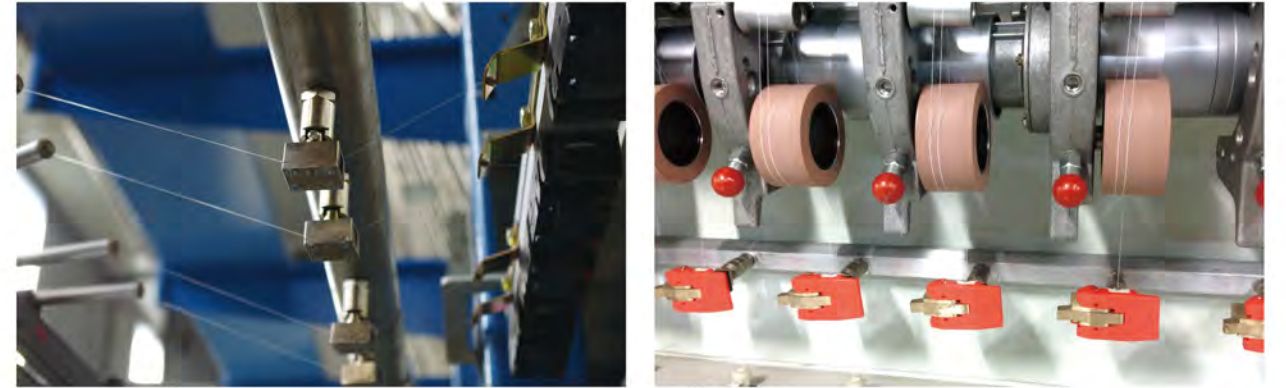
Two suction installation lampblack pipeline, the system can clear the yarn fume while processing, ensure the environment more cleaner.



选择安装部件 (不属标准配置, 由客户选择安装)

Choose to install components (not standard configuration, choose to install by the customer)

预网、中网系统 Preparation interlaced, middle interlaced



在线张力系统 On-line tension system



设备安装及使用条件 Equipment installation conditions

- 1、安装设备的地基需采用钢筋混凝土结构浇注，要有足够的地面负载能力，浇注厚度不得小于20cm；
- 2、地坪水平度，纵向高低不得大于2cm，横向高低不得大于1cm；
- 3、电源：380V±10%，三相五线制（3×380V/N/PE），频率：50Hz±1Hz，具有良好的接地系统。
- 4、压缩空气：常压露点≤-25℃，操作压力≥0.6Mpa，杂质颗粒<0.2μm，残留油<0.1ppm；
- 5、使用环境：温度25℃±2℃，相对湿度65%±5%。

- 1, The foundations of the installation of the equipment shall be reinforced concrete structure pouring, and have enough load capacity, pouring thickness is not less than 20cm.
- 2, Levelness of the floor and vertical height should not be more than 2cm, horizontal discretion should not be more than 1cm.
- 3, Power: 380V±10%, three-phase-five wire(3×380V/N/PE), frequency: 50Hz±1Hz, has the good grounding system.
- 4, Compressed air: atmospheric pressure≤-25℃, pressure≥0.6Mpa, impurities<0.2μm, residual oil<0.1ppm.
- 5, Using the environment: temperature 25℃±2℃, relative humidity of 65%±5%.



设备用途

Equipment use

该机主要是将POY原丝（聚酯预取向丝），通过拉伸和假捻变形加工成具有低弹性能的假捻变形丝（DTY涤纶弹力丝），若在设备上选择增加网络部件还可以进行网络丝的加工。

This machine mainly use is the POY yarn(polyester silk) is through stretching and false twisting deformation, processed into low elastic or high elastic deformation of the false twisting silk (DTY stretch yarn), The equipment can be option to add the network cponents, so it can undertake network yarn processing.

JGT1000M/MF 主要技术参数

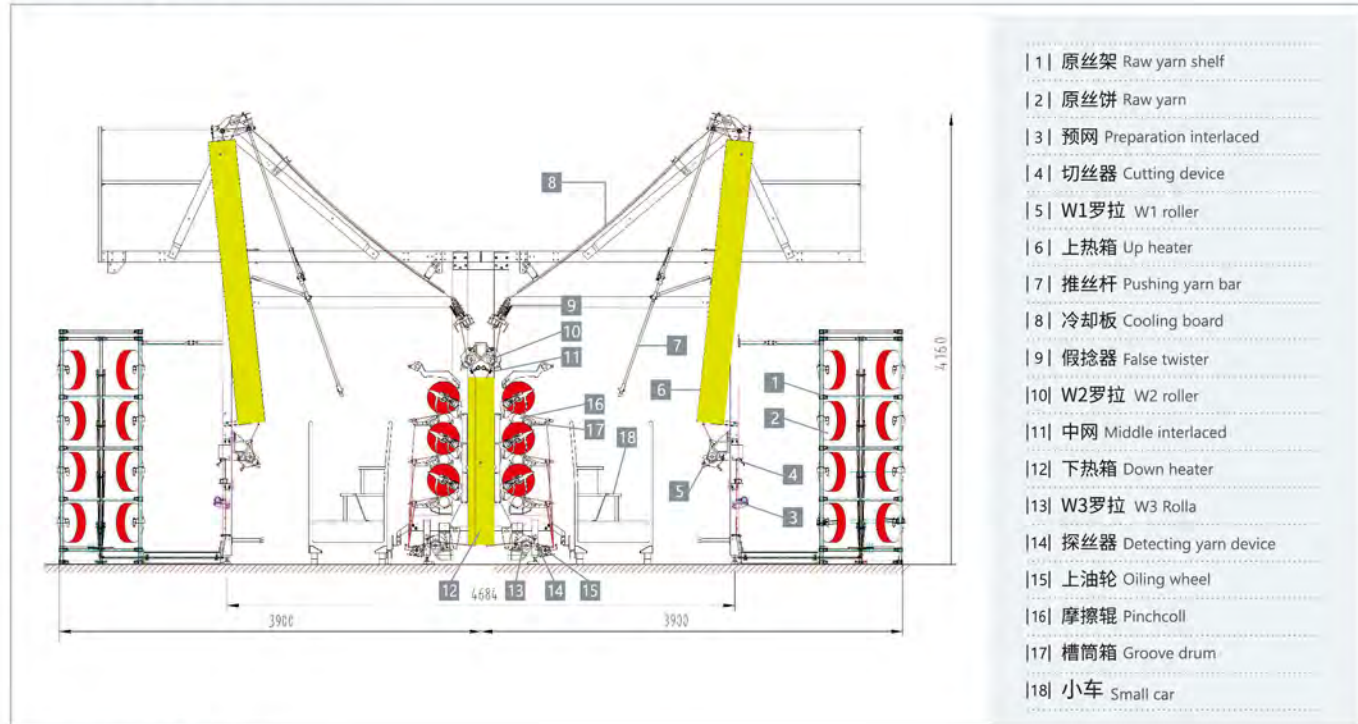
The Main Technical Parameters

锭数 Spindle	240锭 Spindles	264锭 Spindles	288锭 Spindles	312锭 Spindles	
节数 Section	10	11	12	13	
锭距 Spindle Pitch	110mm				
最高机械速度 Highest Mechanical Speed	1000m/min				
适纺原料及纤度 Raw Material and Fibre Number	聚酯167-333Dtex(150-300Denier) / Polyester 167-333dtex (150 - 300Denier)				
节距 Section Size	1440mm				
假捻方式 False twist way	叠盘式VIII型假捻器摩擦假捻 / Folding disc 8 type false twister, friction false twisting				
假捻装置最高转速 The highest speed of false twist device	18000 r/min				
假捻方向 False twist direction	S, Z可调 / S, Z adjustable				
M型第一热箱 (变形) The first heat box (distortion)	联苯气相加热 / Biphenyl gas phase heating/2000mm或2500mm				
F型第一热箱 (变形) The first heat box (distortion)	联苯气相加热 / Biphenyl gas phase heating/2500mm				
第二热箱 (定型) The second heat box (figuration)	联苯气相加热 / Biphenyl gas phase heating/1460mm				
变形热箱温度范围 Deformation heat box temperature range	160-250°C				
定型热箱温度范围 Figuration heat box temperature range	160-250°C				
冷却方式和长度 Cooling mode and length	冷却板自然冷却 / Cooling plate cooling/2100mm				
摩擦辊直径 Friction roller diameter	Φ100mm				
罗拉直径 Roller diameter	Φ75mm				
上油罗拉直径 oiling roller diameter	Φ75mm				
原丝最大尺寸 Largest original yarn size	Φ435×250mm				
最大卷装尺寸 Maximum take-up size	Φ250×250mm				
卷装标准重量 Standard take-up capacity weight	5kg				
卷取纸管规格 Take-up paper pipe specifications	Φ69×Φ57×290mm				
装机功率分类 Installed Power Category	传动 Drive	107.5kw	110.5kw	110.5kw	127kw
	上热箱 Up heat box	68kw/80kw	74.8kw/88kw	81.6kw/96kw	88.4kw/104kw
	下热箱 Below heat box	24kw	26.4kw	28.8kw	31.2kw
	辅助功率 Assist power	约 about 6kw			
外形尺寸 (配固定原丝架) Dimensions (with fixed original wire frame)	总功率 Total power	205.5kw/217.5kw	217.7kw/236.9kw	226.9kw/241.3kw	252.6kw/268.2kw
	M型	19000×7800×4160mm	20440×7800×4160mm	21880×7800×4160mm	23320×7800×4160mm
F型	19000×7000×4930mm	20440×7000×4930mm	21880×7000×4930mm	23320×7000×4930mm	

外形尺寸示意图及安装地脚图

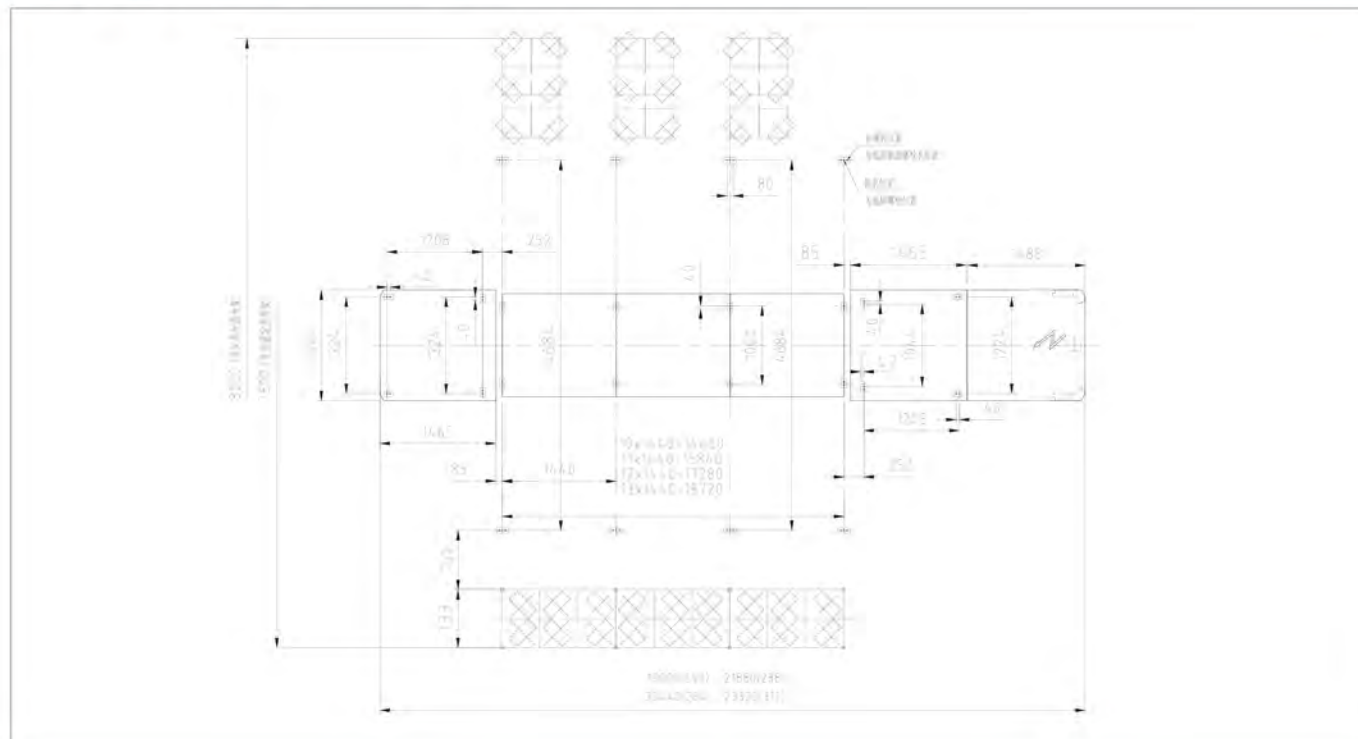
Dimension and the foundation drawing of pouring requirements

外形尺寸示意图 Dimension



*** 定制机型总高度3870mm

安装地脚图 Install the anchor figure



设备主要部件性能与特点 Equipment performance and characteristics of main components

热箱 Heat box

全新的上热箱（第一热箱）结构布置，操作高度低、丝道布置更为合理，第一热箱（节能型变形热箱）和第二热箱（定型热箱）均采用联苯气相加热法，同样具有超温报警自切原丝功能。

New hot box (the first heat box) on the structural arrangement, operating level is low, the silk road layout is more reasonable, the first heat box (deformation hot box) and the second heat box (finalize the hot box) adopt biphenyl gas heating method, also has the function of overtemperature alarm cut the original silk.

传动系统 Driving system

采用单轴单电机直接传动，减少了传动链，工艺调整更方便，维修简单。

Using single axis motor direct drive, reduced the transmission chain, process more convenient adjustment, easy maintenance.

假捻器 False twister

采用叠盘式VIII型假捻器，可选择单龙带或双龙带传动方式，安装陶瓷导入盘和刀口导出盘，配置范围1-4-1至1-7-1可选，工作盘有PU盘及软陶瓷两种规格可选。

The stacked disc of VIII type false twister, A / B with both sides of the independent Long drive, install ceramic import and knife-edge Export disk configuration range from 1-4-1 to 1-7-1 optional. Work disc has PU disc and soft ceramic two specifications optional.

罗拉 Roller

W1/W2/W3罗拉均采用皮圈式结构，铝合金皮圈架。

W1 / W2, W3 roller adopt apron type structure, aluminum alloy frame aprons.



原丝架 Raw yarn shelf

共有两种原丝架可供用户选择，固定式与旋转式两种。

There are two strands for users to choose, both stationary and rotating.





JGT1000MF

设备用途

Equipment use

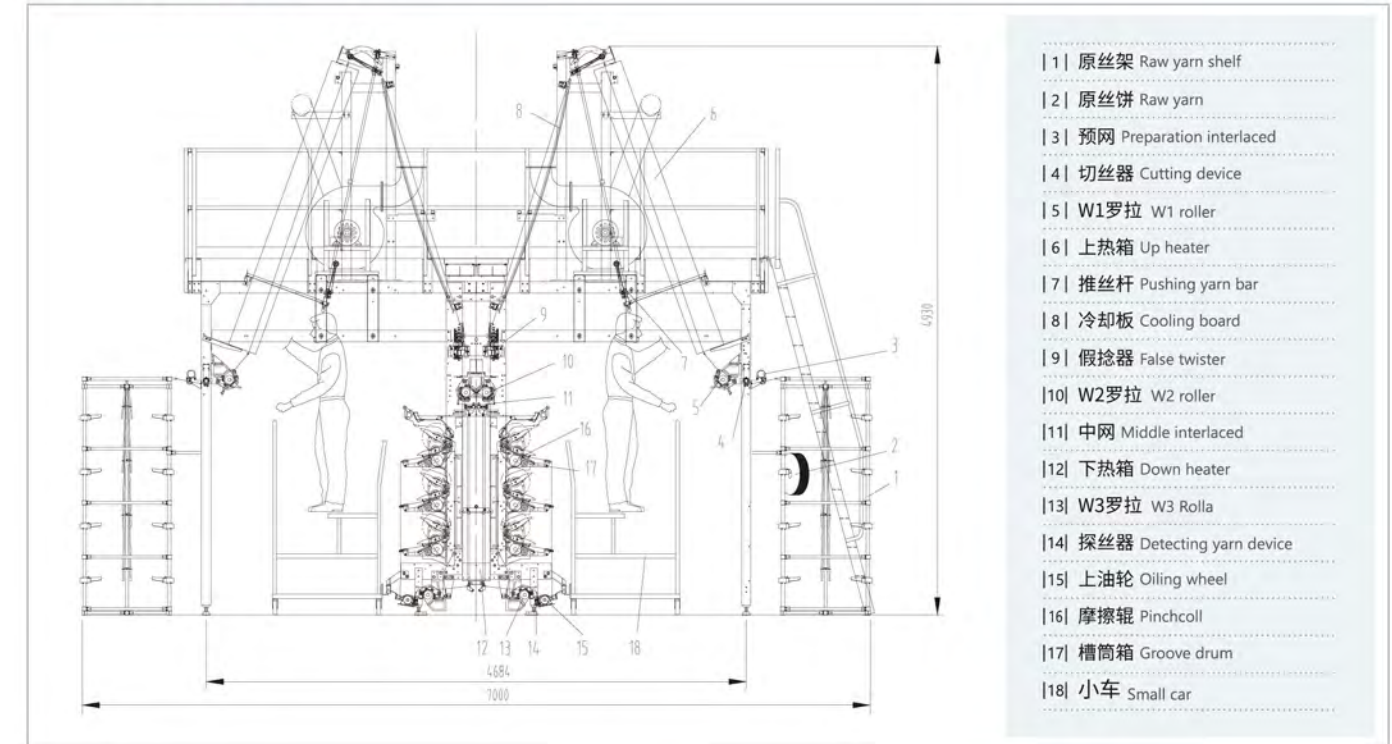
该机主要是将POY原丝（聚酯预取向丝），通过拉伸和假捻变形加工成具有低弹性能的假捻变形丝（DTY涤纶弹力丝），若在设备上选择增加网络部件还可以进行网络丝的加工。

This machine mainly use is the POY yarn(polyester silk) is through stretching and false twisting deformation, processed into low elastic or high elastic deformation of the false twisting silk (DTY stretch yarn), The equipment can be option to add the network components, so it can undertake network yarn processing.

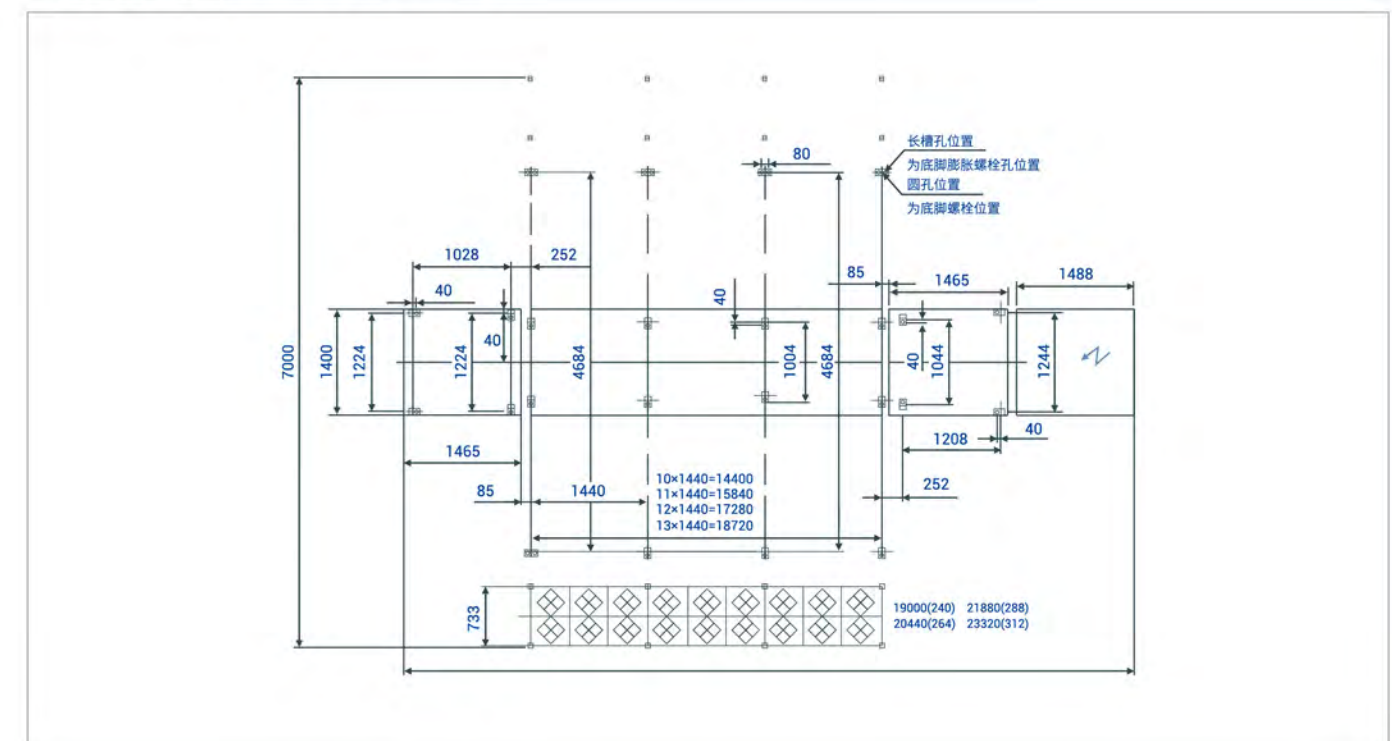
外形尺寸示意图及安装地脚图

Dimension and the foundation drawing of pouring requirements

外形尺寸示意图 Dimension



安装地脚图 Install the anchor figure





JGT1000D (双锭组)

设备用途

Equipment use

该机主要是将POY原丝（聚酯预取向丝），通过拉伸和假捻变形加工成具有低弹性能的假捻变形丝（DTY涤纶弹力丝），加工时在每个锭位将S捻和Z捻的双丝合股直接一步加工成无剩余扭矩丝，相对于单锭生产后合股，该机产量增加一倍。

The machine is mainly use POY yarn ,through stretching and false twisting deformation,processed into a low false twist textured yarn (DTY),every spindle can produce S twist and Z twist,the S yarn and the Z yarn can be completed directly by one spindle.

主要技术参数

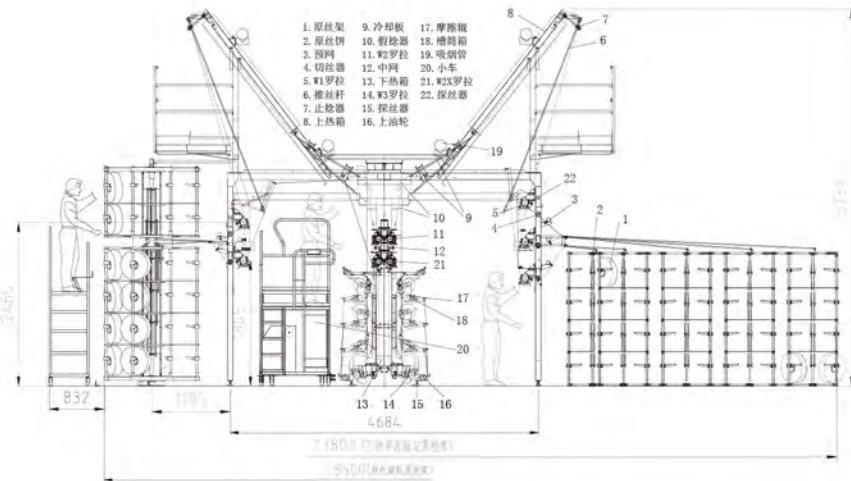
The Main Technical Parameters

锭数 Spindle	240锭 Spindles	264锭 Spindles	288锭 Spindles	312锭 Spindles	
节数 Section	10	11	12	13	
锭距 Spindle Pitch	110mm				
最高机械速度 Highest Mechanical Speed	1000m/min				
适纺原料及纤度 Raw Material and Fibre Number	聚酯55-333Dtex (50-300Denier) ×2根 / Polyester 55-333dtx (50-300denier) x 2 roots				
节距 Section Size	1440mm				
假捻方式 False twist way	双层电锭叠盘式假捻器摩擦假捻 / Double layer electric ingot tray type false twister friction false twist				
摩擦盘规格 Friction disc specifications	Φ52 (Φ52.5) X9mm				
假捻装置最高转速 The highest speed of false twist device	18000 r/min				
假捻方向 False twist direction	S捻一层+Z捻一层 / S twist one layer + Z twist one layer				
第一热箱 (变形) The first heat box (distortion)	联苯气相加热 / Biphenyl gas phase heating/2000mm				
第二热箱 (定型) The second heat box (figuration)	联苯气相加热 / Biphenyl gas phase heating/1460mm				
变形热箱温度范围 Deformation heat box temperature range	160-250°C				
定型热箱温度范围 Figuration heat box temperature range	160-250°C (低温联苯为100-160°C) / The low temperature biphenyl is 100-160°C				
冷却方式和长度 Cooling mode and length	冷却板自然冷却 / Cooling plate cooling/1100mm				
摩擦辊直径 Friction roller diameter	Φ100mm				
罗拉直径 Roller diameter	Φ75mm				
上油罗拉直径 oiling roller diameter	Φ75mm				
原丝最大尺寸 Largest original yarn size	Φ435×250mm				
最大卷装尺寸 Maximum take-up size	Φ250×250mm				
卷装标准重量 Standard take-up capacity weight	5kg				
卷取纸管规格 Take-up paper pipe specifications	Φ69×Φ57X290mm				
装机功率分类 Installed Power Category	传动 Drive	163.86kw	183.5kw	195.14kw	217.38kw
	上热箱 Up heat box	80kw	88kw	96kw	104kw
	单下热箱 Below heat box	24kw	26.4kw	28.8kw	31.2kw
	双下热箱 Below heat box	32kw	35.2kw	38.4kw	38.4kw
	辅助功率 Assist power	约 about 6kw			
配单下热箱总功率 Provide the total power of under single heat box	282.86kw	303.9kw	333.94kw	358.58kw	
外形尺寸 Dimensions	三丝单区原丝架 Assist power	19000×13800×5730mm	20440×13800×5730 mm	21880×13800×5730 mm	23320×13800×5730 mm
	旋转原丝架 Assist power	19000×8500×5730mm	20440×8500×5730 mm	21880×8500×5730 mm	23320×8500×5730 mm

外形尺寸示意图及安装地脚图

Dimension and the foundation drawing of pouring requirements

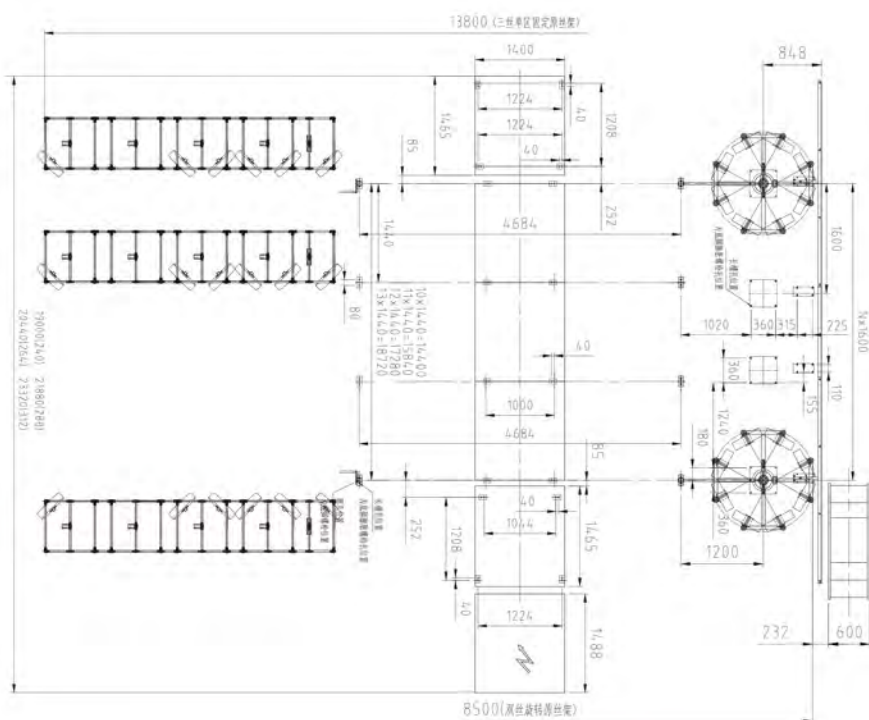
外形尺寸示意图 Dimension



- | 1| 原丝架 Raw yarn shelf
- | 2| 原丝饼 Raw yarn
- | 3| 预网 Preparation interlaced
- | 4| 切丝器 Cutting device
- | 5| W1罗拉 W1 roller
- | 6| 推丝杆 Pushing yarn bar
- | 7| 止捻器 Stop twister
- | 8| 上热箱 Up heater
- | 9| 冷却板 Cooling board
- | 10| 假捻器 False twister
- | 11| W2罗拉 W2 roller
- | 12| 中网 Middle interlaced
- | 13| 下热箱 Down heater
- | 14| W3罗拉 W3 Roller
- | 15| 探丝器 Detecting yarn device

- | 16| 上油轮 Oiling wheel
- | 17| 摩擦辊 Pinchroll
- | 18| 槽筒箱 Groove drum
- | 19| 吸烟管 Smoking tube
- | 20| 小车 Small car
- | 21| W2X罗拉 W2X Rolla
- | 22| 探丝器 Detecting yarn device

安装地脚图 Install the anchor figure



设备主要部件性能与特点 Equipment performance and characteristics of main components

电锭假捻器 Electric false twister

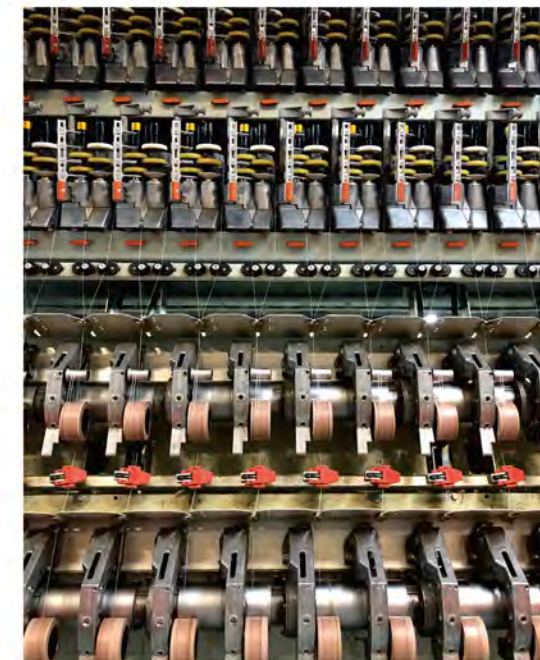
安装上下两层电锭叠盘式假捻器。

Install the top and bottom two layer electric ingot tray type false twist device.

W2x罗拉配置结构 Driving system

采用双W2罗拉结构，提高网络质量，确保成纱品质。

Adopt double W2 roller structure to improve network quality and ensure yarn quality.



可选择安装W0罗拉结构

You can choose to install the W0 roller structure

在W1罗拉下方可以根据用户需求选择安装一道或两道W0罗拉，适合三根丝或四根丝合股生产所需。

Under the W1 roller, you can choose to install a W0 roller according to the user's requirements.



探丝器 False twister

探丝器上配置有开关、纺特殊品种丝时，可随意开启和关闭探丝器，而不影响切丝器的运作

A stack of disc false twister, A/B sides independent dragon belt drive, ceramics import and export trading, installation configuration optional scope of the 1-4-1to1-7-1, work plate of A PU plate and ceramic plate two specifications are optional.



外形尺寸示意图及安装地脚图

Dimension and the foundation drawing of pouring requirements

主要技术参数 The Main Technical Parameters

锭数 Spindle	264锭 Spindles	288锭 Spindles	312锭 Spindles	
节数 Section	11	12	13	
锭距 Spindle Pitch	110mm			
最高机械速度 Highest Mechanical Speed	1000m/min			
适纺原料及纤度 Raw Material and Fibre Number	聚酯55-333dtex (50-300Denier) × 2根(推荐最高450DX2) Polyester 55-333dtex (50-300denier) x 2 roots(Recommended maximum 450DX2)			
假捻方向 False twist direction	双层电锭叠盘式VIII假捻器摩擦假捻 Double - layer electric ingot stacked disk false twist friction false twist			
第一热箱 (变形) The first heat box (distortion)	联苯气相加热2500mm / Biphenylc gas phase heating 2500mm			
冷却方式及长度 Cooling mode and length	冷却板自然冷却2100mm / The cooling plate is naturally cooled by 2100mm			
装机功率分类 Installed Power Category	传动 Drive	196kw	203.8kw	232.4kw
	上热箱 Up heat box	110kw	120kw	130kw
	下热箱 Under the hot box	26.4kw	28.8kw	31.2kw
	辅助功率 Assist power	约 about 6kw		
	总功率 Total power	332.2kw	358.6kw	399.6kw
外形尺寸 Dimensions	配固定原丝架 Fixed original frame	20440X10800X5650mm	21880X10800X5650mm	23320X10800X5650mm

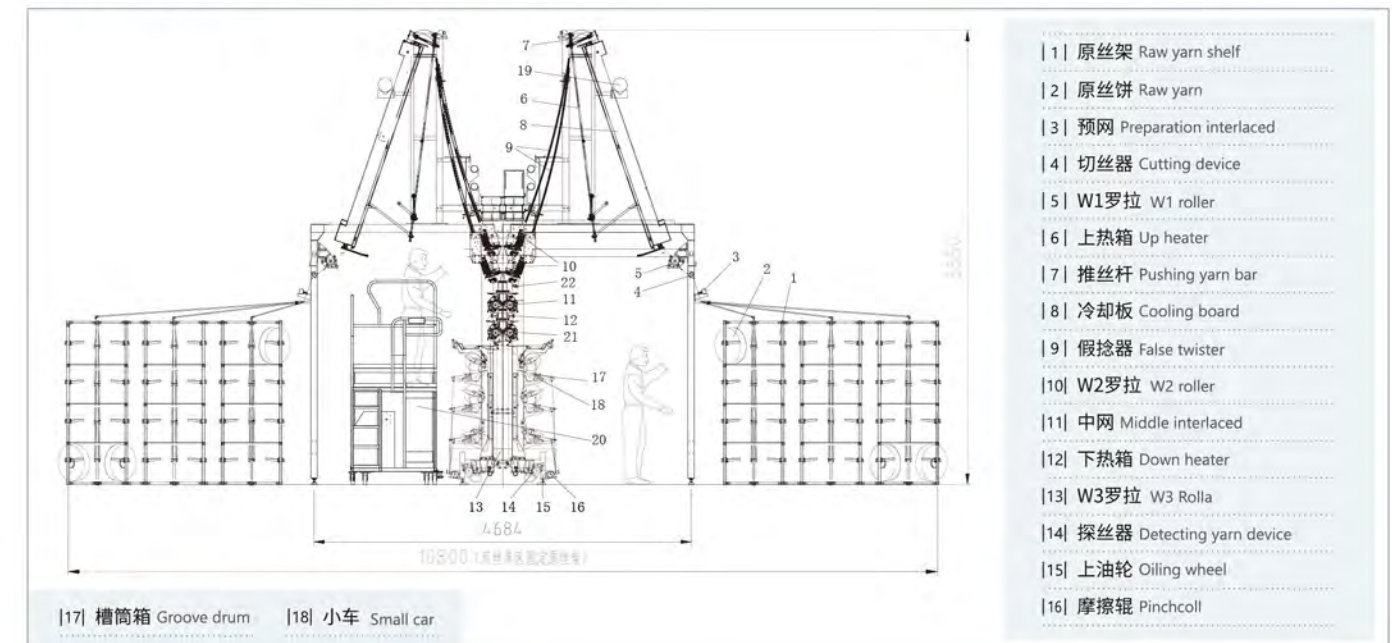
设备用途

Equipment use

该机主要是将粗旦POY原丝（聚酯预取向丝），通过拉伸和假捻变形加工成具有低弹性能的粗旦假捻变形丝（粗旦DTY涤纶弹力丝），加工时在每个锭位将S捻和Z捻的双丝合股直接一步加工成无剩余扭矩丝，相对单锭生产后合股，该机产量增加一倍。

This machine is mainly coarse denier POY filament (polyester pre-oriented filament), through stretching and false twist deformation processing into a low elastic strength of coarse denier false twist deformation filament (coarse denier DTY polyester elastic filament), processing in each spindle position S twist and Z twist double filament strands directly one step processing into no residual torque filament. Compared with single ingot production, the output of the machine is doubled.

外形尺寸示意图





JGT1000X

设备用途

Equipment use

该机主要是将POY原丝（聚酯预取向丝），通过拉伸和假捻变形加工成具有低弹性能的假捻变形丝（DTY涤纶弹力丝），同时在机器上直接将氨纶丝与DTY丝复合，通过网络喷嘴，实现加弹与氨纶网络一步加工。

The machine mainly processes POY raw yarn (polyester yarn) into DTY polyester stretch yarn (DTY polyester stretch yarn) with low elasticity through stretching and false twist deformation. At the same time, polyurethane fiber and DTY yarn are directly combined on the machine. Through the nozzle, one-step processing of spandex-polyester air covering is realized.

主要技术参数

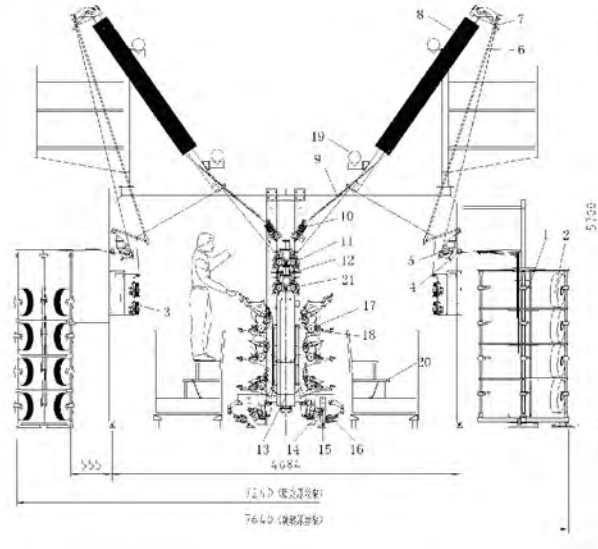
The Main Technical Parameters

锭数 Spindle	240锭 Spindles	264锭 Spindles	288锭 Spindles	312锭 Spindles	
节数 Section	10	11	12	13	
锭距 Spindle Pitch	110mm				
最高机械速度 Highest Mechanical Speed	1000m/min				
适纺原料及纤度 Raw Material and Fibre Number	聚酯55-222Dtex (50-200Denier) / Polyester 55-222dtx (50-200denier)				
节距 Section Size	1440mm				
假捻方式 False twist way	叠盘式VIII型假捻器摩擦假捻 / Folding disc 8 type false twister, friction false twisting				
假捻装置最高转速 The highest speed of false twist device	18000 r/min				
假捻方向 False twist direction	S,Z可调 / S, Z adjustable				
第一热箱（变形） The first heat box (distortion)	联苯气相加热 / Biphenyl gas phase heating/2000mm				
第二热箱（定型） The second heat box (figuration)	联苯气相加热 / Biphenyl gas phase heating/1460mm				
变形热箱温度范围 Deformation heat box temperature range	160-250°C				
定型热箱温度范围 Figuration heat box temperature range	160-250°C (低温联苯为100-160°C) / The low temperature biphenyl is 100-160°C				
冷却方式和长度 Cooling mode and length	冷却板自然冷却 / Cooling plate cooling/1100mm				
摩擦辊直径 Friction roller diameter	Φ100mm				
罗拉直径 Roller diameter	Φ75mm				
上油罗拉直径 Oiling roller diameter	Φ75mm				
氨纶喂入辊直径 Diameter of feed roller of spandex	Φ25mm				
氨纶牵伸比例范围 Stretch ratio range of spandex	1.5-4倍				
原丝最大尺寸 Maximum size of raw silk	Φ435X250mm				
最大卷装尺寸 Maximum roll size	Φ250×250mm				
卷装标准重量 Standard take-up capacity weight	5kg				
卷取纸管规格 Take-up paper pipe specifications	Φ69×Φ57×290mm				
装机功率分类 Installed Power Category	传动 Drive	114.1kw	133.06kw	133.96kw	154.54kw
	上热箱 Up heat box	68kw	74.8kw	81.6kw	88.4kw
	下热箱 Under the hot box	24kw	26.4kw	28.8kw	31.2kw
	辅助功率 Assist power	约 about 6kw			
	总功率 Total power	212.1kw	240.3kw	250.4kw	280.14kw
外形尺寸 Dimensions	固定原丝架 Fixed original frame	19000×7240×5700mm	20440×7240×5700 mm	21880×7240×5700 mm	23320×7240×5700 mm
	旋转原丝架 Assist power	19000×7640×5700mm	20440×7640×5700 mm	21880×7640×5700 mm	23320×7640×5700 mm

外形尺寸示意图及安装地脚图

Dimension and the foundation drawing of pouring requirements

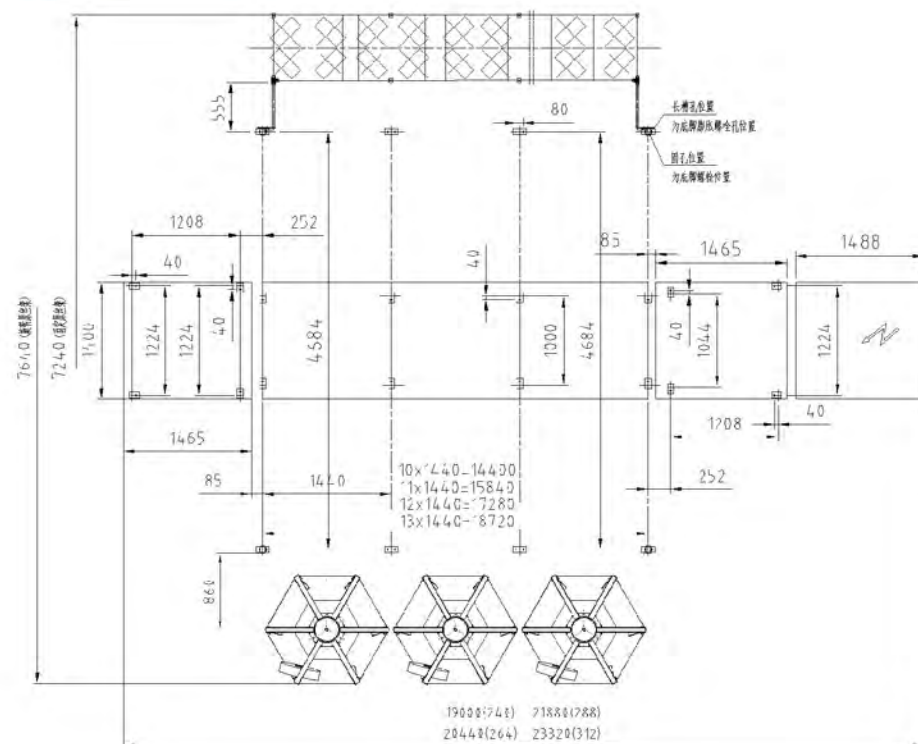
外形尺寸示意图 Dimension



- | 1| 原丝架 Raw yarn shelf
- | 2| 原丝饼 Raw yarn
- | 3| 氨纶喂入 Spandex feeding device
- | 4| 切丝器 Cutting device
- | 5| W1罗拉 W1 roller
- | 6| 推丝杆 Pushing yarn bar
- | 7| 止捻器 Stop twister
- | 8| 上热箱 Up heater
- | 9| 冷却板 Cooling board
- | 10| 假捻器 False twister
- | 11| W2罗拉 W2 roller
- | 12| 中网 Middle interlaced
- | 13| 下热箱 Downen heater
- | 14| W3罗拉 W3 Rolla

- | 15| 探丝器 Detecting yarn device
- | 16| 上油轮 Oiling wheel
- | 17| 摩擦辊 Pinchroll
- | 18| 槽筒箱 Groove drum
- | 19| 吸烟管 Smoking tube
- | 20| 小车 Small car
- | 21| W2X罗拉 W2X Rolla

安装地脚图 Install the anchor figure



设备主要部件性能与特点 Equipment performance and characteristics of main components

氨纶喂入装置 Spandex feeding system >

氨纶喂入装置采用单锭独立电机传动，每个氨纶丝由独立电机带动，AB面装置可独立控制，确保氨纶送丝稳定，牵伸均匀。

separate motor drive every spandex feeding device, separate contrlling for side A and side B, thus spandex feeding more steady and uniformity



W2X结构 W2X structure v

采用双W2罗拉结构，提高网络质量，确保成纱品质。

Adopting double W2 roller, it can increase the yarn quality and intermingle quality.

共有两种原丝架可供用户选择，固定式与旋转式两种。

There are two strands for user to choose, stationary yarn frame and rotating frame





设备用途

Equipment use

该机主要是将POY原丝（聚酯预取向丝），通过拉伸和假捻变形加工成具有低弹性能的假捻变形丝（DTY涤纶弹力丝），同时在机器上直接将氨纶丝与DTY丝复合，通过网络喷嘴，实现加弹与氨纶网络一步加工。

The machine mainly processes POY raw yarn (polyester preoriented yarn) into DTY polyester stretch yarn (DTY polyester stretch yarn) with low elasticity through stretching and false twist deformation. At the same time, polyurethane fiber and DTY yarn are directly combined on the machine. Through the air nozzle, one-step processing of spandex-polyester air covering is realized.

主要技术参数

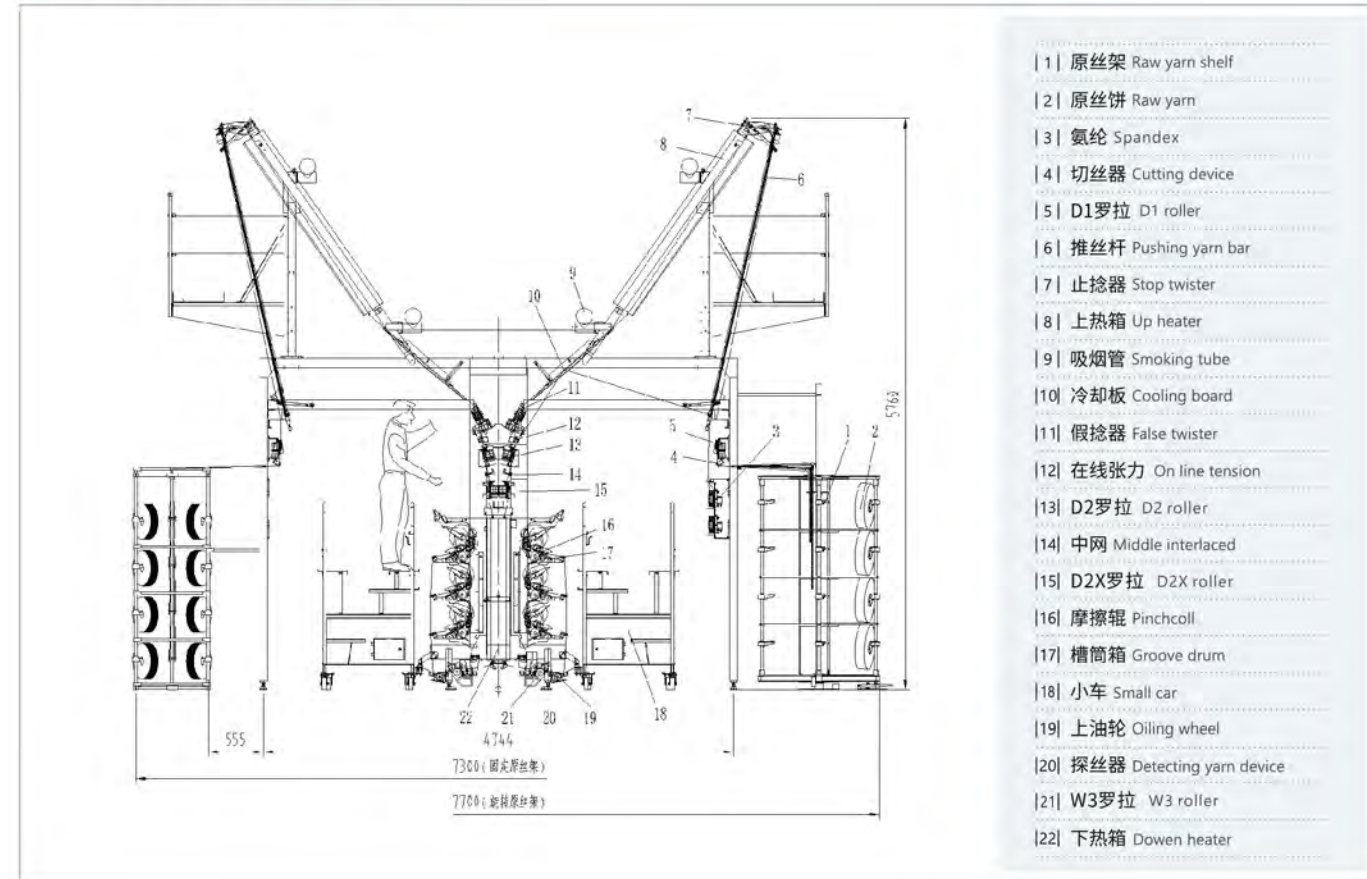
The Main Technical Parameters

锭数 Spindle	264锭 Spindles	288锭 Spindles	312锭 Spindles	336锭 Spindles	360锭 Spindles	384锭 Spindles	
节数 Section	11	12	13	14	15	16	
锭距 Spindle Pitch	110mm						
最高机械速度 Highest Mechanical Speed	1000m/min						
适纺原料及纤度 Raw Material and Fibre Number	聚酯55-222Dtex (50-200Denier) / Polyester 55-222dtx (50-200denier)						
节距 Section Size	1440mm						
假捻方式 False twist way	叠盘式VIII型假捻器摩擦假捻 / Folding disc 8 type false twister,friction false twisting						
摩擦盘规格 Friction disc specifications	Φ52(Φ52.5)X9mm						
假捻装置最高转速 The highest speed of false twist device	18000 r/min						
假捻方向 False twist direction	S,Z可调 / S, Z adjustable						
第一热箱 (变形) The first heat box (distortion)	联苯气相加热2000mm / Biphenyl gas phase heating/2000mm						
第二热箱 (定型) The second heat box (figuration)	联苯气相加热1460mm / Biphenyl gas phase heating/1460mm						
变形热箱温度范围 Deformation heat box temperature range	160-250°C						
定型热箱温度范围 Figuration heat box temperature range	160-250°C (低温联苯为100-160°C) / Low temperature coupling is 100-160°C						
冷却方式和长度 Cooling mode and length	冷却板自然冷却1100mm / Natural cooling of the cooling plate is 1100mm						
摩擦辊直径 The friction roller diameter	Φ100mm						
罗拉直径 Roller diameter	Φ75mm						
上油罗拉直径 Oiling roller diameter	Φ75mm						
氨纶喂入辊直径 Diameter of feed roller of spandex	Φ25mm						
氨纶牵伸比例范围 strech ratio range of spandex	1.5-4倍						
原丝最大尺寸 Maximum size of raw silk	Φ435X250mm						
最大卷装尺寸 Maximum roll size	Φ250×250mm						
卷装标准重量 Standard take-up capacity weight	5kg						
卷取纸管规格 Take-up paper pipe specifications	Φ69×Φ57×290mm						
装机功率分类 Installed Power Category	传动 Drive	126.2kw	130.1kw	145.7kw	158.3kw	162kw	166kw
	上热箱 Up heat box	74.8kw	81.6kw	88.4kw	95.2kw	102kw	108.8kw
	下热箱 Under the dual hot box	26.4kw	28.8kw	31.2kw	33.6kw	36kw	38.4kw
	辅助功率 Assist power	约 about 6kw					
外形尺寸 Dimensions	总功率 Total power	233.4kw	246.5kw	271.3kw	293kw	306kw	319kw
	固定原丝架 Fixed original frame	20440×7300 ×5760mm	21880×7300 ×5760mm	23320×7300 ×5760mm	24760×7300 ×5760mm	26200×7300 ×5760mm	27640×7300 ×5760mm
	旋转原丝架 Assist power	20440×7700 ×5760mm	21880×7700 ×5760mm	23320×7700 ×5760mm	24760×7700 ×5760mm	26200×7700 ×5760mm	27640×7700 ×5760mm

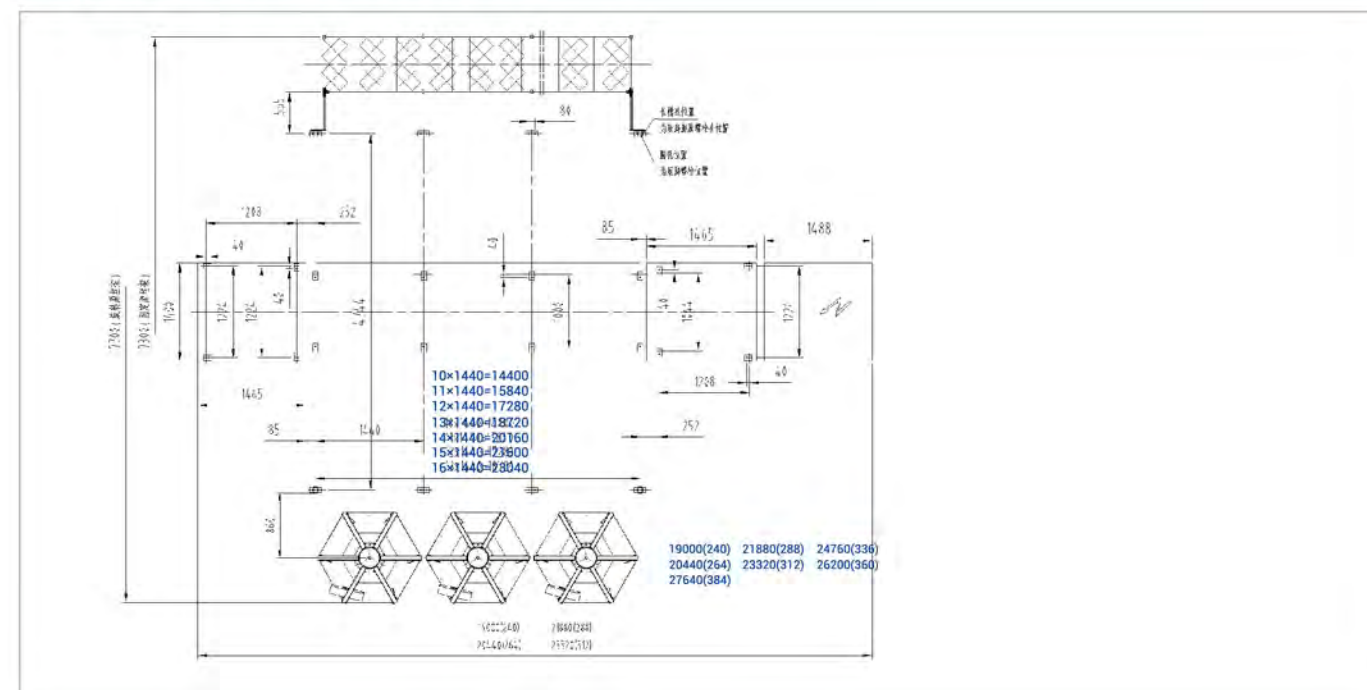
外形尺寸示意图及安装地脚图

Dimension and the foundation drawing of pouring requirements

外形尺寸示意图 Dimension



安装地脚图 Install the anchor figure



设备主要部件性能与特点 Equipment performance and characteristics of main components

氨纶喂入装置 (选择配置)

Feeding device of spandex

氨纶喂入装置采用单锭独立主动退绕装置, 每个氨纶丝由独立电机带动, A/B面装置可独立控制, 确保氨纶送丝稳定, 牵伸均匀。配有氨纶探丝器与涤纶探切丝联动系统, 相对应的氨纶与涤纶有断纱, 对应的氨纶主动退绕装置就停转。

Polyurethane feeding device adopts single ingot independent active unwinding device. Each polyurethane yarn is driven by an independent motor, and A/B surface device can be independently controlled to ensure stable polyurethane yarn feeding and uniform drafting. The system is equipped with a polyurethane thread detector and a polyurethane thread detection system.

探切丝器 Sensor cutter

通过探丝器检测纱线状态, 检测到纱线断头, 切丝器直接将喂入原丝切除并握持住, 然后指示灯亮起, 从而减少废品丝的浪费, 提高效率。

The yarn break was detected by the yarn probe. The cutter directly fed the original yarn and held it, and then the indicator light was turned on, so as to reduce waste of waste silk and improve efficiency.



牵伸盘罗拉D2x结构

Draft disc roller D2x structure

当生产细旦多孔丝时, 它能够确保高质量保持长丝始终均匀, 对摩擦敏感的长丝产品如全消光或有色长丝的生产, 通常磨损部件的速度很快, 之所以可以高效、低成本生产, 就是因为牵伸盘和长丝之间无相对滑动。

采用双D2牵伸盘罗拉结构, 每个锭位罗拉由单锭独立电机带动, 提高网络质量, 确保成纱品质。

When producing fine porous filaments, it can ensure high quality and uniform filaments. The production of friction-sensitive filament products, such as full dulling or colored filaments, usually wears the parts quickly. The reason for efficient and low-cost production is that there is no relative sliding between the drafting disc and filament.

Adopt double D2 draft disc roller structure, each ingot roller is driven by single ingot independent motor, improve network quality and ensure yarn quality.

采用气动伸丝杆, 上丝更稳定, 减少挡车工劳动强度。

The use of pneumatic extension rod, yarn connecting more stable, reduce the intensity of labor.





设备用途

Equipment use

该机主要是将POY原丝（聚酯预取向丝），通过拉伸和假捻变形加工成具有低弹性能的假捻变形丝（DTY涤纶弹力丝），也可以加工时把两个锭位将S捻和Z捻的双丝合股直接一步加工成无剩余扭矩丝，可以生产单丝或者生产合股丝，该机产量翻倍，效率翻番。

This machine mainly processes POY (polyester orientation, through tensile and elastic energy in false twist deformation processed into a low false twist textured yarn (DTY polyester stretch yarn), and can also process the two spindle S twist and Z twist of double yarn twisted step into no residual torque yarn directly, can produce monofilament or twisted yarn production, the machine production is doubled, and double efficiency.

主要技术参数

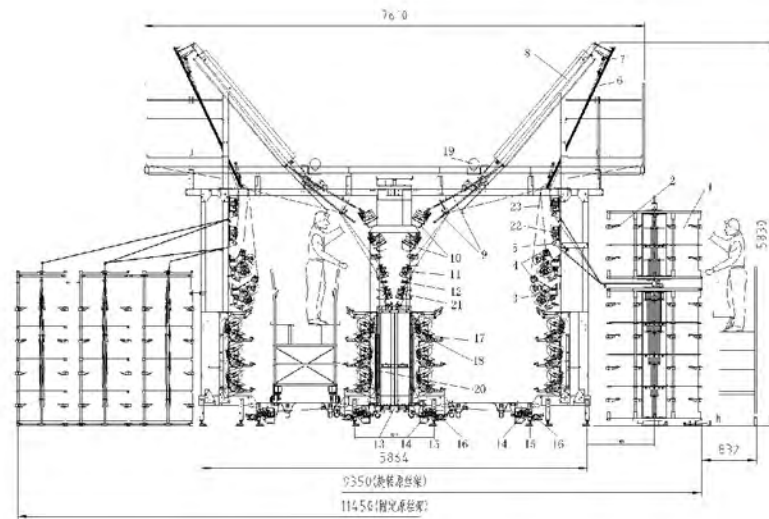
The Main Technical Parameters

锭数 Spindle	480锭 Spindles	528锭 Spindles	576锭 Spindles	624锭 Spindles	
节数 Section	10	11	12	13	
锭距 Spindle Pitch	110mm				
最高机械速度 Highest Mechanical Speed	1000m/min				
适纺原料及纤度 Raw Material and Fibre Number	聚酯55-333Dtex (50-300Denier) X2根 / Polyester 55-333dtex (50-300denier) x 2 roots				
节距 Section Size	1440mm				
假捻方式 False twist way	电锭叠盘式假捻器摩擦假捻 / Electric ingot tray type false twister friction false twist				
摩擦盘规格 Friction disc specifications	Φ52(Φ52.5)X9mm				
假捻装置最高转速 The highest speed of false twist device	18000 r/min				
假捻方向 False twist direction	S捻/Z捻S S /twist/Z twist				
第一热箱（变形） The first heat box (distortion)	联苯气相加热 / Biphenyl gas phase heating/2000mm				
第二热箱（定型） The second heat box (figuration)	联苯气相加热 / Biphenyl gas phase heating/1460mm				
变形热箱温度范围 Deformation heat box temperature range	160-250°C				
定型热箱温度范围 Figuration heat box temperature range	160-250°C (低温联苯为100-160°C) / Low temperature coupling is 100-160°C				
冷却方式和长度 Cooling mode and length	冷却板自然冷却 / Cooling plate cooling/1100mm				
摩擦辊直径 The friction roller diameter	Φ100mm				
罗拉直径 Roller diameter	Φ60mm				
上油罗拉直径 Oiling roller diameter	Φ75mm				
原丝最大尺寸 Maximum size of raw silk	Φ435X250mm				
最大卷装尺寸 Maximum roll size	Φ250×250mm				
卷装标准重量 Standard take-up capacity weight	5kg				
卷取纸管规格 Take-up paper pipe specifications	Φ69×Φ57×290mm				
装机功率分类 Installed Power Category	传动 Drive	224.8kw	243.2kw	255.7kw	277.8kw
	上热箱 Up heat box	80kw	88kw	96kw	104kw
	双下热箱 Under the dual hot box	48kw	52.8kw	57.6kw	62.4kw
	辅助功率 Assist power	约 about 6kw			
	总功率 total power	358.8kw	390kw	415.3kw	450.2kw
外形尺寸 Dimensions	固定原丝架 Fixed original frame	19000×11450×5830mm	20440×11450×5830 mm	21880×11450×5830 mm	23320×11450×5830 mm
	旋转原丝架 Assist power	19000×9350×5830mm	20440×9350×5830 mm	21880×9350×5830 mm	23320×9350×5830 mm

外形尺寸示意图及安装地脚图

Dimension and the foundation drawing of pouring requirements

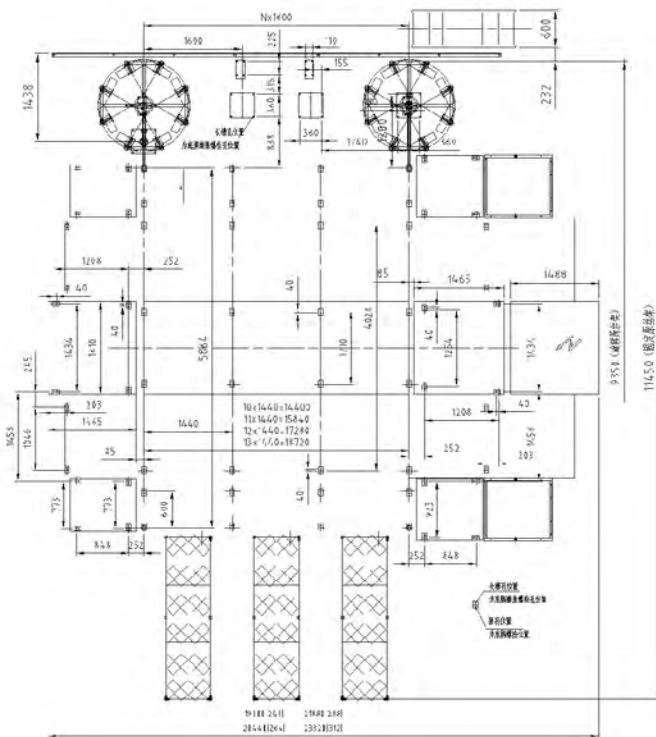
外形尺寸示意图 Dimension



- 1| 原丝架 Raw yarn shelf
- 2| 原丝饼 Raw yarn
- 3| 氨纶罗拉 Spandex roll
- 4| 探丝器 Detecting yarn device
- 5| 切丝器 Cutting device
- 6| 推丝杆 Pushing yarn bar
- 7| 止捻器 Stop twister
- 8| 上热箱 Up heater
- 9| 冷却板 Cooling board
- 10| 假捻器 False twister
- 11| D2罗拉 D2 roller
- 12| 中网 Middle interlaced
- 13| 下热箱 Down heater
- 14| W3罗拉 W3 Rolla
- 15| 探丝器 Detecting yarn device

- 16| 上油 Oiling wheel
- 17| 摩擦辊 Pinchroll
- 18| 槽筒箱 Groove drum
- 19| 吸烟管 Smoking tube
- 20| 小车 Small car
- 21| D2X罗拉 D2X roller
- 22| D1罗拉 D1 roller
- 23| D1X罗拉 D1X roller

安装地脚图 Install the anchor figure



设备主要部件性能与特点 Equipment performance and characteristics of main components

可选择安装W0罗拉结构或者氨纶罗拉

在D1罗拉下方可以根据用户需求选择安装二道W0罗拉或者二道氨纶罗拉，生产特种丝合股所需。

Under the D1 roller, you can choose to install two W0 rollers or two polyurethane rollers according to the requirements of the user.



D2罗拉配置结构 D2 roller structure

当生产细旦多孔丝时，它能够确保高质量保持长丝始终均匀，对摩擦敏感的长丝产品如全消光或有色长丝的生产，通常磨损部件的速度很快，之所以可以高效、低成本生产，就是因为牵伸盘和长丝之间无相对滑动。

When producing fine porous filaments, it can ensure high quality and uniform filaments. The production of friction-sensitive filament products, such as full dulling or colored filaments, usually wears the parts quickly. The reason for efficient and low-cost production is that there is no relative sliding between the drafting disc and filament.

探丝器 Yarn sensor

探丝器上配置有开关、纺特殊品种丝时，可随意开启和关闭探丝器，而不影响切丝器的运作。
The probe can be turned on and off at will, without affecting the operation of the cutter.



电锭假捻器 Electric false twister

安装上下两层电锭叠盘式假捻器。
Install the top and bottom two layer electric ingot tray type false twist device.



采用双卷绕布置系统，锭位数增加一倍

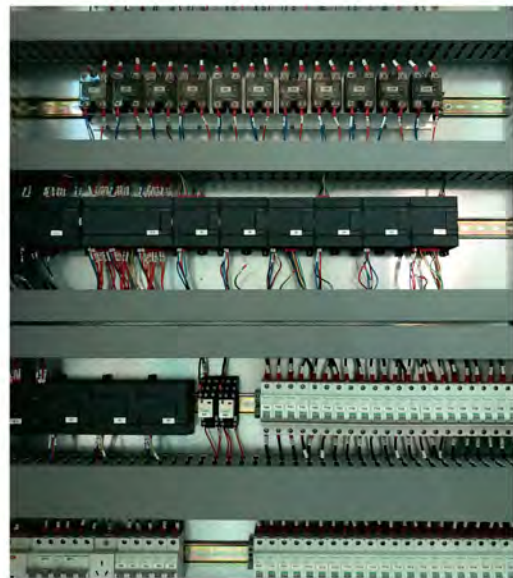
Adopt double winding arrangement system, increase ingot number

设备主要部件性能与特点 Equipment performance and characteristics of main components

控制系统 Control System

采用PLC控制系统，整机通过人机交流实现工艺调整，触摸屏显示及操作使得工艺设定简单化，采用优质的电器机器件，确保设备在使用过程中运行更为稳定、可靠。

Adopting PLC control system, the whole machine realizes process adjustment through man-machine communication, the display and operation of the touch screen make the process setting simple, and adopt high-quality electrical machinery parts to ensure the equipment running more stable and reliable in the use process.



设备安装及使用条件

Equipment Install And Service Conditions

1. 供电电压：交流380V±10%，三相五线制（3×380V/N/PE）；供电频率：50HZ±1%；具有良好的接地系统。

2. 压缩空气：常压露点≤-25℃，无油，压力≥0.6Mpa，杂质≤0.2um，残留油（0.2ppm）。

3. 设备厂房内使用环境：温度25℃±2℃，相对湿度65%±5%。

4. 安装设备的地基需采用钢筋水泥结构浇注，要有足够的的面负载能力，浇注厚度不得小于20cm，地坪水平度，纵向高低不得大于2cm，横向高低不得大于1cm。

Power supply voltage: ac 380V + / - 10%, three-phase five-wire system (3x380V/N/PE); Power supply frequency: 50HZ +/- 1%; Good grounding system.

Compressed air: atmospheric dew point - 25 or less, without oil, pressure acuity 0.6 Mpa, 0.2 um or less impurities, residual oil (0.2 PPM).

The factory using the environment: inside the room temperature 25+ 2, relative humidity of 65% plus or minus 5%.

The foundation of the installation equipment shall be reinforced concrete structure pouring, with sufficient surface load capacity, thickness of pouring shall not be less than 20cm, floor level, vertical height shall not be greater than 2cm, and horizontal height shall not be greater than 1cm.

JGT TYPE
TEXTURIZING MACHINE

High Speed Stretch Yarn Machine

勇于创新 精益求精

Never stop striving for the better

Technology

For the future

为您实现高性能的服务产品。



JGT1000V/VH



JGT1000M



JGT1000MF



JGT1000D



JGT1000E



JGT1000X



JGT1000H



JGT1000W

精功科技纺织机械解决方案 —
为纺织机械提供终身服务，减少您的烦恼。

借助我们的机械方案，您将实现新的跨越。

更多信息请访问 www.jgtec.com.cn