




DONGHENG TEXTILES
 WUJIANG DONG HENG TEXTILE CO.,LTD
 WUJIANG JUN HENG PRINTING CO.,LTD
 WUJIANG LIANYA JET WEAVING CO.,LTD
 WUJIANG FENG HENG FENG TEXTILE CO.,LTD
 SUZHOU OMEGA TEXTILE TECHNOLOGY CO.,LTD
 ■Add: No.90#South Ring(3)Road Shengze, Suzhou, Jiangsu, China
 ■Tel: 86-0512-63081188 86-0512-63083888
 ■Fax: 86-0512-63081879 63990878
 ■E-mail: yoyo@donghengtex.com.cn
 ■Http: www.donghengtex.com.cn



東恒紡織企業部分生產產品
Representative Products of Dongheng Textile

Item No.	Article	Composition	Construction	Width	Finished
DH1004-1	190T Poly Taffeta	63D*63D	106*84	58*159"	P/D
DH1005-1	210T Poly Taffeta	63D*63D	122*88	58*159"	P/D
DH1006	230T Poly Taffeta	66D*66D	144*96	58*159"	P/D
DH1008	290T Poly Taffeta	50D*50D	194*96	58*159"	P/D
DH1009	380T Poly Taffeta	20D*20D	380T	58*159"	P/D
DH2016	240T Poly Pongee	75D*75D	144*92	58*159"	P/D+W/R
DH2016-3	260T Poly Pongee	75D*75D	164*92	58*159"	P/D+W/R
DH2039-1	300T Poly Pongee (FD)	50D*50D	185*115	58*159"	P/D+W/R
DH2036	310T Poly Dobby Pongee	50D*50D	310T	58*159"	P/D+W/R
DH2067	Poly Two Ways Stretch	75D*40D*75D*40D	132*110	58*159"	P/D
DH2068	Poly Two Ways Stretch	100D*30D*100D*30D	120*86	58*159"	P/D
DH2040	400T Poly Mini-Ripstop	20D*20D	400T	58*159"	P/D+W/R
DH2026	Poly Satin	50D*75D	220*96	58*159"	P/D
DH2027	Poly Twisted Satin	50D*75D	220*100	58*159"	P/D
DH2030-1	Poly Twisted Satin SPAN	50D*75D*40D	290*96	58*159"	P/D
DH2008	Poly Micro Peach Plain	75D*150D	148*71	58*159"	W/R+PEACHED
DH2008-1	Poly Micro Peach Plain	75D*150D	148*78	58*159"	W/R+PEACHED
DH2007	Poly Micro Peach Twill	75D*150D	148*96	58*159"	W/R+PEACHED
DH2007-1	Poly Micro Peach Twill	75D*150D	148*106	58*159"	W/R+PEACHED
DH2209	Poly Micro Peach Satin	75D*150D	205*96	58*159"	W/R+PEACHED
DH2209-1	Poly Micro Peach Satin	75D*150D	205*101	58*159"	W/R+PEACHED
DH2215	228T Nylon Tason (FD)	70D*160D	228T	58*159"	P/D+W/R
DH2211	328D Double-Weft Nylon Tason	70D*(160D*2)	148*46	58*159"	P/D+W/R
DH2009	NC	70D*21S	110*76	58*159"	W/R+PEACHED
DH2018	32S NC TWILL	70D*32S	160*90	58*159"	W/R+PEACHED
DH2037	NC Herribone	70D*21S	154*86	58*159"	W/R+PEACHED
DH2206	TVC	160D*32S	135*78	58*159"	W/R+PEACHED
DH2219	21S CN	21S*140D	108*66	58*159"	W/R+PEACHED
DH2217	32S CN	32S*100D	128*88	58*159"	W/R+PEACHED
DH2217TW	32S CN 21 TWILL	32S*100D	142*86	58*159"	W/R+PEACHED
DH2220	40S CN	40S*100D	137*88	58*159"	W/R+PEACHED
DH2034	Poly Suede	75D*225D	185*92	57*158"	P/D
DH2035	Poly Suede	105D*75D	162*120	57*158"	P/D
DH2058	Poly Suede	105D*150D	205*96	57*158"	P/D
DH2059	Poly Mini Matt	300D*300D	142*127	57*158"	P/D
DH2060-1	Poly Gabardine	150D*150D	120*90	57*158"	P/D
DH2060-2	Poly Gabardine	150D*300D	130*76	57*158"	P/D
DH2060-3	Poly Gabardine	300D*300D	88*60	57*158"	P/D
DH8039	300T Poly Pongee Printing	50D*50D	185*115	58*159"	P/D+PRINTING
DH8012	Poly Satin Printing	75D*100D	172*84	58*159"	P/D+PRINTING
DH8026	Poly Satin Printing	50D*75D	220*96	58*159"	P/D+PRINTING

No.	Item No.	Article	Composition	Construction	Width	Component	Weight	
6	DH-NP0034	False Twist Elastic	175D*75D		121*81	98%5%	70g/m ²	
98	DH-NP0093	Poly Two-Way Stretch	1100D*840D*1100D*840D		127*88	99%5%5%	146g/m ²	
17	DH-NP0039	Light Crepe De Chine	150D*75D		203*88	56%57%	70g/m ²	
18	DH-NP0040	Crepe De Chine	150D*75D		162*88	56%57%	70g/m ²	
77	DH-NP0069	Poly Chiffon	1100D*1100D		115*84	57*58%	100g/m ²	
93	DH-NP0088	Poly Elastic Chiffon	1100D*1100D*840D		133*76	57*58%	87g/m ²	
78	DH-NP0070	Poly Chaotic Chiffon	175D*75D		220*112	57*58%	110g/m ²	
87	DH-NP0084	Poly Chaotic Chiffon	150D*75D		240T	57*58%	95g/m ²	
80	DH-NP0082	Chaotic Two-Way Stretch	150D*300D*150D*2		148*100	57*58%	160g/m ²	
97	DH-NP0092	Poly Satin	(720D*720D)(720D*720D)		205*100	57*58%	115g/m ²	
91A	DH-NP0059A	T/R Plain	(1150D*1150D)*86S		245*90	57*58%	90g/m ²	
24	DH-NP0004	T/R Cavalry Twill	(1150D*1150D)*86S		245*90	58*59%	90g/m ²	
61	DH-11-06#	Tencel 31 Twill	TS20S*TS30S		115*66	57*58%	215g/m ²	
62	DH-010-62#	Tencel 21 Twill	TS32S*TS32S		130*72	57*58%	155g/m ²	
63	DH-11-02#	Tencel 21 Twill	TS46S*TS46S		130*76	57*58%	125g/m ²	
27	DH-NP0001	Rayon Plain	R22S*R22S		83*56	57*58%	100g/m ²	
28	DH-NP0013	Rayon 21 Twill	R32S*R32S		140*74	57*58%	165g/m ²	
71	DH-NP0066	Rayon 21 Twill	R62S*R62S		132*76	57*58%	121g/m ²	
70	DH-NP0065	Chaotic Rayon	R32S*R32S		88*60	57*58%	118g/m ²	
68	DH-NP0063	Chaotic Rayon	R62S*R62S		90*88	57*58%	75g/m ²	
33	DH-1017B	Rayon Printing	R32S*R32S		80*72	56*56%	122g/m ²	
35	DH-1031B	Rayon Printing	R62S*R62S		100*80	56*57%	105g/m ²	
39	DH-C0084	VIC	V120D*C21S		175*91	57*58%	148%*C32%	196g/m ²
40	DH-A0884	VIC Herribone	V120D*C21S		143*91	57*58%	144%*C36%	178g/m ²
41	DH-NP0011	VR Printing	V120D*R32S		96*63	52*53%	V54%*R46%	102g/m ²
42	DH-10085	VIC 31 Twill	V120D*C46S		153*88	57*58%	V60.8%*C39.4%	136g/m ²
49	DH-A0867	VIC 3/2 Twill	V75D*C38S-C16S		159*81	57*58%	V44%*C36%	115g/m ²
51	DH-0863#	VR Plain	V75D*R62S		120*76	57*58%	V54%*R46%	81g/m ²
53	DH-7010	VIC Satin	V75D*C36S		190*106	57*58%	V69%*C40%	100g/m ²
54	DH-0955	VIC 2/2 Twill	V75D*C36S		208*125	57*58%	V68.5%*C33.5%	105g/m ²
72	DH-NP0067	VR 21 Twill	V75D*R21S		120*86	57*58%	V29%*R71%	148g/m ²
169	DH-NP00122	Twisted VR Satin	V50D*R62S		215*112	54*55%	V52%*R48%	92g/m ²
172	DH-NP00125	Viscose Georgette	V50D*90D		114*86	47*48%	V100%	55g/m ²
11	DH-NP0036	VR Crepe	V120D*R32S		100*60	52*53%	V55%*R45%	120g/m ²
106	DH-NP00100	VR Woolen	V120D*R32S		114*76	52*53%	V55%*R45%	156g/m ²
81	DH-NP0071	Poly Dobby Pongee	75D*300D		240T	57*58%	P100%	120g/m ²
82	DH-NP0072	Poly Dobby Pongee	50D*50D		300T	57*58%	P100%	87g/m ²
83	DH-NP0073	Poly Dobby Pongee	70D*160D		228T	57*58%	N100%	110g/m ²
84	DH-NP0074	Poly Dobby Pongee	50D*75D		300T	57*58%	P100%	70g/m ²
85	DH-NP0075	Poly Dobby Pongee	50D*75D		300T	57*58%	P100%	68g/m ²
86	DH-NP0077	Poly Dobby Pongee	75D*75D		240T	57*58%	P100%	83g/m ²

東恒企業旗下吳江市峻恒轉移印花有限公司引進目前國內最先進的出紙對色設備3臺套，英國進口毛毯，日本羅蘭數碼打印設備，導入ISO9001質量管理體系，所有色牢度均達到國際標準。追求卓越，創新無限。歡迎廣大客商前來洽談轉移印花加工業務。

WUJIANG JUN HENG PRINTING CO.,LTD, as an affiliate of DONG HENG group, has introduced 3 sets of the most advanced color assessment machine in China, UK imported transfer printing machine, Roland digital printing machine. All kind of colour fastness can meet the international standard. Our quality are very reliable under ISO 9001 Quality Management System. You are always welcomed to visit our company for any issue of transfer printing business.

峻恒印花部分面料印花報價單
DongHeng printing part printed fabric printing quotation

質量較高牛皮紙加工類：
High quality kraft paper used:

名稱/Name	價格/price
桃皮絨/ Peach Skin/Microfiber	1.8元/米/1.8 yuan/m
春亞紡/ Polyester Pongee	1.5元/米/1.5 yuan/m
滌塔夫/ Polyester Taffeta	1.4元/米/1.4 yuan/m
牛津布/ Oxford	1.5元/米/1.5 yuan/m
色丁布/ Satin	1.6元/米/1.6 yuan/m
麂皮絨/ Suede	2.0元/米/2.0 yuan/m
雪紡紗/ Chiffon	2.0元/米/2.0 yuan/m
針織布/ Knit fabrics	2.0元/米/2.0 yuan/m
四面彈/ 4 way Stretch	2.0元/米/2.0 yuan/m
如需另外加墊紙印花另加：0.3元/米 The price will be raised for 0.3 yuan/m if padded paper need:	
如需另外加滲透印花另加：0.5元/米 The price will be raised for 0.5 yuan/m if padded paper need:	

注：以上報價均用上等油墨和上等牛皮紙生產。起訂量：2000米。6套色以上另加：0.3元/米-0.5元/米，未滿2000米另加收300-600元調色費。選用新聞紙加工在以上基礎上優惠：0.25元/米。制版費：花圍65公分內：1800元/色。幅寬每寬10公分價格上調：0.2元/米。

Notes: The quotation is based on high quality ink and high quality kraft paper. MOQ:2000 m. Over 6 sets of topping color,the price will be raised for 0.3yuan/m-0.5yuan/m 300-600yuan surcharge is necessary if the quantity can not reach 2000m. The price will be decreased for 0.25yuan/m,if lower quality paper selected. Film cost:1800yuan/topping colour(pattern within 65cm The price will be raised for 0.2yuan/m each 10 cm if the width is over 150cm.



全自動高精出紙設備A
Automatic high-precision paper delivery equipment A




DONGHENG TEXTILES
 吳江市東恒紡織有限公司
 WUJIANG DONGHENG TEXTILE CO.,LTD.

COMPANY 企业简介 INTRODUCTION

東恒紡織有限公司源自2002年，經過10年多的辛苦耕耘目前集面料研發，織造生產、印花設計、印花加工、國際貿易為一體的綜合型企業。公司目前已經在行業裏嶄露頭角，公司先後成立了吳江市東恒紡織有限公司，吳江市峻恒轉移印花有限公司，吳江市聯亞噴織廠，吳江市峰恒峰紡織有限公司，蘇州市歐米嘉紡織科技有限公司。我們已經和國內一線品牌，歐美日很多中高檔品牌直接或間接地建立了長期穩定合作關係。

Established in 2002, DONG HENG TEXTILE CO., LTD. has been growing up quickly during the past 10 years, and became one of the most famous in the field of synthetic yarn fabric in Wujiang City. Our group has 4 affiliates: WUJIANG JUNHENG PRINTING CO., LTD., WUJIANG LIANYA WEAVING CO., LTD., WUJIANG FENG HENG TEXTILE CO., LTD. and SUZHOU OMEGA TEXTILE TECHNOLOGY CO., LTD. Now our company is specialized in weaving, printing design, printing service and international trading. The first-class quality of our productions, the best service and reasonable price make us become a global competitive supplier.

We have established long and stable cooperation relationship with many high-grade fashion brands from Japan, US and European etc. as well as Chinese mainland.

COMPANY 企业荣誉 HONORARY



我們的優勢：

一、深度的理解客户的需求

10年來與各類品牌的合作，我們對客戶的需求有深度的理解，我們的服務體貼入微，想客戶所想，想客戶未曾想。

二、超快的供貨速度

公司每一個環節的員工都會充滿激情的，用最合理，最高效的勞動，同最快的速度把高品質的樣品和大貨呈現給客戶。

三、強大的供貨能力

無論是大訂單還是小訂單，我們會全心全意把握客戶給我們的機會，我公司擁有自己的織造工廠和印花工廠，可以迅速克隆紡制各種化纖類面料，月產量達500萬米，在有效工作日內，可以保障各類紡織品訂單順利的完成。我司導入ISO9001質量管理體系認證，在提高產量的同時，品質也不斷的完善提升！

四、誠信志遠

多年的磨礪，我們嚴格要求自己，絕不把次品的東西發給客戶，我們珍惜每一米從我們手上流向客戶的成品，妥善的和客戶協商解決我們之間每一個哪怕是微小的摩擦，最終達到雙贏的結局。

五、鑄就強大的紡織品研發團隊

為了使我們在紡織行業中更加具備核心競爭力，我司成立了蘇州市歐米嘉紡織科技有限公司，專業開發各類高科、精細、新穎、複雜等紡織產品系列，更加提高紡織品的附加值，服務於各品牌服裝企業，走在流行、時尚面料前沿，搶占引領紡織品高科技份額。

Our advantages:

1, First-class service and Over 10 years' experience

With Over 10 years' experience of cooperating with world class fashion brand, we understood all of the requirements and concerns of our customers. We always find out problems and solve them before our clients mentioned.

2, Quick Response and Lead Time

Our skilled and energized workers could complete your samples and bulk products at full speed without any loss of quality.

3, Strong Supply Capacity

Our monthly production capacity is over 5 million meters. Our company has our own weaving and printing factory. Our R&D team could develop the products based on your samples and ensure that all of your orders can be completed in time and exactly as the same as your samples. We treat all our customers as the same no matter your quantity is big or small. Meanwhile, our factory is ISO 9001 qualified. Our production process is strictly according to ISO requirement and it provides a strong security of our quality.

4, Well-trained Staff and Strict Self-critical

We strictly demand ourselves for past 10 years. We treat every 1m fabric sent to our customers and never allow even 1m defected fabric to get out from our factory. We solve any tiny complaint from our customer seriously and make sure our customers to be satisfied. We believe that our cooperation will turn out to be win-win relationship.

5, Strong R&D Team and New Fabric Develop Ability

To make our group much more competitive in textile field, we set up SUZHOU OMEGA TEXTILE TECHNOLOGY CO., LTD, which is devoted in developing high-quality, high-density, new fashion style and complex fabric, mainly used for branded fashion company. It raises the additional value of the new developing fabric and also keeps our group always in the front-line of the fashion. Meanwhile, our market share for high-tech textile has been raising stably



Outdoor Fabrics/Performance Fabrics/Sportswear Fabric Series 户外面料 / 防寒服面料 / 運動服面料系列

輕便舒適的運動服裝、休閒茄克，是參加戶外活動的必備裝備，東恒紡織強大的技術力量，為您提供專業的戶外防寒服面料。產品有四面彈、高彈、機械彈、尼絲紡、塔絲隆、春亞紡、C/N、N/C、T/N/C等。

Light-weight, comfortable sportswear, casual jacket is necessary equipment for outdoor activity. DONGHENG TEXTILE can provide professional performance fabrics for your outdoor clothing.

Our products include: 4 way stretch, high stretch, mechanic stretch, nylon taffeta, taslon, polyester pongee, C/N、N/C、T/N/C etc.



Beach Pants Fabric/Workwear Fabric Series 沙灘褲面料 / 工裝面料系列

吳江市聯亞噴織廠是一家成長中的工廠，專業織造各種化纖類噴水產品，可以織造各種平紋、斜紋、緞紋、雙噴、四面彈系列，提花類化纖面料及裏料，年噴織各類化纖布2500萬米以上；工廠以優越的質量嚴謹的管理取得了良好的信譽，專業為市場提供一流的各類沙灘褲面料、工裝面料及各種化纖面料。

產品有：桃皮絨、麂皮絨、華達呢、卡丹絨、平紋呢、牛津布、滌塔夫等。

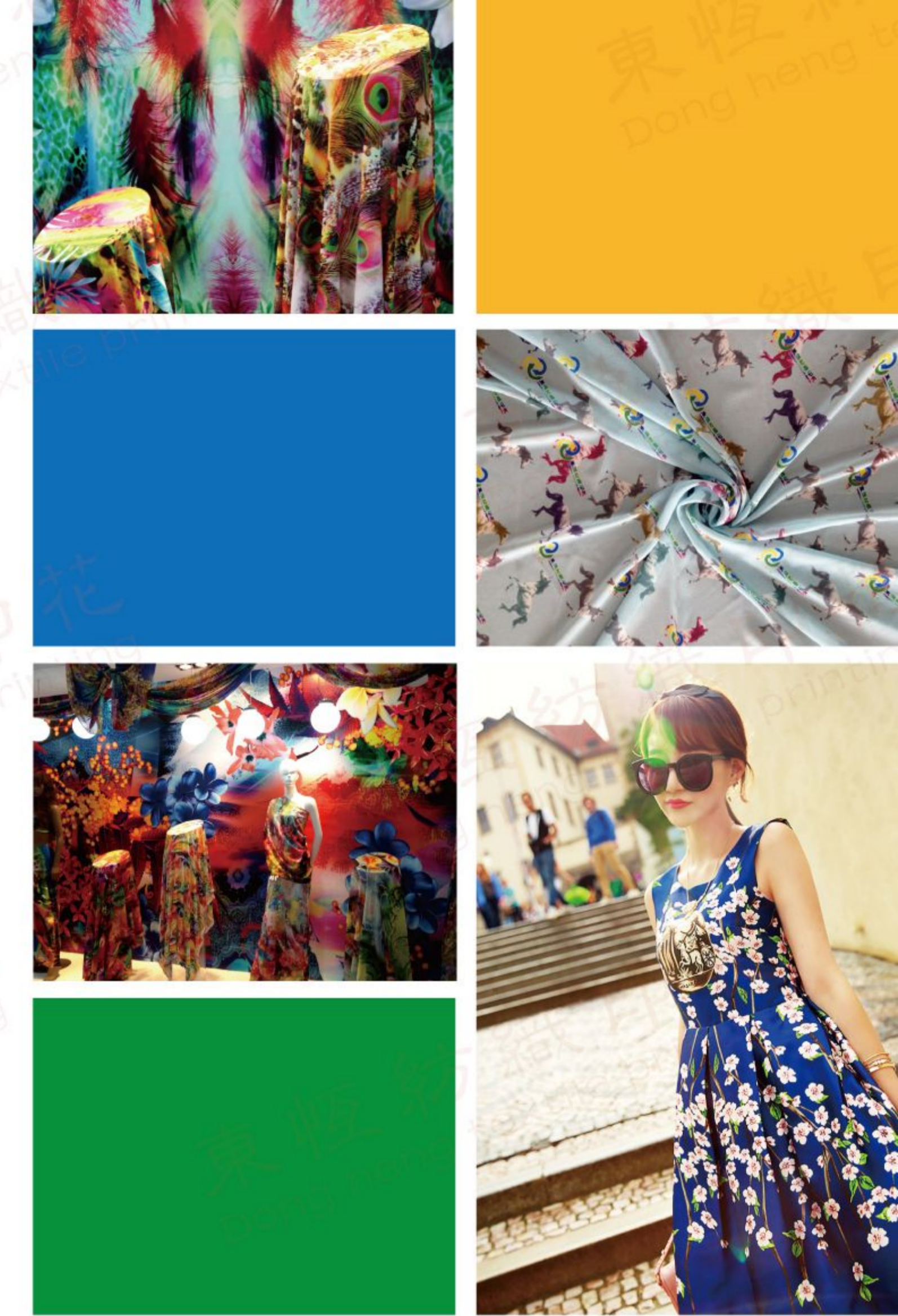
WUJIANG LIANYA JET WEAVING CO., LTD is specialized in weaving water jetting chemical fabrics, including plain, twill, satin, double-jetting, 4-way stretch and jacquard chemical fabrics and lining. Our annual production capacity is over 25 million meters and we supplier high-quality beach pants fabrics, workwear fabrics and various kinds of chemical fabrics. Our factory is high praised because of our excellent quality control system.

Our products include: peach skin/microfiber, suede, gabardine, peach twill, mini matt, oxford, polyester taffeta, etc.



卓越品质 / 追求完美 More than Quality / More than Perfect

優秀的企業文化使企業更有凝聚力，東恒擁有強大的生產能力，專業化的技術管理，充足的貨源儲備，是您對產品高品質的強大保證。
Excellent company culture makes our company united to be one. The big production capacity, professional, adequate stocks, adequate stocks, advanced equipment and professional team is the guarantee of our high quality products and high quality service.



Fashion Fabric Series 時裝面料系列

我司專業生產製造各種仿真絲時裝類面料系列。產品有雪紡，色丁，滌雙綢，花瑤系列，高捻亂麻，超薄滌紗系列，順紆綢，高絲寶，復合絲系列等產品。公司專注國內外女裝面料的研發和制作，擁有一個完善的技術和開發團隊。現代化嚴謹的管理，前衛時尚的面料設計。力爭國內時裝面料第一品牌供應商。歡迎新來客商前來洽談，合作，開發！

Our group is devoted in producing imitation silk fashion fabrics, including chiffon, satin, crepe de chine, faille, high-twisted moss crepe, georgette, goshibo, compound yarn etc. We specialized the production and development of lady's fashion fabrics. Our professional R & D team, over 10 years' know-how, advanced quality control system makes our group to be one of the first class fashion fabric supplier in China. Looking forward to visiting our company for cooperation and fabric development.

