





# DYECOL TURQUOISE BLUE SERIES



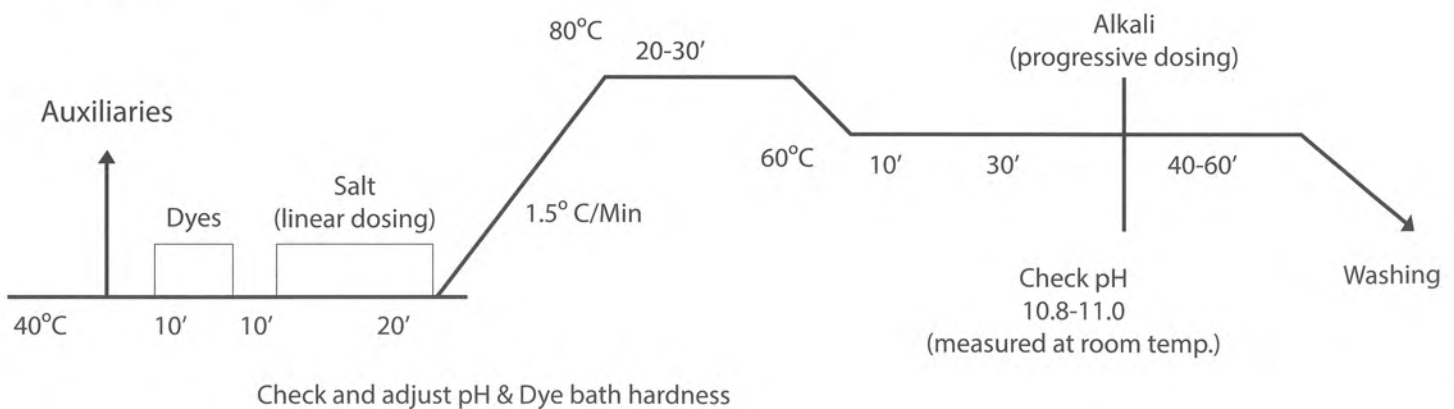
# DYECOL TURQUOISE BLUE SERIES

The range of Turquoise Blue Dyes offered by Shree Pushkar Chemicals & Fertilisers Ltd. is formulated efficiently and can be used flexibly in different applications. The company offers two types of reactive Turquoise Blue Dyes at the best prices in the market. The range of reactive Turquoise Blue Dyes, made by the company, is based on its end uses and varied applications.

DYECOL TURQUOISE BLUE DYES		Process Suitability								Solubility in gpl		Dischargeability	Fastness Properties			Perspiration Fastness (ISO 105-E04)				Chlorinated Water 20mg/L ISO105-E03	Dry Rubbing (M&S C8)	Wet Rubbing (M&S C8)
		Warm Exhaust	Cold Pad Batch	Pad Dry Pad Steam	Pad Dry Steam	Pad Dry Thermo Fix	E Control	Printing	Straight	With 30gpl common salt	Washing ISO 105-C03		Light ISO 105-B02	Acidic		Alkaline						
											Effect			Stain	Effect	Stain	Effect	Stain				
	2%																					
TURQUOISE BLUE GC		Y	Y	Y	Y	Y	Y	Y	80	30	ND	4-5	3	5	6	4-5	5	4-5	2-3	4-5	3	
TURQUOISE BLUE H2GP		Y	Y	N	N	N	N	Y	80	30	ND	4-5	3	5	5	4-5	5	4-5	3-4	4-5	3	

Note: Y stands for suitable, N stands for not suitable and ND stands for non-dischargeable.

## Migration Method



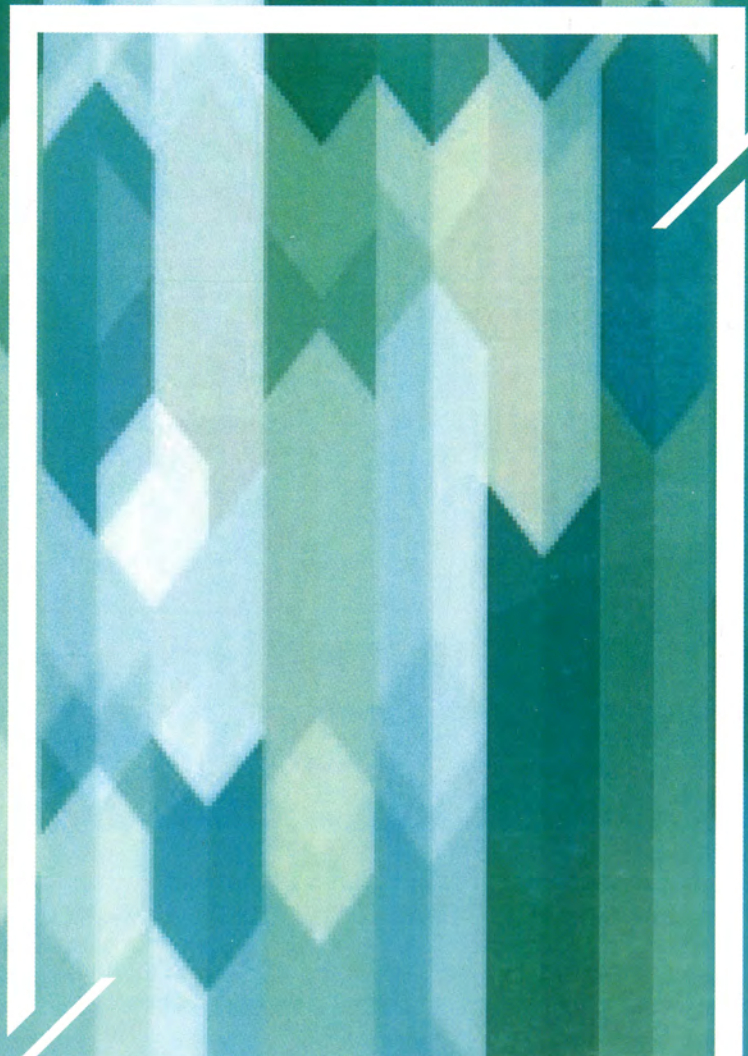
Named after the gemstone of the same colour, the word 'turquoise' comes from the French for Turkish, as the gem was originally imported to Europe from Turkey. The first recorded use of the turquoise as not only a new for the gemstone, but also for the colour, can be dated back to 1573, while the first recorded use of turquoise blue as a name for a colour can be dated to 1900. In many cultures, turquoise was valued for thousands of years as a holy stone, a talisman, and a bringer of good luck.

## FEATURES

- Excellent depth
- Excellent salt solubility
- Good allround fastness properties
- Solubility 100 g/L at 30°C
- Easy wash-off
- Robust to process variables
- Reactivity medium, affinity high
- Good alkali stability

## BENEFITS

- Economical
- Versatile application suitability
- Suitable for pale to dark trichromy shades
- Brilliant bluish turquoise having high-colour yield
- Reproducible





**SHREE PUSHKAR CHEMICALS & FERTILISERS LTD.**

301/302, 3<sup>rd</sup> Floor, Atlanta Centre, Near Udyog Bhawan,  
Sonawala Road, Goregoan (East), Mumbai - 400 063, India.  
T: +91 22 4270 2525  
Mob: +91 86574 09150  
E-mail: [nnm@shreepushkar.com](mailto:nnm@shreepushkar.com)  
Website: [www.shreepushkar.com](http://www.shreepushkar.com)

DYECOL TURQUOISE BLUE SERIES 001



# DYECOL ROYAL BLUE SERIES



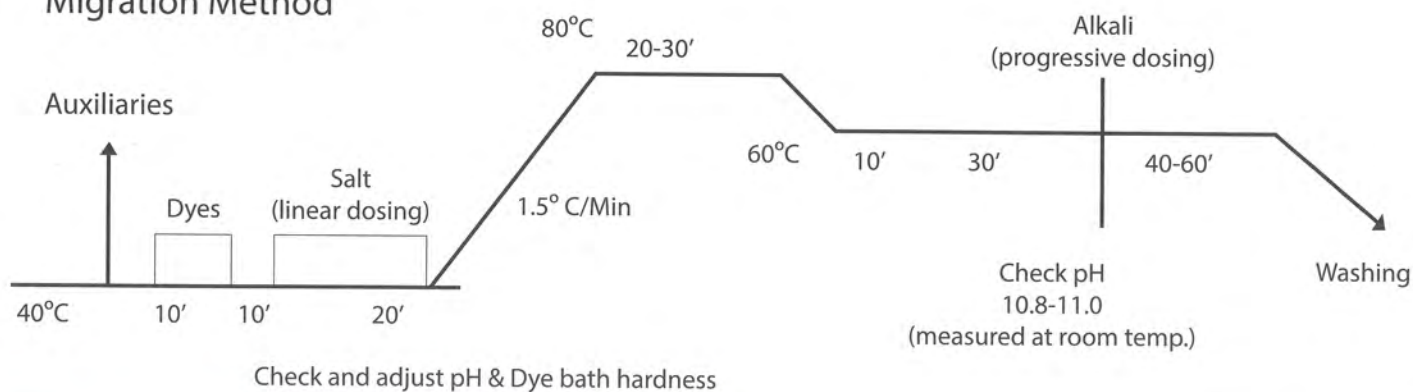
# DYECOL ROYAL BLUE SERIES

The range of reactive Royal Blue Dyes offered by Shree Pushkar Chemicals & Fertilisers Ltd. is formulated efficiently and can be used flexibly in different applications. The company offers its variety of reactive Royal Blue Dyes at the best prices in the market. The range of reactive Royal Blue Dyes, made by the company, is based on its end uses and varied applications.

DYECOL Royal Blue	2%	Process Suitability							Solubility in gpl		Dischargeability	Fastness Properties						Perspiration Fastness (ISO 105-E04)				Chlorinated Water 20mg/L ISO 105-E03	Dry Rubbing (M&S C8)	Wet Rubbing (M&S C8)
		Warm Exhaust	Cold Pad Batch	Pad Dry Pad Steam	Pad Dry Steam	Pad Dry Thermo Fix	E Control	Printing	Straight	With 30gpl common salt		Washing ISO 105-C03		Light AATCC 16E 20AFU		Light ISO 105-B02		Acidic		Alkaline				
												Effect	Stain	0.1%	1%	0.1%	1%	Effect	Stain	Effect	Stain			
ROYAL BLUE CLBR		Y	Y	Y	Y	Y	Y	Y	100	50	ND	4-5	4-5	4	4-5	5	5-6	4	4	4	4	3-4	4-5	4
ROYAL BLUE SFNG		Y	Y	Y	N	Y	N	N	100	80	ND	4-5	4	4	4-5	5	5-6	4-5	4	4-5	4	4	4-5	3-4
ROYAL BLUE SFNR		Y	Y	Y	Y	Y	Y	Y	60	40	ND	4-5	4-5	3-4	4	4-5	5	4	4-5	4	4	4	4-5	4
OCEAN BLUE SR		Y	Y	Y	Y	Y	Y	Y	100	80	ND	4-5	4	3-4	4	4-5	5	4-5	4-5	4	4	4	4-5	3-4
OCEAN BLUE SG		Y	Y	Y	Y	Y	Y	Y	100	80	ND	4-5	4	3-4	4	4-5	5	4-5	4-5	4	4	3-4	4-5	4

Note: Y stands for suitable, N stands for not suitable and ND stands for non-dischargeable.

## Migration Method



Royal Blue is believed to have originated in the 17<sup>th</sup> and 18<sup>th</sup> century, when King George III of the United Kingdom tested clothiers across the country to deliver a shade suitable for utilization by royalty. Scutts Bridge Mill in Rode, Somerset, created an extremely rich shade of blue, which would come to be known as 'Royal Blue,' and was first used in the creation of a robe for Queen Charlotte, wife of the king.

## FEATURES

- › Brilliant Royal Blue shades with good solubility
- › Excellent salt solubility
- › Solubility 90 g/L at 30°C
- › High fixation rate and good fastness to washing
- › Robust to process variables

## BENEFITS

- › Economical
- › Suitable for pale to dark shades in all applications
- › Reactivity medium
- › Reproducible
- › Good compatibility with other dyes



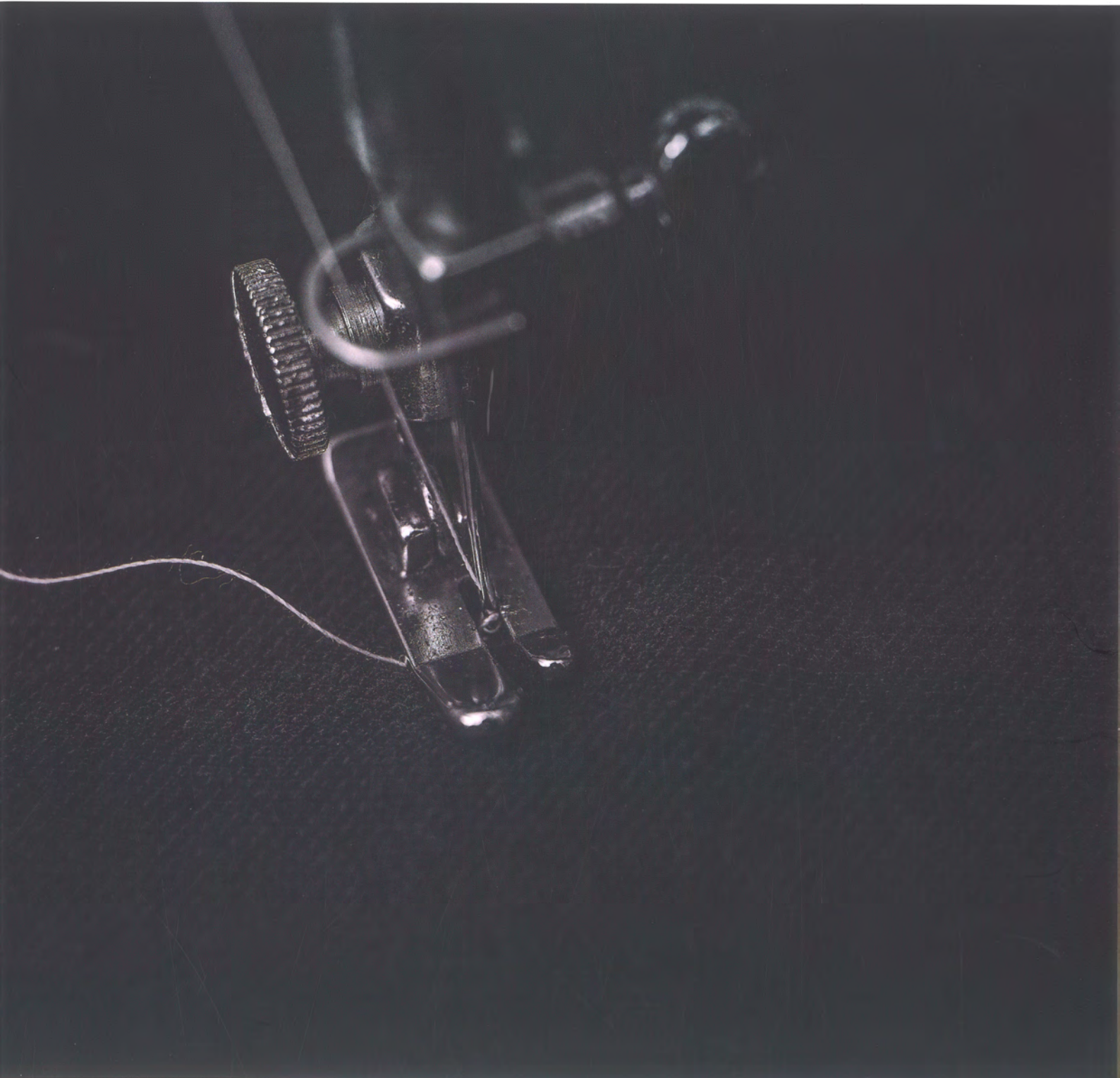


**SHREE PUSHKAR CHEMICALS & FERTILISERS LTD.**

301/302, 3<sup>rd</sup> Floor, Atlanta Centre, Near Udyog Bhawan,  
Sonawala Road, Goregoan (East), Mumbai - 400 063, India  
T: +91 22 4270 2525  
Mob: +91 86574 09150  
E-mail: [nnm@shreepushkar.com](mailto:nnm@shreepushkar.com)  
Website: [www.shreepushkar.com](http://www.shreepushkar.com)

DYECOL ROYAL BLUE SERIES 001





**DYECOL  
BLACK SERIES**



# DYECOL BLACK SERIES

This range of reactive Black Dyes offered by Shree Pushkar Chemicals & Fertilisers Ltd. is formulated efficiently and can be used flexibly in different applications. It is offered at the best prices in the market and is formulated based on its end uses and varied applications.

DYECOL Blacks		Process Suitability								Solubility in gpl		Dischargeability	Fastness Properties		Light ISO 105-B02	Perspiration Fastness				Chlorinated Water JIS L-0884 (10mg)	Dry Rubbing (M&S C8)	Wet Rubbing (M&S C8)
		Warm Exhaust	Cold Pad Batch	Pad Dry Pad Steam	Pad Dry Steam	Pad Dry Thermo Fix	E Control	Printing	Straight	With 30gpl common salt	Washing ISO 105-C03		Acidic			Alkaline						
Effect	Stain										Effect	Stain	Effect	Stain								
BLACK CENN		Y	Y	Y	Y	Y	Y	Y	150	100	Y	4	4	4	4	5	4	4-5	4	4-5	3	
BLACK CEG		Y	Y	Y	Y	Y	Y	Y	150	100	Y	4	4-5	4	4	5	4-5	4-5	4	4-5	3	
BLACK CER		Y	Y	Y	Y	Y	Y	Y	150	100	Y	4	4-5	4	4	5	4-5	4-5	4	4-5	3	
BLACK CEL		Y	Y	Y	Y	Y	Y	Y	150	100	Y	4-5	4	4	4-5	5	4-5	4-5	4	4-5	3	
BLACK CES		Y	Y	Y	Y	Y	Y	Y	150	100	Y	4	4	4	4-5	5	4-5	4-5	4	4-5	2-3	
BLACK CEX		Y	Y	Y	Y	Y	Y	Y	150	100	Y	4	4	4	4	5	4	4-5	4	4-5	2-3	
BLACK DR		Y	Y	Y	Y	Y	Y	Y	150	100	Y	4	4	3	4	5	4	4-5	4	4-5	2-3	
BLACK CE2N		Y	Y	Y	Y	Y	Y	Y	150	100	Y	4	4	3	4	5	4	4-5	4	4-5	2-3	
BLACK CEDN		Y	Y	Y	Y	Y	Y	Y	150	100	Y	4	4	3	4	5	4	4-5	4	4-5	2-3	

Note: Y stands for suitable.

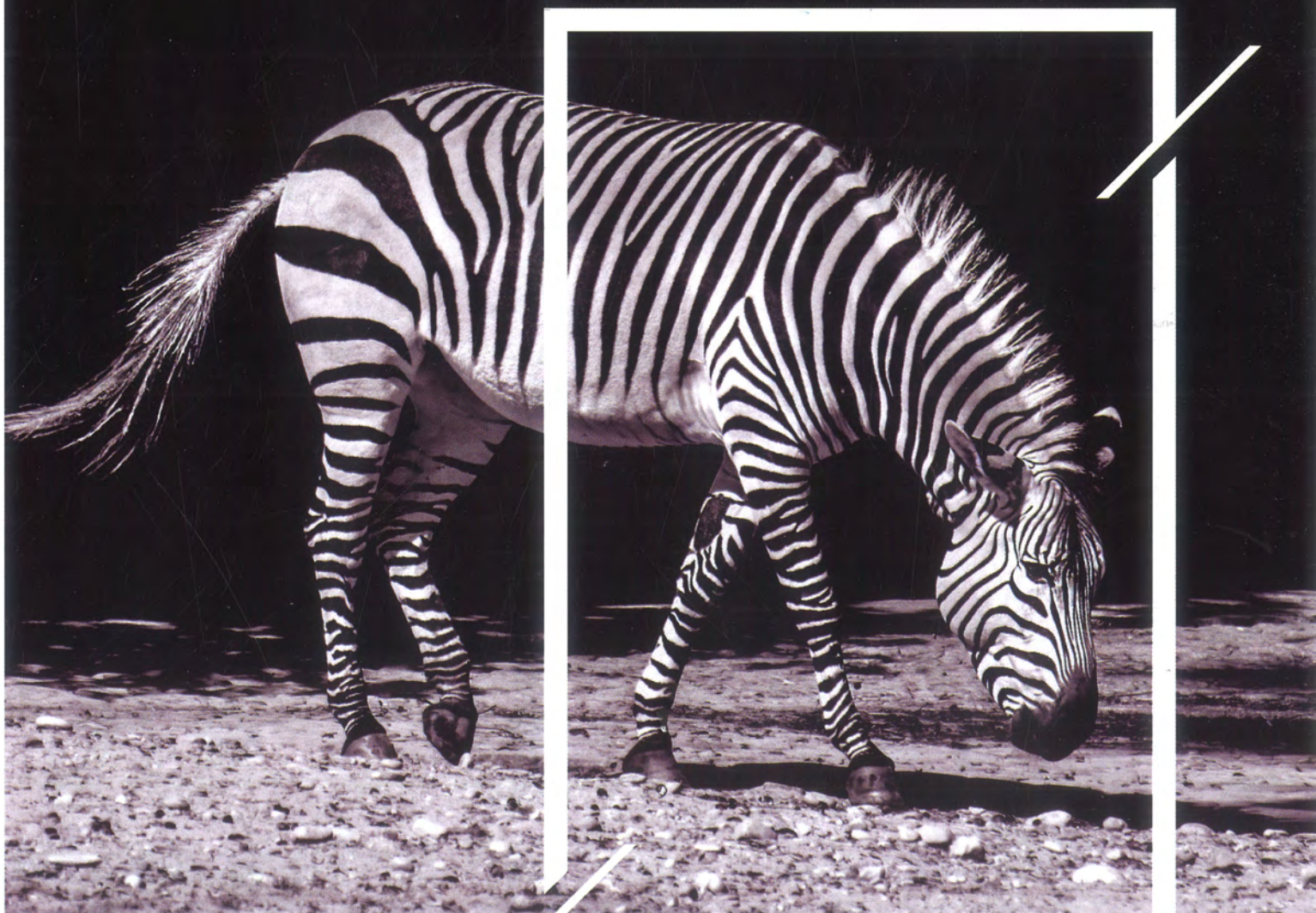
In the Middle Ages in Europe, the best way to produce black dye was from oak apples, a dyestuff that was extremely expensive to acquire. This resulted in black dye being just as expensive to produce. Due to its exclusivity rising from its price, black clothes were a favourite of the wealthy merchant class, as well as nobility - resulting in a fashion for black clothes that lasts to present times.

## FEATURES

- Excellent jet-black shade at lower depths
- Excellent salt solubility
- Good post-mercerization fastness
- Good wet-rub fastness among reactive blacks
- Easy wash-off
- Robust to process variables

## BENEFITS

- Economical
- Suitable for yarn dyeing, as well as fabric and garment dyeing & washing
- Dyeing cycle is reduced
- Reproducible





**SHREE PUSHKAR CHEMICALS & FERTILISERS LTD.**

301/302, 3<sup>rd</sup> Floor, Atlanta Centre, Near Udyog Bhawan,  
Sonawala Road, Goregoan (East), Mumbai - 400 063, India.  
T: +91 22 4270 2525  
Mob: +91 86574 09150  
E-mail: [nnm@shreepushkar.com](mailto:nnm@shreepushkar.com)  
Website: [www.shreepushkar.com](http://www.shreepushkar.com)

DYECOL BLACK SERIES 001