

Rhea International

Garment trims and accessories division

Rashmi Kamplimath - 09964478090 - rashmi@rheainternational.in

Anand Thakkar - 08197396464 - anand@rheainternational.in

Address: No 30, Ramagondanahalli, Yelahanka New Town, Bangalore, India 560064



Tested for harmful substances

according to Oeko-Tex® Standard 100

16CX00017

CENTROCOT

About us

- ▶ Rhea International, based in Bangalore India is a one stop solution for all garment accessories.
- ▶ We import all kind of garment trims / laces / lace fabrics from China / Taiwan and deliver to our clients warehouse in India.
- ▶ Our primary objective is to provide world class service so that our customer need not waste their precious time in finding right supplier for the products.
- ▶ We supply OEKO Tex certified quality products which meets all US and EU international standards
- ▶ We ensure that the packaging of products is of the highest standard so that goods reaches the warehouse safely.
- ▶ We cater to requirement of small quantities.
- ▶ With a seasoned team who has educated themselves for more than two decades in apparel manufacturing and sourcing, we have earned customer satisfaction rating throughout our career.
- ▶ Our enthusiastic team entrusts full partnership in the whole process, which means you have zero risk as all our manufacturers have a proven track record.

Our Current Products

► Trims & Accessories

- Metal Tabs - embossed / engraved
- Shanks & Rivets
- Snaps / Eyelets
- Cord ends / toggles
- Zipper pullers
- D rings
- Back loop buttons
- Sew on 2 holes / 4 holes buttons
- Toggles / Hook and eye
- Buckle and adjusters
- Stones and studs (heat transfer)
- High density transfer print stickers
- Chinese knots / Velvet tapes
- Flowers / pompoms
- Belts (Kids / Ladies & Men)
- Suspenders
- Keychains
- Embroidered badges
- Sequins patches
- Fabric applique
- PU & leather patches / zipper sealents
- Fashion Jewellery
- Elastics (Jacquard / printed)
- Draw cords
- Rubber patches
- Satin /velvet / herringbone & organza tapes (Solid as well as digital printed)
- Embossing on fabric (Woven / knit)

Our Esteemed Clientele

- ▶ West Side - Trent
- ▶ Firstcry.com - Mumbai
- ▶ Reliance / AJIO - Bangalore
- ▶ The Walt Disney Company India Private Limited - Mumbai and Delhi
- ▶ Future Group - Mumbai
- ▶ Aditya Birla - Bangalore - Karnataka
- ▶ KIABI - Europe
- ▶ CHROMOZOME - Mumbai
- ▶ Trio Creations - Bangalore - Karnataka
- ▶ Versatile Clothing - Tirupur -T.N.
- ▶ Anugraha Fashions - Tirupur - T.N.
- ▶ Eastman Exports Pvt Ltd - Tirupur -T.N.
- ▶ Fancy Knitts - Tirupur -T.N.
- ▶ Thangamman Fashions - Tirupur -T.N.
- ▶ Huechem Textiles- Tirupur -T.N.
- ▶ Opera Clothing Private Ltd - Mumbai -M.H.
- ▶ Jaishree Garments - Mumbai -M.H.
- ▶ Katmandu Apparels - Mumbai -M.H.
- ▶ Maheshwari Impex - Delhi
- ▶ Omni Knits - Ludhiana - Punjab
- ▶ Ishvar International - Gurgaon - Haryana
- ▶ Max Exports - Gurgaon - Haryana
- ▶ Lakshay Knits - Ludhiana - Punjab
- ▶ Jagdambay Lifestyle - Ludhiana - Punjab
- ▶ Ishita Knits - Ludhiana - Punjab
- ▶ Findoc Impex - Ludhiana - Punjab
- ▶ Sangam India Ltd - Bhilwara - Rajasthan
- ▶ Malgo Exports - Jaipur - Rajasthan
- ▶ The Choice Fashions - Jaipur - Rajasthan
- ▶ Kothari Industries Private Ltd- Kolkatta
- ▶ Wrecker Jeans - Noida - U.P.

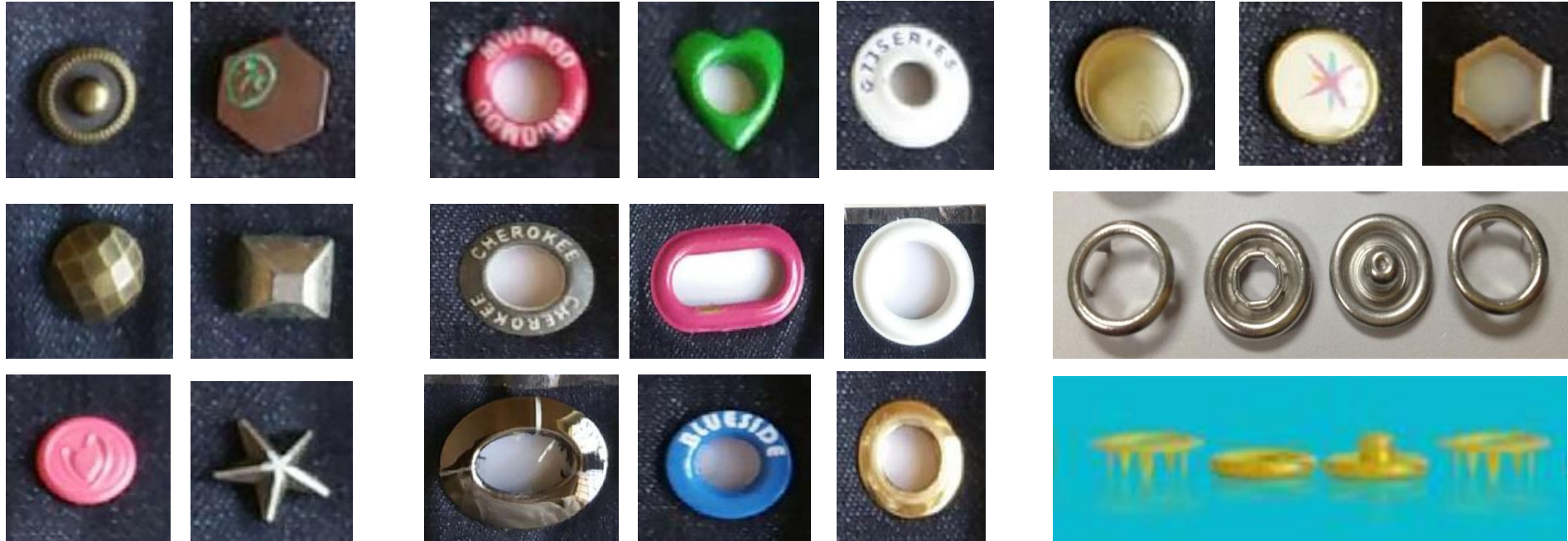
Metal ID's



Shanks & Snap buttons



Rivets ,eyelets, prongs



Cord ends, zipper pullers, D ring



Buckles , hook & eye



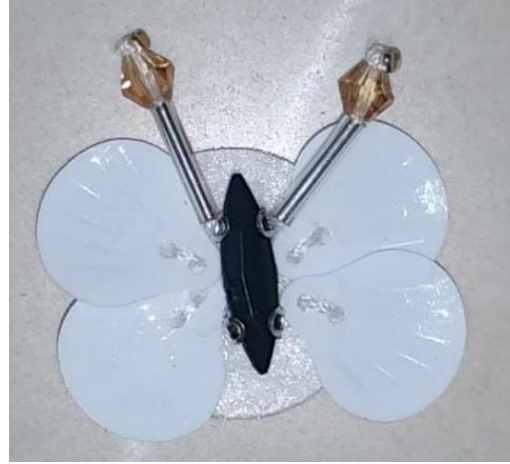
Buttons



Sequins Patches



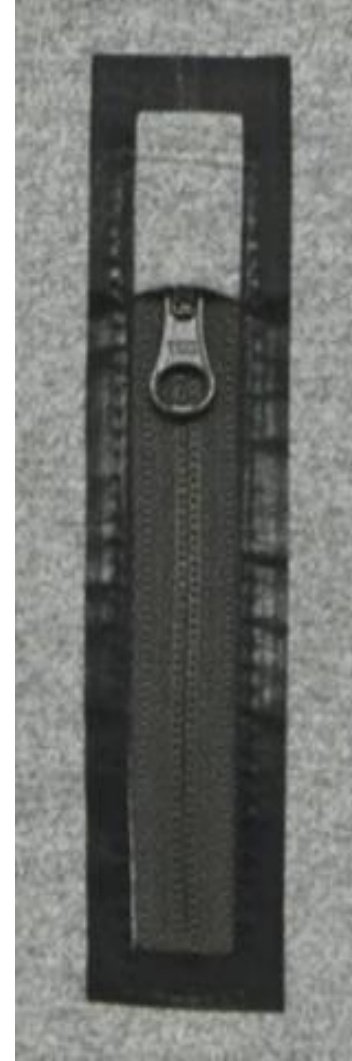
Fancy Patches



Keychains



PU & Leather belts / PU heat sealing



Rubber / PU / Leather Patches



Suspenders for girls and boys



SATIN TAPES - Single & double sided



Multi colour printed tapes



Velvet tapes - Single & double sided



Stretch Laces in different widths/ designs



Thank you

The background features abstract, overlapping geometric shapes in various shades of green, primarily on the right side, creating a modern and dynamic visual effect.