

空白演示

单击输入您的封面副标题

2361503

128 GSM



ISFY16042
100% COTTON
50-50-50X50-50-50
153X136
67/58"
135 GSM

J5Y453582

53% COTTON 47% POLYESTER

45X45 120X90

WIDTH: 57/58"

WEIGHT: 110GSM



JS190312-N

65% COTTON 45% POLYESTER

45X45+45/2 114X90

WIDTH: 57/58"

WEIGHT: 115 GSM



WEAVING MILL
C. 04 九. 15. 88 01
400 125 0000
1234567

JSFY17160
100% COTTON DOUBLE LAYER
40X40 100X90
57/58" 110 GSM



NO.9 WEAVING MILL
无锡九色纺织
www.126.com
(391216150)

JS19112-B
100% COTTON DOUBLE LAYER
40X40 120X100
57/58"
128 GSM



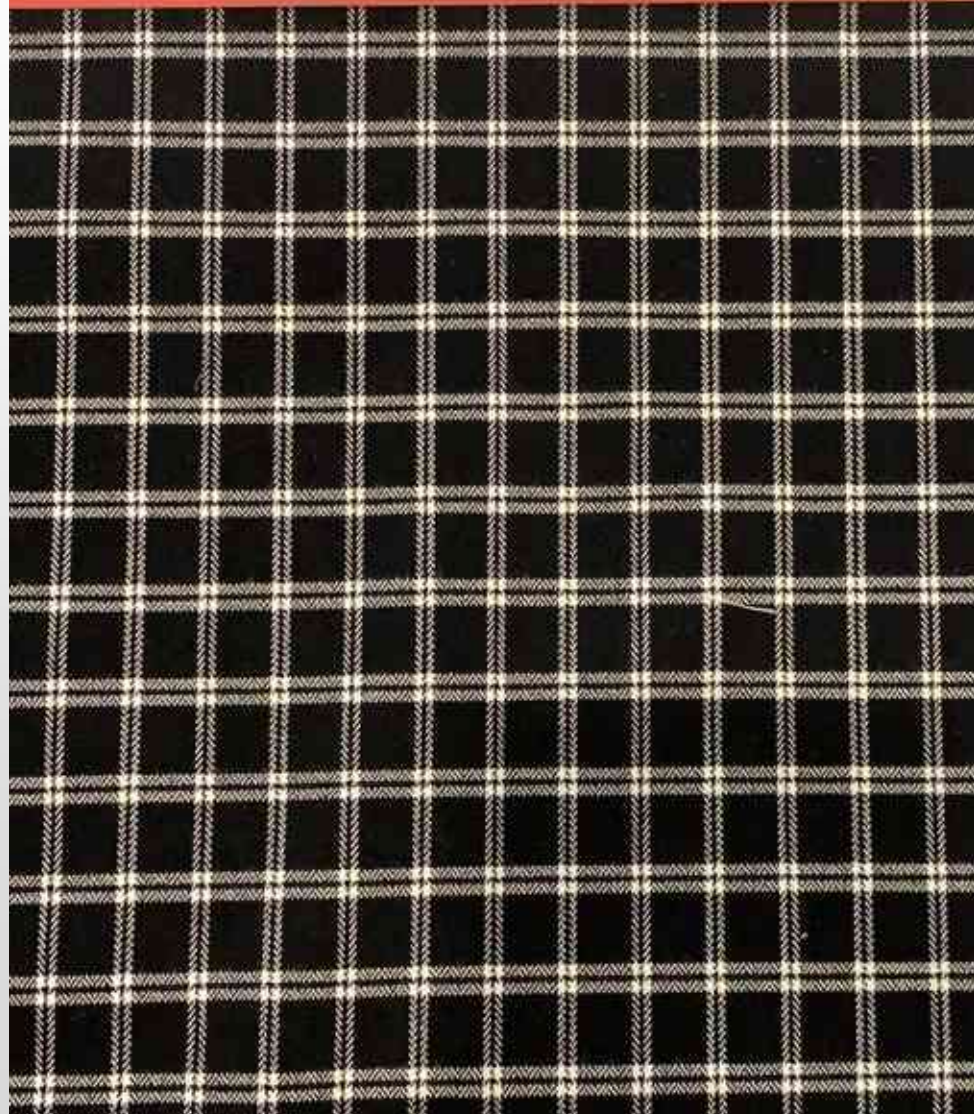
WEAVING NO.9 WEAVING MILL
A.M.A. 02.03.01
www.com@120.com
+86 13912361501

JS19112
100% COTTON DOUBLE LAYER
40X40 120X100
67/58"
110 GSM



JSY405526-B

65%polyester 32%rayon 3%cupra
32/2X12/2-70D 92X72
WIDTH: 48/50"
WEIGHT: 155 GSM



JS16157
100% COTTON
50+50+50X50+50+50
153X136
57/58"
135 GSM



J5Y213207
100% COTTON
21-21SB X21-21SB 72X64
WIDTH 57-58"
WEIGHT: 150 GSM



WEAVING MILL
A.M.A.C. 1991
www.amm.com
86 12912361501

15100405-1

100% COTTON
22X22 600/4
WIDTH: 27.5"
WEIGHT: 95 GSM



AVING MILL
A. 色 粉 房
2k.com
41503

JST160028-A

100% COTTON
10312 64346
WIDTH: 57/58
WEIGHT: 196 GSM



J5Y100340

100% COTTON

10*10X10*10 62X52

WIDTH: 57/58"

WEIGHT: 275 GSM



JS190312-K-2

55% COTTON 45% POLYESTER

21X45/45 68X54

WIDTH: 57/58"

WEIGHT: 100 GSM

WING MILL
九色格呢
26.com
1503

J5Y100083

65POLYESTER 35COTTON
21/22X21/2 64X50
WIDTH: 48/50"
WEIGHT: 263 GSM



JSY160894

100% COTTON

16X21 80X58

WIDTH: 57/58"

WEIGHT: 184 GSN



REF NO.	JSE/17009
COMPOSITION	100% COTTON
CONSTRUCTION	21x21 90x36
WIDTH	57" / 58"
WEIGHT	140 GSM
FINISHING	REGULAR
DATE	



NO.9 WEAVING MILL
无锡九色纺织
com@126.com
13912361503

JS18070

100% COTTON
10+10X10+10 68X60
WIDTH: 57/58"
WEIGHT: 310 GSM



JS181022-1

100% COTTON

21X21 80X60

WIDTH: 57/58"

WEIGHT: 155 GSM



MILL
纺织



JSY405235-D
97% COTTON 3% SPANDEX
32/2 并花线 X21+40D
WIDTH: 52/54" *56x/8*
WEIGHT: 235 GSM



WUXI NO.9 WEAVING MILL
无锡九色纺织
E-mail: roascom@126.com
Tel: +86 15912361503

J51213190
100% COTTON
21-H10/2221-H10/2 06350
WIDTH: 57/58"
WEIGHT: 145 GSM



MILL
纺织

cm

JSP110127/W
50% COTTON 50% POLYESTER
21X21 64X60+复合布
WIDTH: 57/58"
WEIGHT: 340GSM



JS200408-H

STYLE:

55% COTTON 45% RAYON

32X21 72X62

WIDTH : 57/98"

WEIGHT : 130 GSM

15



JSY213015

100% COTTON

21X21+7 64X62

WIDTH: 57/58"

WEIGHT: 160 GSM



JSY212740

55% COTTON 45% POLYESTER

21+21X21+21 84X80

WIDTH: 57/58"

WEIGHT: 185 GSM



AVING MILL
九色格织
126.com
61303

JSY100383

100%COTTON

TX7 44X34

WIDTH: 57/58"

WEIGHT: 265GSM



PT-9371
JSY211885
100%COTTON
40/2*40/2 66*62
57/58
150GSM



JSMLD70232

44% COTTON 41% POLYESTER 15% L

32X21 70X60

WIDTH: 57/58"

WEIGHT: 115 GSM



JSV213450

100% COTTON

21X21 72X62

WIDTH : 57/58"

WEIGHT : 145 GSM



rosecom@126.com
+86 13912361503

WIDTH: 57/58"
WEIGHT: 270 GSM



WEAVING MILL
无锡九色纺织
n@126.com
12361503

JSY160306

100% COTTON

16X16 70X60

WIDTH: 57/58

WEIGHT: 195 GSN



WIDTH: 57/58"

WEIGHT: 235 GSM



WUXI NO.9 WEAVING MILL
无锡九色纺织

rosecom@126.com
+86 13912361503

JSY322275

100%COTTON CHECK

32*32 90*70

57/58 段染

135GSM



16*16 60*56

57/58

170GSM



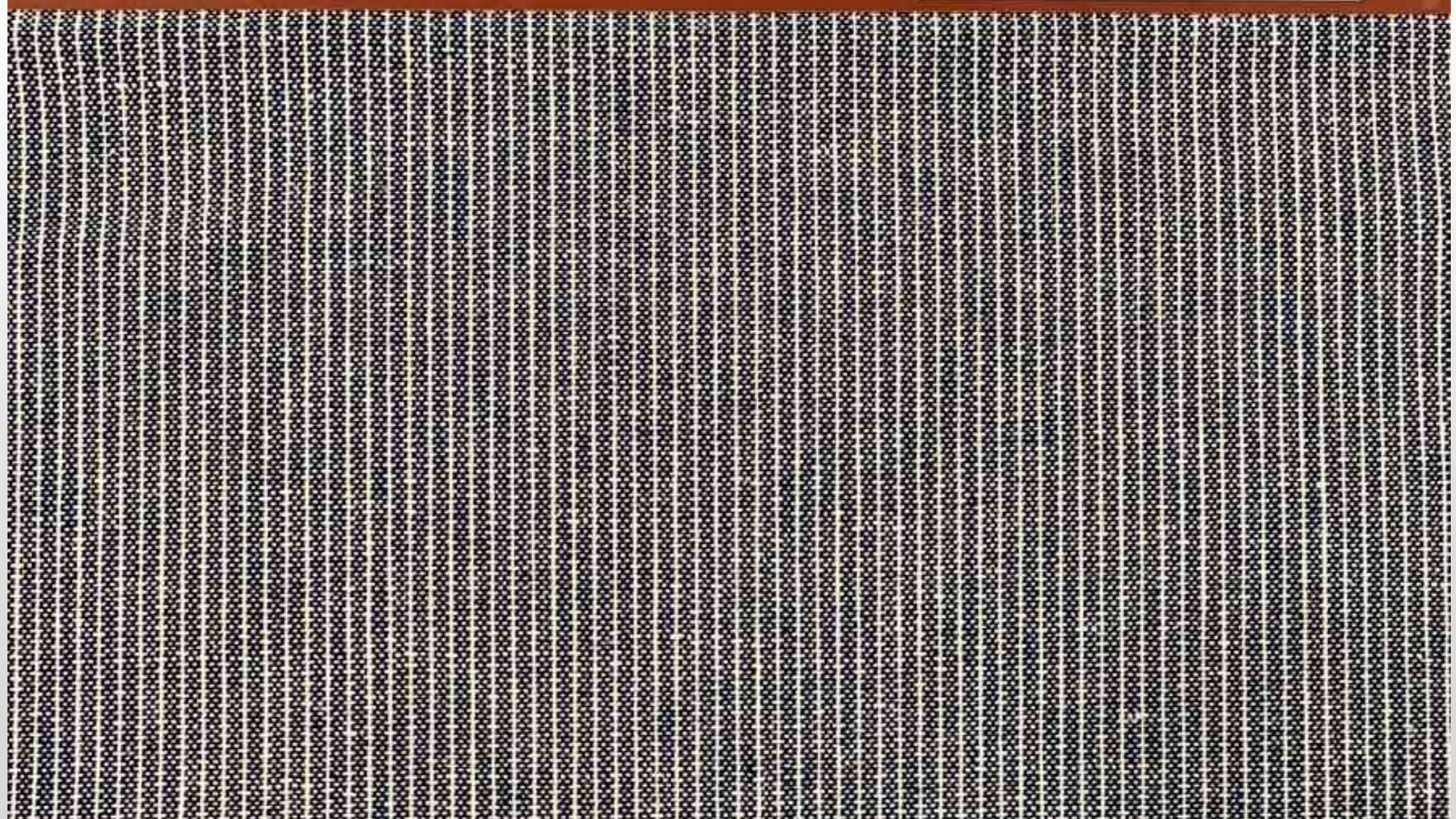
纺织
m

70%VISCOSE 30%LINEN

10X10 44X38

WIDTH: 57/58"

WEIGHT: 195 GSM





NO.9 WEAVING MILL
无锡九色纺织

ecom@126.com
13912361503

JSFY18129-B

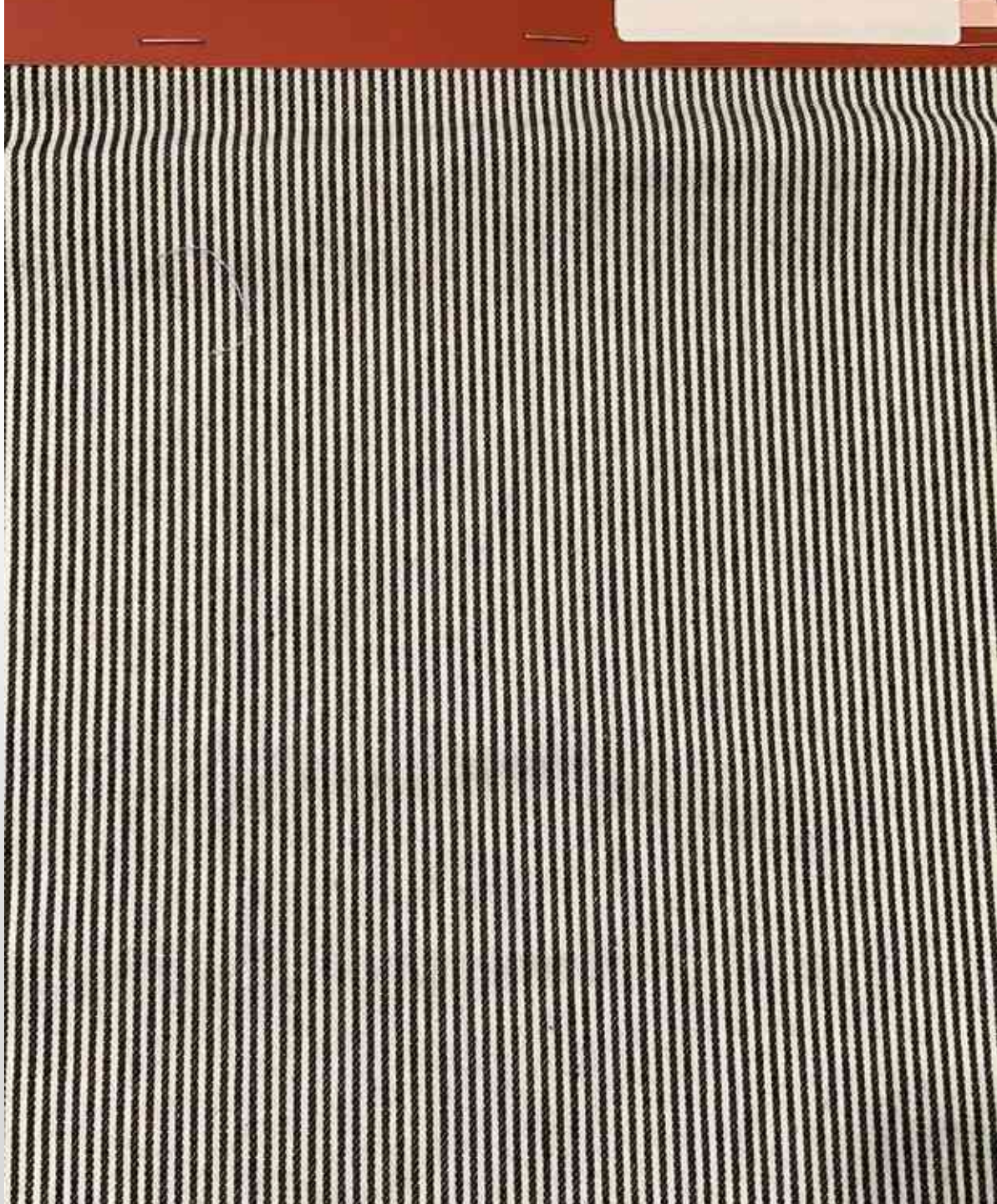
50%COTTON 50%POLYESTER

21X21 64X54+复合布

WIDTH: 57/58"

WEIGHT: 258GSM





JSY100387

100%COTTON

10+10X10+10 62X52

WIDTH: 57/58"

WEIGHT: 275 GSM





WUXI NO. 9 WEAVING MILL
无锡九号纺织

E-mail: wuxcom@126.com
Mobile: +86 15942361503

JST 007267

100% COTTON, 255 GSM
32X32-100, 100/20
WIDTH: 44.50"
WEIGHT: 145 GSM



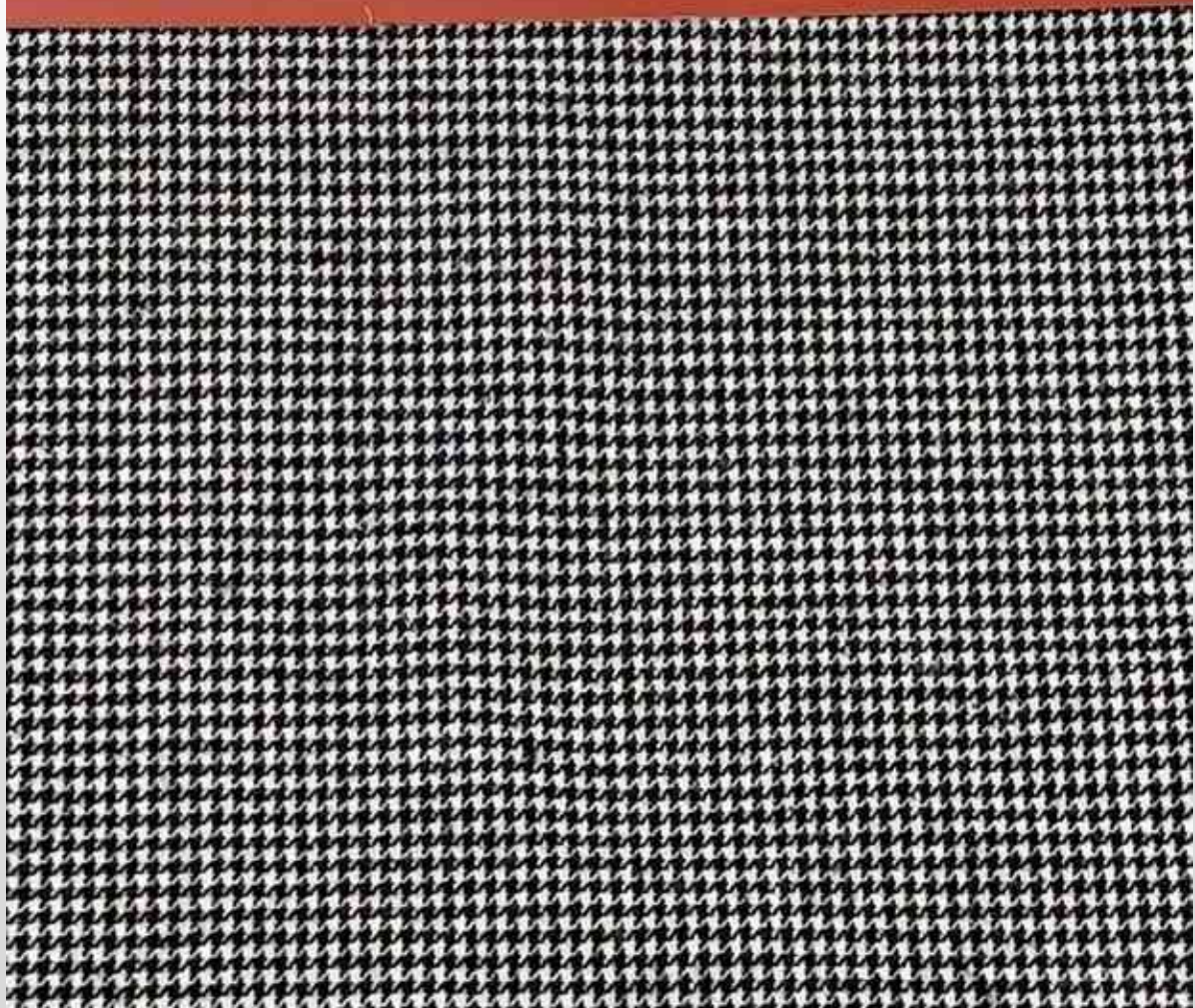
JSY100393

100%COTTON

12X12 64X64

WIDTH: 57/58"

WEIGHT: 235 GSM



JS190312-K-1

55%COTTON 45%POLYESTER

21X45/45 68X54

WIDTH: 57/58"

WEIGHT: 100 GSM



TUXI NO.9 WEAVING MILL
无锡九色纺织
rosecom@126.com
+86 1391361503

JSY160687

100% COTTON
16X12 60X50
WIDTH: 57/58
WEIGHT: 190 GSM



JSY212240

100% COTTON

40/2X32 60X60

WIDTH: 57/58"

WEIGHT: 112 GSN



JS19003-1

100% COTTON

21X21 80X60

WIDTH: 57/58"

WEIGHT: 155 GSM



111
111
111

REF. NO.	ISY/1607P
COMPOSITION	100% COTTON
CONSTRUCTION	16T/24X16T/34, 68X/6
WIDTH	57"/58"
WEIGHT	18.5 GSM
FINISHING	Wash
DATE	



MILL
00 001
000



JSY100380
100% COTTON
10-10X10-10 54-48
WIDTH: 57/58"
WEIGHT: 245 GSM



JS17092-9188

100% COTTON

21X21 80X60

WIDTH: 57/58"

WEIGHT: 155 GSM



TING MILL
L. C. 18 01
S. 000
563

JSY212467-E
100% COTTON CHAMBRAY
21*21 110*00
57/58
19002M

