



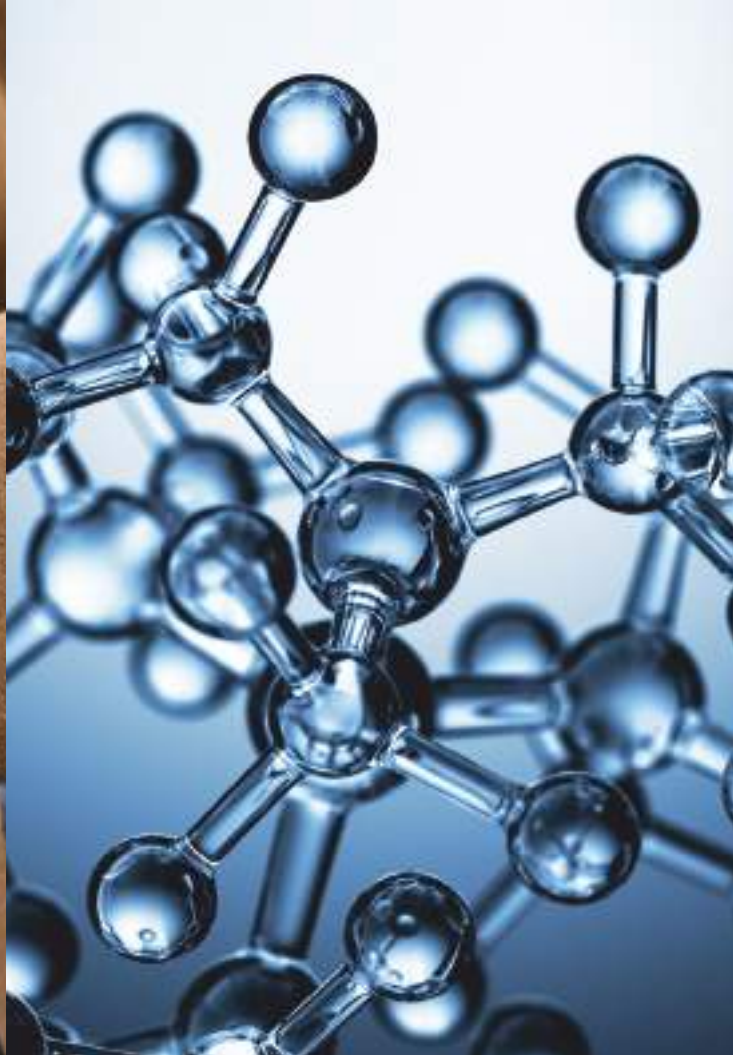
FARBEN
THE CHEMICAL PRODUCER



alpine

LEATHER CHEMICALS

www.farben.com.tr
www.herkingroup.com





SUMMARY



BEAMHOUSE 2



POLYMERS 6



OILS 8



RETANNING AGENTS 12



DYEING AUXILARY 16



FARBEN
THE CHEMICAL PRODUCER



alpine

BEAMHOUSE

SOAKING AGENTS



PRODUCTS	MAIN CHARACTERISTICS	USE
ALPINE POLYWET WTL High Performance Wetting Agent	Characteristics : Combination of special surfactants Concentration (%) : $46,0 \pm 1,0$ pH Value (10 % in water) : 6,0 - 8,0 Ionic Structure : Anionic-Nonionic	Alpine POLYWET WTL is used for all type of leathers in the soaking process and rewetting. It provides fast wetting of crust and raw hide. It reduces the time of soaking. It shows the homogeneous distribution on cross-section. It ensures clean pelt and wool. It shows the ability to use in different pH.
ALPINE POLYWET SA Wetting, Liming and Back Wetting Auxiliary	Characteristics : Combination of alkyl sulfate and alkyl polyglycolether derivatives Concentration (%) : $25,0 \pm 1,0$ pH Value (10 % in water) : 6,0 - 8,0 Ionic Structure : Anionic-Nonionic	Alpine POLYWET SA is used in the soaking process and rewetting. When used in the liming process it provides softness. As well as good wetting agents, it has a high resistance to hard water, acids and alkalies.

BIOCIDES

PRODUCTS	MAIN CHARACTERISTICS	USE
ALPINE BBC 700 General Bactericide	Characteristics : DMDTC (Dimethyldithiocarbamate) Concentration (%) : $41,0 \pm 1,0$ pH Value (10 % in water) : 10,0 - 11,0	Alpine BBC 700 is a product that prevents bacterial growth in wetting and washing processes. Recommended usage rates: By weight of the total skin and water 0,05 – 0,20 %
ALPINE BFU 702-S Fungicide	Characteristics : TCMTB (thiocyanomethyltiobenzothiazole) Concentration (%) : 30,0 (TCMTB) pH Value (10 % in water) : 3,5 - 5,0	Alpine BFU 702-S is used in pickling and wet-blue leather. It removes the fungal effects on vegetable-tanned leather, retanning, fatliquoring and finished leather.

LIMING AGENTS

PRODUCTS	MAIN CHARACTERISTICS	USE
ALPINE LMV 675 Liming Agent	Characteristics : Combination of amino compounds and reductive materials Concentration (%) : $52,0 \pm 1,0$ pH Value (10 % in water) : 10,0 - 12,0	Alpine LMV 675 opening leather fiber structure better, enables the hairs rapidly move away from the skin. At the same time preventing of excessive swelling of grain, uptake of lime and sodium sulphide balances. Therefore by preventing vascularization gives smooth and flat skin. Provides recovery of the skin area. It is obtained more fuller and soft leather
ALPINE LMV 671 Liming Agent	Characteristics : Mixture of organic reducing agents pH Value (10 % in water) : $10,5 \pm 0,5$	Alpine LMV 671 It is a liming material for all kinds of leather, Significant reduction in fractures, good and rapid removal of hair and hair root Prevention of rubella extreme swelling Prevention of gaps in the skin Light colored tola

DELIMING AGENTS

PRODUCTS	MAIN CHARACTERISTICS	USE
ALPINE DLA 800-N Deliming Agent	Characteristics : Deliming agent that contains buffering organic and inorganic salts and complexing materials Concentration (%) : 96,0 - 98,0 pH Value (10 % in water) : 5,0 - 6,0	While Alpine DLA 800-N deliming quickly and properly in all sections in deliming bath, it also removes lime stains and lime that bound chemically to the tissue without damaging the skin removes. By adding to the brine bath is obtained significant fullness. With improving effects of chrome fixation , as a result of the subsequent washing of after shaving and retanning bath, chromium loss becomes less. A standardization process that eliminates color differences of dyeing of splitting and different origin chromed leather has been developed by utilizing this feature of product.

DEGREASING AGENT



PRODUCTS	MAIN CHARACTERISTICS	USE
ALPINE DEGRAPOL HT Special Degreasing Agent for Leather and Fur	Characteristics : Fatty alcohol polyglycol ether-based degreasing agent Concentration (%) : 70,0 ± 1,0 pH Value (10 % in water) : 6,0 - 8,0 Ionic Structure : Nonionic	Alpine DEGRAPOL HT can be used for degreasing all types of leather. Particularly is suitable for skin containing natural oil highly. It is used as degreasing agent for the production of fur and skins in soaking, liming, deliming, bating and rewetting stages. As it includes a high percentage of active substance, it provides a degreasing of double face leather and perfect wool cleaning.
ALPINE DEGRAPOL FN Wetting and degreasing agent	Characteristics : Special combination of alkyl phenol polyglycoether Concentration (%) : 29,0 ± 1,0 pH Value (10 % in water) : 6,0 - 8,0 Ionic Structure : Anionic	It is used for all types of leather in soaking and degreasing processes. It has excellent ability wetting and emulsifying properties It is stable to hard water and chemicals used in leather process. It provides clean pelt and thin grain.
ALPINE DEGRAPOL RC Wetting and degreasing agent	Characteristics : Fatty alcohol polyglycol ether based degreasing agent Concentration (%) : 48,0 ± 1,0 pH Value (10 % in water) : 6,0 - 8,0 Ionic Structure : Nonionic	It is used in degreasing process of all kinds of skin. It is used as degreasing agent for the production of fur and skins in soaking, liming, deliming, bating and rewetting stages. It is suitable for emulsifying of natural oil. It provides excellent wool cleaning and degreasing for double face leather. It ensures very clean pelt and wet-blue. It provides uniform dyeing on section and surface. Its environmental damage is minimum for being biodegradable.

SPECIAL ENZYMES

PRODUCTS	MAIN CHARACTERISTICS	USE
ALPINE EWE 640 Enzymatic Soaking Agent	Characteristics : Bacterial enzyme preparation Activity : 2000 LVU/g pH Value (10 % in water) : 7,0 - 8,0	Alpine EWE 640 is an enzyme based soaking and softening material. Removing wastes such as blood and hair on the skin quickly, reduces wetting time also. It provides to move away from the skin by breaking down unstructured proteins like albumin, globulin. During liming reducing skin tension prevents shrinkage. Thus forms a cleaner skin. Alpine EWE 640 that shows alkaline properties does not allow an increase in pH in soaking and liming stages. Thus prevents cracking of the skin.
ALPINE ENZIMACID H Acidic Bating Agent	Appearance : White powder Characteristics : Mixture of bacterial enzymes and buffering and carrier products pH Value (10 % in water) : 8,0 - 9,0	Alpine ENZIMACID H is high activity acidic bating product that used for production of fur-suede especially. It is suitable for use pickled and chromed leather. It is used soaking, liming and bating processes. It imparts perfect softness to the skin. It can be used in acidic bating of each type of skin. It may be given to the baths pH value 5,0 – 6,0
ALPINE DVP 900 Acidic Bating Agent	Appearance : Beige powder Characteristics : Specific enzyme preparation for acid bating pH Value (10 % in water) : 6,0 - 7,0	Alpine DVP 900 penetrates deep into the skin sections during the process and enables the removal of unwanted globular proteins. In this way, opened fiber makes it easier to be more uniform dyeing and retanning. - Especially developed for the slightly acidic environment is an enzyme preparation. Processed leather that using Alpine DVP 900 was observed that fattiquoring, dyeing and retanning were more uniform, the diameter of processed leather increased and obtained light and soft skin. In addition to all these properties Alpine DVP 900 can be used for manufacturing from pickling to neutralization stage all kinds of leather and furs.

BATING AGENTS



PRODUCTS	MAIN CHARACTERISTICS	USE
ALPINE BAT 1000-N Bating Agent	Characteristics : Mixture of bacterial enzymes and buffering and carrier products Enzymatic Activity : 1000 \pm 50 LVU/g pH Value (10 % in water) : 6,5 – 7,5	Alpine BAT 1000-N by opening the skin structure without affecting the collagen cleans the hair follicles. It provides substantially strength in the skin after using. At the same time it forms an area expansion in the skin. It is used to obtain flexible and fuller touch, neat and clean grain leather and to eliminate substantially wrinkles and vessels
ALPINE ENZIMACID H Acidic Bating Agent	Characteristics : Mixture of bacterial enzymes and buffering and carrier products pH Value (10 % in water) : 8,0 - 9,0	Alpine ENZIMACID H is high activity acidic bating product that used for production of fur-suede especially. It is suitable for use pickled and chromed leather. It is used soaking, liming and bating processes. It can be used in acidic bating of each type of skin. - It may be given to the baths pH value 5,0 – 6,0.

BASIFICATION AGENTS

PRODUCTS	MAIN CHARACTERISTICS	USE
ALPINE TBA 555 N Basification Agent	Appearance : White powder Characteristics : Basification agent based on magnesium oxide	Alpine TBA 555 N is obtained smooth chrome distribution in sections and surface, because of providing controlled pH rising. Chrome crash does not occur. It ensures high chromium uptake and chrome fixation. In the bath with slow dissolution provides much more controlled pH change. Do not form insoluble salts in the skin. It is obtained homogeneous dyeing with using Alpine TBA 555 N. It is added to chrome bath after penetration of chromium salts. Afterwards is rotated cabinet 6-8 hours. If it is used masking products in chrome tanning stage, Alpine TBA 555 N should be added after about one hour from the masking product
ALPINE TM-AB Special Masking Agent	Appearance : White powder Characteristics : Chrome masking material comprising the inorganic salt of dicarboxylic acid Concentration (%) : 97,0 \pm 1,0 pH Value (10 % in water) : 6,5 - 7,5	Alpine TM-AB is used in chrome tanning bath as masking agent, also in neutralization bath as high light fastness synthetic tanning agent. It provides binding higher proportion of chrome in the bath to the skin as chrome masking. Although it reduce the consumption of chrome, it enhances fullness on porous and weak areas of the skin. During neutralization with the use of Alpine TM-AB showing the effect on skin section, increases the effects of other materials used in neutralization. It decreases dyeing errors observed weak part of leather.

BH AUXILIARIES

PRODUCTS	MAIN CHARACTERISTICS	USE
ALPINE EWP 661 pH Regulator for Soaking Operations	Characteristics : Mixture of salts and alkaline earth mineral oxide pH Value (10 % in water) : 10,0 - 12,0	Alpine EWP 661 is a material which allows the pH to rise gradually remaining at an optimum level until the end of soaking. Does not require control after processing. It is also suitable for soaking process of high-fat bovine leather. Optionally can be used mixing with other products. In soaking stage can be applied by alone or combined with sodium sulfite, sodium hydroxide or sodium carbonate in a controlled manner to adjust pH. If leather that will be soaking is too oily, the amount of usage should be increased. All rates are based on pelt weight. After 1 hour, the pH must remain constant. - It is not suitable for use as basification agent in tanning and retanning process.
ALPINE PLUS PF Polyphosphate	Chemical Structure : Mixture of anionic neutral polyphosphate Appearance : White powder Ph (%10 in water) : 5,0 - 6,0	ALPINE PLUS PF is a mixture of anionic neutral polyphosphate. It is used up to 10% of the total amount of lime for providing of suspension of lime and distribution uniformly and in order to prevent precipitation of lime and lime stains in liming. ALPINE PLUS PF has also pre-tanning effect at the same time. Thus, prevents swelling of acid and facilitates removal of the natural fat of the skin.



FARBEN
THE CHEMICAL PRODUCER



alpine

POLYMERS



PRODUCTS	MAIN CHARACTERISTICS	USE
ALPINE AKRAPOL Polymeric retanning agent	Concentration(%) : 37,5±1 Ph : 5,0– 6,0	Smooth and tight grain leathers is obtained. It does not affect tone and depth of dyeing. Due to the special materials in the structure while filling skin, protects its natural flexibility and softness
ALPINE AKRAPOL SOFT Polymeric retanning agent	Concentration(%) : 37,5±1 Ph : 5,0– 6,0	Full, smooth and tight grain leathers is obtained. It does not affect vitality, tone and depth of dyeing. protects its natural flexibility and softness.
ALPINE PLUSTAN C Polymeric retanning agent	Concentration(%) : 26,0±1 Ph : 4,5– 5,5	Full, smooth and tight grain leathers is obtained. It does not affect vitality, tone and depth of dyeing. protects its natural flexibility and softness.
ALPINE POLMER Softening and Filling Polymer Tanning Material	Concentration(%) : 45,0±1 Ph : 6,0-8,0	Excellent product for tanning process which is desired firmness, softness and fullness. It is seen very smooth and elastic touch when processed leather with Alpine POLMER. It is compatible with all anionic products. For example, vegetable tanning, fatliquoring and dyeing. It can be used after neutralization or retanning and before or after fatliquoring. Its effect of giving fullness and firmness increases with syntans and metal tanning salts when combined.
ALPINE RAC 300 Polymeric retanning agent	Concentration(%) : 40,0±1 Ph : 6,0-6,5	Alpine RAC 300 is used for retannage of all types of chrome tanned leather. Full, smooth and tight grain leathers is obtained. It does not affect vitality, tone and depth of dyeing. Due to the special materials in the structure while filling skin, protects its natural flexibility and softness. It can be used with anionic retannage materials. It is used diluting with warm water
ALPINE RAC 301 Polymeric retanning agent	Concentration(%) : 35,5±1 Ph : 5,0-5,5	Alpine RAC 301 is used for retannage of all types of chrome tanned leather. Full, smooth and tight grain leathers is obtained. It does not affect vitality, tone and depth of dyeing. Due to the special materials in the structure while filling skin, protects its natural flexibility and softness. Products with high light fastness, after neutralization pH 4,5 and above penetrates into the skin. It can be used with anionic retannage materials. It is used diluting with warm water
ALPINE RETADERM L 137 Polymeric retanning agent	Concentration(%) : 35,5±1 Ph : 5,0-5,5	Alpine RETADERM L 137 is used for retannage of all types of chrome tanned leather. Full, smooth and tight grain leathers is obtained. It does not affect vitality, tone and depth of dyeing. Due to the special materials in the structure while filling skin, protects its natural flexibility and softness. Products with high light fastness, after neutralization pH 4,5 and above penetrates into the skin. It can be used with anionic retannage materials. It is used diluting with warm water
ALPINE RSM 300 Polymeric retanning agent	Concentration(%) : 35,0±1 Ph : 6,0-8,0	Styrene-maleic resin. Alpine RSM 300 is an excellent product for a retanning process desired tightness, softness, fullness. - In the skin of leather finished by using Alpine RSM 300 occurs very smooth and elastic touch. It is observed to increase chrome fixation of leather retanning with Alpine RSM 300 and to decrease chromium salts in 15-20 % ratio. - It is compatible with all anionic products. For example, anionic dyes, anionic fatliquors, and vegetable tanning etc. - It may be used immediately after neutralization or in retanning, before or after fatliquoring. - When combined with syntans and metallic tanning salts, its fullness and firmness effect increases.
ALPINE RSM 335 Polymeric retanning agent	Concentration(%) : 30,0±1 Ph : 8,0-9,0	Styrene-maleic resin .ALPINE RSM 335 is used for retannage of all types of chrome tanned leather. Due to the special materials in the structure while filling skin, protects its natural flexibility and softness. It improves the fixation of the chrome. It can be used with anionic retannage materials such as dyestuffs, syntans, vegetable tannins, anionic fatliquors. When combined with syntans and metallic tanning salts, its fullness and firmness effect increases. It may be used immediately after neutralization or in retanning, before or after fatliquoring
ALPINE RSM 330 Polymeric Retanning Agent	Concentration (%) : 35,0 ± 1,0 pH Value (10 % in water) : 6,0 - 8,0	Styrene-maleic resin Alpine RSM 330 is an excellent product for a retanning process desired tightness, softness, fullness. In the skin of leather finished by using Alpine RSM 330 occurs very smooth and elastic touch. It is observed to increase chrome fixation of leather retanning with Alpine RSM 330 and to decrease chromium salts in 15-20 % ratio. It is compatible with all anionic products. For example, anionic dyes, anionic fatliquors, and vegetable tanning etc. It may be used immediately after neutralization or in retanning, before or after fatliquoring. When combined with syntans and metallic tanning salts, its fullness and firmness effect increases.
ALPINE RETADERM W Polymeric Retanning Agent	Concentration (%) : 45,0 ± 1,0 pH Value (10 % in water) : 4,5 - 5,5	Dispersion of vinyl polymer.Alpine RETADERM W is used for the retannage of all types of chrome-tanned leather. It is obtained full and properly leather. - Alpine RETADERM W can be used either as a complement of retannage or at the end of fatliquoring to improve tightness of the leather. Its use is thus recommended for splits, velour, nubuck and for particularly loose leathers. It is not stable to chrome salts, vegetable extracts, acrylic and melaminic resins and to electrolytes in general. The product should not be used at temperatures higher than 60 °C
ALPINE 5437 Polymeric Retanning Agent	Concentration (%) : 52,0 ± 1,0 pH Value (d) : 4,0 - 5,0	Dispersion of vinyl polymer. Alpine 5437 is used for the retannage of all types of chrome-tanned leather. It is obtained full and properly leather.Alpine 5437 can be used either as a complement of retannage or at the end of fatliquoring to improve tightness of the leather. Its use is thus recommended for splits, velour, nubuck and for particularly loose leathers. It is not stable to chrome salts, vegetable extracts, acrylic and melaminic resins and to electrolytes in general. The product should not be used at temperatures higher than 60 °C.



FARBEN
THE CHEMICAL PRODUCER



alpine

OILS



PRODUCTS	MAIN CHARACTERISTICS	USE
ALPINE FAT LICKER SA Sulphited Fatliquoring Agent	Concentration(%) : 65±1 Ph : 6,0-7,0	Combination of sulphited oil and synthetic oil. Alpine FAT LICKER SA imparts to the leathers very good softness and it has a good electrolyte stability. It provides an unique suitable when requested soft leather such as upholstery, gloving or pleasant touch and non-greasy features
ALPINE FAT CHN Semi Synthetic Fatliquoring Agent	Concentration(%) : 65±1 Ph : 7,0-8,0	Combination of synthetic and sulphonated natural oil . Alpine FAT CHN is an universal fatliquoring agent that designed for the lubrication of chrome and natural tanned leather. While it gives softness to leather, it does not cause color change. Alpine FAT CHN forms emulsions which penetrate the other natural or sulphated oil. It emulsifies up to 50 % of raw oils. Alpine FAT CHN imparts shine and velvety appearance when used in suede leathers
ALPINE FAT NFO Neatsfoot Oil	Concentration(%) : 100	Natural combination of neatsfoot oil. Alpine FAT NFO is used fatliquoring of chrome and natural tanned leather. By the selection of the raw materials used, may be obtained lighter and easily dispersible products. It provides smooth surface and softness
ALPINE FAT LN Lecithin Based Oil	Concentration(%) : 55±1 Ph : 6,0-8,0	Combination of natural and synthetic oil. Alpine FAT LN shows an optimum penetration and gives excellent softness to the skin as a feather. These features is provided with the use of highly Alpine FAT LN in fatliquoring combination. Alpine FAT LN are stable to hard water and electrolytes at normal concentrations. Alpine FAT LN can be easily combined with anionic and nonionic products
ALPINE SOFT TK Full Synthetic Fatliquoring Agent	Concentration(%) : 50±1 Ph : 6,0-7,0	Combination of synthetic, sulphonated ester based and non-oxidized fatliquoring agent. Alpine SOFT TK gives softness and lightness to leather. Although imparting softness to the skin, it provides waxy touch and smooth texture. When used clothing, shoe upper and upholstery leather production, it is obtained soft, bright and high light fastness leathers.
ALPINE SOFT WPL Special Waterproof Fatliquoring Agent	Concentration(%) : 40±1 Ph : 6,0-7,0	Mixture complex active emulsifier and synthetic oil. Alpine SOFT WPL gives excellent results especially leathers desired waterproofing. Apart from it can be used at all in chromed leather that desired softness easily. It may be used alone or combination with anionic and neutral oil. Even when used at low rates provides softness to skin and surface fatliquoring. Fixation should be done with chromium and aluminium salts for waterproof leather
ALPINE SOFT WPS Fatliquoring Agent providing Waterproof, Touch and Fullness	Concentration(%) : 40±1 Ph : 6,0-7,0	Mixture of hydrocarbons, silicones and emulsifiers. Alpine SOFT WPS provides excellent homogeneous waterproofing. When used for the shoe upper leather gives fullness and tight skin. Alpine SOFT WPS can be used with thin light weight leather It can be added to retanning bath directly. It may be added to main fatliquoring dissolving 1:3 ratio in 60 °C water before fixation. In order to obtain effective results neutralization pH should not exceed 5,0 and the section of the pH must be homogeneous. When added after fur-suede dyeing in new bath at 45 °C and 1,0-3,0 g/L, allows formation of good touch and writing effects on suede. Fixation should be done with chromium and aluminium salts for waterproof leather.
ALPINE SOFT GLH Full Synthetic Fatliquoring Agent	Concentration(%) : 50±1 Ph : 5,5-6,5	Mixture of surfactants and synthetic fatliquoring agent- Alpine SOFT GLH is used for fatliquoring all types of leather. Especially it is indispensable for fatliquoring combination of fur-suede and garment leathers production. It is obtained soft leather using Alpine SOFT GLH. It is recommended for use in fatliquoring combination of chrome tanned leather wet-blue garment, garment and fur-suede . It is used in main and after dyeing fatliquoring stages safely. When combined other fatliquors, it is compatible and acts as an emulsifier.
ALPINE SOFT SCP Sulfo Chlorinated Paraffin Based Fatliquoring Agent	Concentration(%) : 80±1 Ph : 6,0-8,0	Combination of sulfo chlorinated paraffin and surfactants. Alpine SOFT SCP is an universal fatliquoring agent designed for all leather types especially suede, fur suede and pig skins. Because of superior bonding with skin and a high penetration capability, it is used in deep dyeing and deep and dry fatliquoring effect. Alpine SOFT SCP is suitable for manufacturing light-colored skin because of non-oxidized structure. It gives good fastness of sanding and writing effect when used suede leather production
ALPINE SOFT TM Synthetic Fatliquoring Agent	Concentration(%) : 60±1 Ph : 8,0-9,0	Mixture of synthetic oil and emulsifier. Alpine SOFT TM imparts good softness without doing hardness on the skin. Leather which lubricated with Alpine SOFT TM even under prolonged storage conditions is perfectly resistant to yellowing. There is no fatty spew problem



PRODUCTS	MAIN CHARACTERISTICS	USE
ALPINE FAT SA Full Synthetic and Sulfated oil	Concentration(%) : 60 ± 1 Ph : 6,0-8,0	If used alone or in combination with other sulphited fatliquors, it is possible to obtain soft, light leathers with tight and fine grain. It increases penetration of oil when used sulphited and natural oil. It gives fine emulsion. It is provided excellent softness of the skin without changing the color of leather. It is used as an universal fatliquoring agent for cattle and sheep skins. Alpine FAT SA is a product that has excellent light fastness
ALPINE SOFT MOL Special Fatliquoring Agent	Concentration(%) : 89 ± 1 Ph : 6,0-7,0	Lecithin based combined fatliquoring agent .It can be used for all kinds of softy chrome leather and in the main fatliquoring. It improves colour depth in dyeing and gives good writing effect. It provides silky and softy touch, bright and shiny appearances
ALPINE FAT GT Sulphited Fatliquoring Agent	Concentration(%) : 60 ± 1 Ph : 6,0-8,0	Mixture of sulphited fish oil and surfactants. Alpine FAT GT is used for fatliquoring all types of leather.It has a good penetrating and softening power with good light fastness. It is an universal fatliquoring agent for chrome and vegetable tanned leathers. It can be used alone or in combination with other anionic fatliquors
ALPINE FAT SW Phosphoric Ester Based Oil	Concentration(%) : 60 ± 1 Ph : 6,0-7,0	Mixture of natural, sulfonated and synthetic oil. Alpine FAT SW is a soft oil that can be applied for garment, gloving and fur-suede leather particularly. It can be used alone or combination of all types anionic fatliquors and water-repellent agent. Alpine FAT SW imparts soft as a feather and natural look to the leather. It shows excellent penetration to bottom layer of leather and it shows a strong binding to the skin. Alpine FAT SW can be used with anionic oil such as Alpine FAT LN. It is not stable to cations such as chromium, aluminium and zirconium
ALPINE FAT WS Lanolin Based Sulphited Fatliquor	Concentration(%) : 50 ± 1 Ph : 6,0-8,0	Combination of lanolin and sulphited fish oil.Alpine FAT WS imparts to leather skin surface softness, fullness and waxy touch. It enhances brightness of vegetable tanned leather. Alpine FAT WS improves the writing effect of dark color suede leather and the depth of color and brightness
ALPINE FAT TIS Sulphited Fatliquoring Agent	Concentration(%) : 65 ± 1 Ph : 6,0-8,0	Combination of synthetic and natural sulphoesters.Alpine FAT TIS is an universal fatliquoring agent designed for chromed and natural tanned leatherbecause of penetration to inner layer of the skin. It imparts softness to the skin surface, deep coloring, uniform softness and brightness.
ALPINE FAT KM Fatliquoring Agent For All Types of Leather	Concentration(%) : 45 ± 1 Ph : 6,0-7,0	Mixture of natural, sulfonated and synthetic oils.Alpine FAT KM can be applied for all types of soft leathers as garments, gloves and fur suede leathers. It can be used alone or in combination with every other type of anionic fatliquor and with waterproofing agents. Alpine FAT KM shows excellent penetration and a strong binding to the leather fibers. It improves homogeneity of color of the skin. Leathers fatliquored with Alpine FAT KM have an excellent softness and show a light and fluffy character with a mellow touch.
ALPINE SOFT LKS Sulphited Fish Oil	Concentration(%) : 65 ± 1 Ph : 6,0-7,0	Alpine SOFT LKS can be used as a single fatliquor for furniture and car upholstery leathers. It can be used in second chrome tanning, neutralization and retannage.
ALPINE SOFT NVS Sulphited Vegetable Oil	Concentration(%) : 85 ± 1 Ph : 5,0-6,0	Combination of sulphited vegetable and natural oils.Alpine SOFT NVS provides on lubricated leather a balanced, homogeneous and good softness, pleasant feel and lightness. Alpine SOFT NVS can be used in second chrome, neutralization and retanning.It can be used alone or in combination with anionic oils. Its internal lubrication is strong



PRODUCTS	MAIN CHARACTERISTICS	USE
ALPINE SOFT OSD Sulphited Fish Oil	Concentration(%) : 81 ± 2 Ph : 6,0-7,0	Alpine SOFT OSD can be used as a single fatliquor for furniture and car upholstery leathers. - It can be used in second chrome tanning, neutralization and retannage.
ALPINE SOFT SB Sulphited Oil	Concentration(%) : 65 ± 1 Ph : 6,0-7,0	Combination of sulfite and synthetic oils. Alpine SOFT SB is soft due to its penetration into the inner layer of the leather for clothing and upholstery leathers on chrome and natural tanned leathers. It is a universal lubricant designed. Gives softness to the skin surface, very good paintability, smoothness and provides good light fastness. Resistant to electrolytes at normal concentrations.
ALPINE SOFT SWS Phosphoric Ester Based Oil	Concentration(%) : 63 ± 2 Ph : 5,0-7,0	Mixture of natural, sulfonated and synthetic oil. Alpine FAT SW is a soft oil that can be applied for garment, gloving and fur-suede leather particularly. It can be used alone or combination of all types anionic fatliquors and water-repellent agent. Alpine FAT SW imparts soft as a feather and natural look to the leather. It shows excellent penetration to bottom layer of leather and it shows a strong binding to the skin. . It is not stable to cations such as chromium, aluminium and zirconium
ALPINE SOFT TKS Full Synthetic Fatliquoring Agent	Concentration(%) : 49 ± 2 Ph : 6,0-7,0	Combination of synthetic, sulphonated ester based and non-oxidized fatliquoring agent. Alpine SOFT TK gives softness and lightness to leather. Although imparting softness to the skin, it provides waxy touch and smooth texture. When used clothing, shoe upper and upholstery leather production, it is obtained soft, bright and high light fastness leathers
ALPINE SULFOSOL ELS Sulphited Oil	Concentration(%) : 60 ± 1 Ph : 6,5-7,5	Combination of synthetic, sulfite and lecithin based oils. Alpine SULFOSOL ELS is used for lubricating all kinds of leather. Light fastness and penetration are good. Gives flat skin. Universal lubricating agent for chrome and vegetable tanned leathers. Can be used alone or in combination with anionic oils. It is recommended to use 2.0 – 10.0% depending on the softness.
ALPINE SULFOSOL E Sulphited Fish Oil	Concentration(%) : 60 ± 1 Ph : 6,0-7,0	Alpine SULFOSOL E can be used as a single fatliquor for furniture and car upholstery leathers. It can be used in second chrome tanning, neutralization and retanning.
ALPINE SULFOSOL C Sulphited Fish Oil	Concentration(%) : 80 ± 2 Ph : 6,0-7,0	Alpine SULFOSOL C can be used as a single fatliquor for furniture and car upholstery leathers. It can be used in chrome retanning, neutralization and retanning.
ALPINE SULFOSOL COMPACT FLS combined oil	Concentration(%) : 55 ± 2 Ph : 6,5-7,5	Combination of sulfite, lecithin and phosphate ester based oils. Alpine SULFOSOL COMPACT FLS is used for fatliquoring all kinds of leather. light fastness and penetration is good. It gives a nice touch and softness to the leather. A homogeneous fullness is achieved throughout the skin. Gives flat skin. Universal fatliquoring agent for chrome and vegetable tanned leathers. Can be used alone or in combination with anionic oils. It is recommended to use 2.0 – 10.0 % depending on the softness.
ALPINE SULFOSOL B Sulphite Vegetal Oil	Concentration(%) : 65 ± 1 Ph : 6,5-7,5	Mixture of sulphited vegetal and natural oils.- Alpine SULFOSOL B gives the leather a homogeneous and good softness, pleasant handle and lightness is achieved. In chrome retanning can be used in neutralization and retanning. Can be used alone or in combination with anionic oils. Strong inner softness.
ALPINE DERMASOFT CS Cationic Fatliquoring Agent	Characteristics : Modified fatty acids Concentration (%) : $21,0 \pm 1,0$ pH Value (10 % in water) : 4,0 - 5,0	Alpine DERMASOFT CS is used in the production of all types of leather especially split leather. It gives a soft and silky touch. It is also suitable as touch modifier in full grain leather. It helps to obtain a smooth and silky grain.



FARBEN
THE CHEMICAL PRODUCER



alpine

RETANNING AGENTS

RETANNING AGENTS



PRODUCTS	MAIN CHARACTERISTICS	USE
ALPINE RAL 450 Aluminium Based Retanning Agent	Al₂O₃ Content (%) : 21,0- 25,0 Ph : 3,0-5,0	Aluminium triformate. In the production of fur-suede stages of tanning and retanning it is particularly recommended. Improves sanding effect. Increasing brightness of and strength of dyes increases the capacity of dyeing. It is suitable for tanning of light color of leather. It can be used fixation of waterproof leather around pH 3,5.
ALPINE RAL 455 Aluminium Based Retanning Agent	Concentration(%) : 92 Ph : 3,0-4,0	Mixture of organic and inorganic products based on aluminum triformate. In combination with Alpine RAL 455 cationic retanning materials or other mineral tanning agents Can be used in combination. It is recommended to be used alone, especially in the production of white leather. Increases color brightness in the production of fur-suede, nubuck, velvet leathers. It is also particularly recommended for the fixation of anionic products used in retanning.
ALPINE RAL 490 Aluminium Based Retanning Agent	Concentration(%) : 86 Ph : 3,0-4,0	Aluminium salts based product.- Alpine RAL 490 use together with cationic retanning materials or other mineral tanning agents. As with all classic aluminum tanners, it provides water resistance to leathers. When used in the retanning stage of chromed leathers, tightness to the leather and good buffing properties.
ALPINE TARA SPECIAL Vegetal tanning agent	Concentration(%) : 52-58 Ph : 2,5-4,5	As a result of tanning done with Alpine TARA SPECIAL, light colored and high light fastness leathers are obtained. When used in combination with other vegetable tanning agents, it improves light fastness further and is obtained cleaner colors. When used in retanning chrome leather strength, fullness and pastel shades are obtained. With the natural acidity of Alpine TARA, it is provided spontaneously better fixation of tannins. Alpine TARA SPECIAL can be used for sole leather and also saddlery leather during the retanning and bleaching of vegetable tanned leather. It can be used with other retanning agent to improve the light fastness, in white vegetable tanning and the upper leather.
ALPINE MD Diciyandiamide Based Resin	Concentration(%) : 95 Ph : 10,0 - 11,0	Modified dicyandiamide resin.- Alpine MD is a special resin that provides fullness, softness and excellent resistance to cabinet in retanning of chrome leather. The most important feature of the product is penetration to the requested area to be filled in the weak leather. Alpine MD can be used in combination with syntans and vegetable tannins.
ALPINE RDC 325 Diciyandiamide Based Resin	Concentration(%) : 95 Ph : 10,0 - 11,0	Alpine RDC 325 is a special resin that provides fullness, softness and excellent resistance to cabinet in retanning of chrome leather. The most important feature of the product is penetration to the requested area to be filled in the weak leather. Alpine RDC 325 can be used in combination with syntans and vegetable tannins. It provides good sanding and dyeing properties
ALPINE RCA 460 Retanning agent	Al₂O₃ (%) : 14,0 ± 0,5 Cr₂O₃ (%) : 3,0 ± 0,5 pH Value (10 % in water) : 3,0 - 4,0	Aluminium-chrome tanning agent It is obtained nearly white leather when Alpine RCA 460 used alone for tanning. Yellowness in tanning that made using aluminium is not observed with this product. Alpine RCA 460 gives firmness to the skin, improves dyeing and helps. Because of this property is obtained well-suede and nappa. When used in fur tanning, without the formation of green color in feathers, colorless and clear colored suede is obtained
ALPINE SCS 400 Chrome syntan	Concentration (%) : 99,0 ± 1,0 Cr₂O₃ (%) : 11,5-13,0 pH Value (10 % in water) : 3,0 - 4,0	Alpine SCS 400 recommended for retanning is chrome-syntan complex in powder form. It provides high light fastness for matte colors. It is used in retanning processes. When used in tanning of sheepskins gives fullness and smooth skin. It increases breaking strength of skin in sanding and jumbo
ALPINE MX Melamine Based Resin	Concentration(%) : min 88 Ph : 6,5 - 7,5	Modified melamine formaldehyde resin.- Alpine MX is used to increase the firmness of chrome tanned leather. Also provides softness of the skin. Leather made retanning with Alpine MX has excellent fastness. Thus discoloration of the skin is much reduced. Before adding other retanning agents leather cabinet should be rotated for 30-45 min. It can be used alone or in combination with anionic retanning agents. The best results are obtained by the use of vegetable extracts and synthetic tannins
ALPINE RNS 420 Neutral Syntan for Chrome-Tanned Leather	Concentration (%) : 92 min. pH Value (10 % in water) : 9,0 - 10,0	Buffering salts of naphthalene sulphonic acids. Alpine RNS 420 is used in neutralization stages. It can be given to bath with other neutralizing product. It improves penetration of other product. It can be used alone or combined with other neutralizing product like sodium formate, sodium bicarbonate. It provides pH of section that is balanced. Homogeneous retanning, dyeing and fatliquoring effect is obtained.
ALPINE SPA 500 Paraaldehyde Retanning Agent	Concentration (%) : 99,0 ± 1,0 pH Value (10 % in water) : 10,0 - 12,0	Cyclic paraaldehyde. Alpine SPA-500 is used as pre-tanning, tanning and retanning agent for chrome and vegetable tanning. With using Alpine SPA-500 in pretanning or after chrome tanning, fullness and softness of leather increase. It improves penetration of the tanning agents in vegetable tanning and touch on surface. When Alpine SPA-500 used in chrome bath after penetration, increases the absorption of chrome creating simple chrome salts and it is obtained an excellent touch. This system is particularly suitable for bovine leather that is difficult to obtain fullness and writing effect. The other advantage of Alpine SPA-500 compared with conventional retanning agent gives better fullness and softness. Its fixation capacity and light fastness is better than the other aldehydes. It increases dyeing grade. When used in the production of fur-suede, fuller and light leathers are obtained. It does not yellowing on fur.

RETANNING AGENTS



PRODUCTS	MAIN CHARACTERISTICS	USE
ALPINE SPA 505 Paraaldehyde Retanning Agent	Concentration (%) : 45,0 ± 1,0 pH Value (10 % in water) : 4,5 - 5,5	Reactive polyaldehyde. Alpine SPA 505 can be used in pre-tanning and retanning processes of fur and leathers tanned with chrome and aluminium. Leathers processed with Alpine SPA 505 have thin, horizontal and tight grain structure. Soft and fuller leather are produced with the use of Alpine SPA 505. It is provided very good heat and light fastness of leather production. It is compatible with mineral, vegetable and synthetic tannins. Excellent white leather production is provided. It is compatible with dyes and fatliquors
ALPINE RPS 441 Retanning Agent	Concentration (%) : 98,0 ± 1,0 pH Value (10 % in water) : 6,5 - 7,5	Mixture of protein and polysaccharides- Alpine RPS 441 is retanning product. It provides homogeneous dyeing. It gives the writing effect on the leather. When used in suede type leather, it improves brightness of surface. It can be used for retanning each type of leather. It can be used for fur-suede processes in the tanning and retanning stages.
ALPINE SYNTAN 555 Synthetic Replacement Tannin	Concentration (%) : 94,0 min. pH Value (10 % in water) : 3,0- 4,5	Condensation products of phenols. In the retanning of the chrome leather ALPINE SYNTAN 555 supplies a very good fullness, a white colour and a good lightfastness. ALPINE SYNTAN 555 is highly indicated as a retanning agent for chrome leathers in order to obtain a neutral basic colour which is light and fast when exposed to light; in addition, the skins are full elastic and with a fine grain
ALPINE SYNTAN 550 Synthetic Replacement Tannin	Concentration (%) : 92,0 min. pH Value (10 % in water) : 4,5 - 5,5	Phenol-naphthalene sulphonic acid condensation product. Alpine Syntan 550 is used for retanning of chrome-tanned leather in many applications. It is recommended in the production of especially glazed and goat skin because of low firming effect. It can be used in combination with resins and vegetable tannins in retanning of corrected and printed leather. It increases the distribution of the vegetable extracts in leather. It is recommended in leather desired tight skin. Increases the depth of dyeing. Develops penetration of dye and provides distribution of dye.
ALPINE SYNTAN BWC Universal Replacement Syntan	Concentration (%) : min. 95,0 pH Value (10 % in water) : 2,5 - 3,5	Dihydroxy diphenil sulphone condensation product. Alpine SYNTAN BWC has high tanning power. It is suitable for retanning of chrome leather. It can be made the combination with vegetable tannins. It is ideal for the production of white skin. It has high light fastness
ALPINE RETADERM WW Synthetic Replacement Tannin	Concentration (%) : min. 95,0 pH Value (10 % in water) : 5,0 - 6,0	Phenol and dihydroxydiphenyl sulphonic condensation product.- High tanning power of Alpine RETADERM WW makes appropriate for retanning of each type leather chrome-tanned. Also it can be used in combination with vegetable extracts. Especially in the production of white leather that require high light fastness is recommended to use.
ALPINE RETADERM BC Synthetic Replacement Tannin	Concentration (%) : min. 96,0 pH Value (10 % in water) : 3,0 - 5,0	Dihydroxydiphenyl sulphonic condensation product.- Alpine RETADERM BC is suitable for retanning all types of leather tanned with chrome. When used in retanning chrome leather it gives good fullness, white color and very good light fastness. Alpine RETADERM BC has good tanning effect. It is recommended for white and pastel color leather. It provides excellent whitening effect to the leather, fine touch and robust surface.
ALPINE WHITE TANNING White Tanning Agent	Concentration (%) : 21,0 ± 1,0 pH Value (10 % in water) : 4,0 - 5,0	Phosphine-based tanning agent.- Alpine WHITE TANNING is a tanning agent used in wet white systems. While it gives fullness, tightness and smooth surface to leather, at the same time provides good dyeability properties. In leathers treated with Alpine WHITE TANNING, shrinkage temperature is over 80 °C. It is a very powerful natural oil distributor with its chemical structure and has fire retardant properties. Product penetrates to all kinds of leather easily and shows good distribution. Alpine WHITE TANNING is suitable for the production of automotive, upholstery, garment and sports shoes leather
ALPINE RETAN Z Tanning Agent	Characteristics : Zirconium sulfate based tanning agent Active Content (ZrO2) : 33,0 ± 1,0 pH Value (10 % in water) : 0,5 - 1,5	Alpine RETAN Z is zirconium sulfate based tanning agent and has good solubility in water. It is suitable for white tanning. Also it can be used in the production of chrome free tanning.



PRODUCTS	MAIN CHARACTERISTICS	USE
ALPINE DISPERSAF Dispergator for Fatliquors	Characteristics : Sulfate fatty alcohol based material Concentration (%) : $26,5 \pm 1,0$ pH Value (10 % in water) : 6,5 - 7,0	Alpine DISPERSAF that has softening properties is very effective dispersing and stabilizing material. Product can be applied in main fatliquoring, mineral tanning and during pickle process alone or mixing with other fatliquors that resistant to pickle. - With use of the product, it is obtained a better distribution of fatliquors and increasing softness. Thus, fatliquors displaying more efficient penetration and distribution imparts physical properties that increase the tear and tensile strength of the leather.
ALPINE CR 6 Auxiliary Substance Preventing Cr (+6) Formation in the Leather	Characteristics : Combination of organic and inorganic materials pH Value (1 % in water) : 2,5 – 3,5 Ionic Structure : Anionic	It is used in all types of chrome leather. Reduces the risk of Cr (+6) formation on the leather. After the fixation process in the leather process, in the last washing bath at 20 - 30 ° C, at 50 - 150% flote rates, Alpine CR-6 is used at rates 1.0 - 2.0% by shaved weight. The processing time should be between 30 and 60 minutes.
ALPINE ANTIFOAM PLUS Antifoaming Agent	Characteristics : Silicone-based defoamer Concentration (%) : $42,0 \pm 1,0$ pH Value : 6,0 - 8,0 Ionic Structure : Nonionic	It is extremely effective in the formulations of the foam forming surfactant used. In applications where the pH is critical, in a wide pH range (4-11) is used. During operation of the foam generated cuts as long term. It can be applied at all stages of leather processing. Alpine ANTIFOAM PLUS is not suitable for processes that contain alcohol and derivatives
ALPINE ANTISTATIKUM Antidusting Agent	Characteristics : Modified alkyl amino carboxamide Concentration (%) : $23,0 \pm 1,0$ pH Value (10 % in water) : 4,0 - 5,0	Alpine ANTISTATIKUM is an antistatic material that prevents dusting. - It is used in any type of leather.



FARBEN
THE CHEMICAL PRODUCER



alpine

DYEING AUXILARY



PRODUCTS	MAIN CHARACTERISTICS	USE
ALPINE DFX 501 Dyeing Fixator	Concentration (%) : $20,5 \pm 0,5$ pH Value (10 % in water) : 4,5 - 5,5	Modified cationic, formaldehyde free condensation product. Alpine DFX 501 is a fixator that prevents coming out dye in new bath after dyeing. It is used in any type of leather
ALPINE SNS 515 Dyeing Auxiliary	Characteristics : Dye and tannin dispergator based on naphthalene sulphonic acid Concentration (%) : $99,0 \pm 1,0$ pH Value (10 % in water) : 7,0 - 9,0	Alpine SNS 515 provides bright and homogeneous dyeing. It is used as an auxiliary in dyeing processes performed with anionic dyes. Alpine SNS 515 turns color less than its counterparts. It disperses vegetable tannins perfectly. Thus provides penetration easier
ALPINE PLUS SLN Dyeing Auxiliary	Characteristics : Dyes and tannins dispergator based on naphthalene sulphonic acid Concentration (%) : $99,0 \pm 1,0$ pH Value (10 % in water) : 5,0 - 6,0	Alpine PLUS SLN provides homogeneous dyeing. In dyeing processes carried out with anionic dyes is used as an auxiliary. Bright and uniform dyeing is obtained. Alpine PLUS SLN opens fewer colors than its counterparts. Disperses vegetable tannins perfectly. In this way, penetration makes easier.
ALPINE RETADERM DSA Synthetic Dispergator	Concentration (%) : $96,0 \pm 1,0$ pH Value (10 % in water) : 6,0 - 8,0	Naphthalene sulfonic acid-based dyes and tannins distributor- It is used for each type of chrome leather. It is used for the neutralization of chrome tanned leather. It provides vivid, bright and homogeneous dyeing. It does not have decolorization property. In dyeing processes carried out with anionic dyes is used as an auxiliary



www.farben.com.tr
www.herkimgroup.com

📍 Organize Deri Sanayi Bölgesi 19. Yol 12/6 Parsel Tuzla, İstanbul / Turkey

☎ 444 56 58